

**SEA&SEA**  
THE UNDERWATER IMAGING COMPANY

PRODUCT CATALOG  
2021



# A consistently leading manufacturer of underwater imaging gear for 50 years.



**SEA&SEA**  
THE UNDERWATER IMAGING COMPANY

## CONTENTS

<b>Strobes</b> .....	2
YS-D3 LIGHTNING .....	3
YS-01 SOLIS .....	4
YS-03 SOLIS .....	5
Strobe Accessories .....	6
水中写真と光 .....	7-8
<b>Housings</b> .....	9-10
CANON MDX-R5 .....	11-12
SONY MDXL-α7 IV .....	13-14
NIKON MDX-Z7 II /Z6 II .....	15
NIKON MDX-D850 .....	16
CANON MDX-R .....	17
MDX-5D Mark IV .....	18
<b>Housing Accessories</b>	
PORTS .....	19-20
Housing Accessories .....	21-23
<b>DX-6G</b> .....	24
<b>System Chart</b>	
for Canon MDX Housings .....	25-27
for Nikon MDX Housings .....	28-30
for Sony MDXL Housing .....	31-32
for Sony MDX Housing .....	33
for Olympus MDX Housing .....	34

### Special thanks

All images in this catalog have been provided by the Sea&Sea

Ambassadors below:

**Andrew Sallmon:** Cover, P9, P11, P13

**TY Saksit:** P1

**Mike Bartick:** P2, P5

**Stefan Beskow:** P3

**Patrik Jonson:** P4

**Tep Keerati:** P30

For further information on each Ambassador and links to their various Social Media sites and web pages that showcase some amazing underwater images, please visit [www.seaandsea.jp](http://www.seaandsea.jp)



Photo : Mike Bartick

SEA&SEA are a pioneering company and have been producing underwater strobes since 1972.

# Underwater Strobes

Strobes are an indispensable tool for underwater photography, helping to reproduce natural tones and hues where colors (especially red) are quickly lost on descent. Even the light emitted from your strobe will be absorbed underwater, so the strobe must be able to emit an intense beam. The light intensity must be variable though, to give just the right amount of light needed for perfect exposure. Also, strobes must spread the light across a wide beam angle, to cover the frame of the image evenly.

SEA&SEA were already producing electronic strobes when most underwater photographers still used flashbulbs as their underwater light source. This accumulated technological know-how goes into the design and production of the latest SEA&SEA range of underwater strobes.

SEA&SEA strobes continue to evolve as we apply the latest technological breakthroughs to strobe design. This gives owners of SEA&SEA strobes more versatile tools which they can use to shoot in completely new ways and so fully express themselves artistically.

This is why SEA&SEA gear has been used and loved by so many underwater photographers, over such a long timescale, from beginners through to professional underwater photographers.

## Icon Key for strobes



It corresponds to the 5-pin connectors of the Nikonos type.



Uses a fiber optic cable for connection between digital camera and strobe.



DS-TTL II automatic exposure is possible by connecting a digital camera in housing with the Fiber-optic Cable II -type.



DS-TTL automatic exposure is possible by connecting a digital camera in housing with the Fiber-optic Cable II -type.



With manual flash exposure control adjustment.



Confirming the TTL flash output.



Audible tone indicates flash readiness and TTL confirmation.



[Caution for Ni-MH battery] When Ni-MH batteries are used, please follow these instructions. Failure to do so could result in battery leakage or/and battery explosion.

\*Insert the batteries with the polarity shown in the battery compartment .  
\*Remove batteries immediately after use.

\*For compatible cameras, please refer to "Compatibility List" for the strobe and digital cameras on the SEA&SEA website.



**Controlled lighting. High precision circuitry enabling the D-3 to fire at any moment.**  
**The new "YS-D3 LIGHTNING" is equipped with a maximum Guide Number of GN33 and maximum beam angle of 120°.**  
**The two-stage recycle time function provides priority shutter availability.**

Photo : Stefan Beskow

**NEW**

Underwater TTL Strobe

# YS-D3 LIGHTNING

Black/Silver [03123]

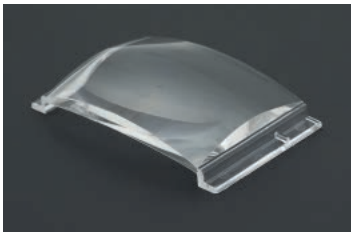
[Accessories] Ball Mount Strobe Adaptor, Diffuser 100, Diffuser 120

N	OPT	DS-TTLII	Target Light	Manual	TTL Lamp	Beep	Guide Number :33	Beam angle 80° x80°	2 Year Warranty
---	-----	----------	--------------	--------	----------	------	------------------	---------------------	-----------------

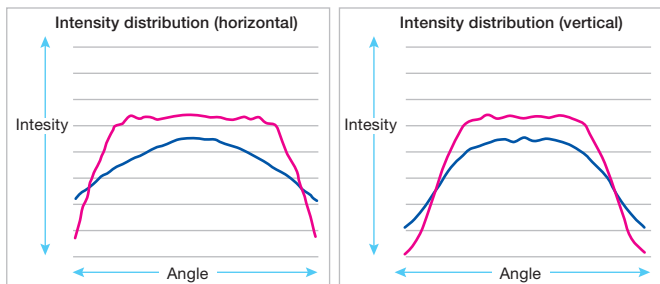
\* When the YS-D3 is used with a camera with built-in flash in housing, use the Fiber-Optic Cable.  
 \* Use of genuine SEA&SEA Fiber-Optic Cables is recommended. SEA&SEA strobes may not function properly if a third-party Fiber-Optic Cables are used (functions such as TTL auto exposure in particular).

## High-performance strobe

The latest D3 circuitry and light-emitting strobe produces a powerful guide number of 33. A newly developed high precision aspherical optical troidal lens has been fitted over the two flash tubes to disperse an even light from the center to the edge. The strobe's beam angle will increase to 100° or 120° by attaching standard diffuser accessories. When the optional Dome diffuser is attached, beam angle will increase to 150°.



Aspherical troidal lens is located in front of the flash tube.



Comparison of flash dispersion area, with and without aspherical optical troidal lens. (simulated.)

Without optical lens

With optical lens

## Superior consecutive firing capability to capture those critical moments

The YS-D3 utilizes larger capacity condensers compared with those used on competing strobes. In addition, the D3 is also equipped with a newly designed charging circuit. As a result, the YS-D3 will fire at GN16 continuously without any interval time. Even when the strobe is fired at GN22, the strobe will fire again within a mere 0.6 seconds. When the YS-D3 is fired at Guide Number over 22, a two-stage ready-to-fire signals will be issued. For instance, after the strobe fires at full power of GN33, the strobe will inform you both visually and audibly when the condenser is charged to fire at GN22. Then, when the condenser is charged enough to fire at GN33, another different signal will be issued. This design allows you to release more shutters in scenes where you want to shoot as many pictures as possible, maximizing shooting intervals between scenes.

## Backlight panel provides excellent visibility of control knobs and settings, especially when shooting in a dark environment.



▲ In DS-TTLII mode    ▲ (With pre-flash) In manual flash mode    ▲ (No pre-flash) In manual flash mode    ▲ In slave TTL mode



Photo : Patrik Jonson

Underwater TTL Strobe

# YS-01 SOLIS

Black 03124



[Accessories] Fixing bolt, Diffuser

OPT	DS-TTL II	Target Light	Manual	TTL Lamp	Guide Number :20	Beam angle 100° x 100°
-----	-----------	--------------	--------	----------	------------------	------------------------

- \* A Fiber-Optic Cable will also be required when using the YS-01.
- \* When the YS-01 is used with a non-SEA&SEA housing, a Strobe Mask Set (#50109) may be required along with the Fiber-Optic Cable.
- \* Use of genuine SEA&SEA Fiber-Optic Cables is recommended. SEA&SEA strobes may not function properly if third-party Fiber-Optic Cables are used (functions such as TTL autoexposure in particular).

## The YS-01, the best-selling strobe in its class has been redesigned, boasting improved performance.



### Everyone can now control light intensity as desired.

The target light has been upgraded to provide a more powerful beam to enable more controlled photography.

### Comes with diffuser as standard



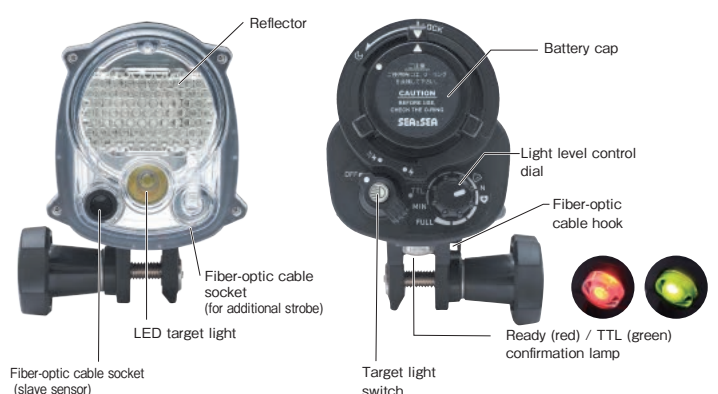
The half-translucent section diffuses and softens the light from the strobe. Using the diffuser gives softer, more evenly exposed images. The diffuser will also help reduce effects of overexposed images or when strong light produces shade/shadow in the image.

With a guide number of 20 and beam angle at 100°x 100° this strobe provides enough light for wide-angle photography without a diffuser.

Specially designed prism lens efficiently diffuses flash providing even light from the center to the edge.

Equipped with the DS-TTL II the same TTL circuitry as higher grade models.

The improved TTL system allows you to adjust intensity of light by 1/3 EV.





Underwater TTL Strobe

# YS-03 SOLIS

Black 03125

**NEW**

**OPT** **TTL** Lamp  
**Guide Number :20** **Beam angle 100° X100°**

[Accessories] Fixing bolt, Diffuser

**Easy to use, providing the best results as a very affordable strobe.**



The strobe has been designed for underwater photographers who need a basic manual strobe with simple operation. Turning the Power switch to TTL allows the user to take first class pictures in a simple fashion.

The strobe's light intensity and TTL accuracy are the same as the YS-01, offering no compromise in performance.



### Comes with diffuser as standard

The half-translucent section diffuses and softens the light from the strobe. Using the diffuser gives softer, more evenly exposed images. The diffuser will also help reduce effects of overexposed images or when strong light produces shade/shadow in the image.



### YS-03 UNIVERSAL LIGHTING SYSTEM 03126

A great value strobe package which includes everything you need to combine the YS-03 with most compact camera /housing combo's.

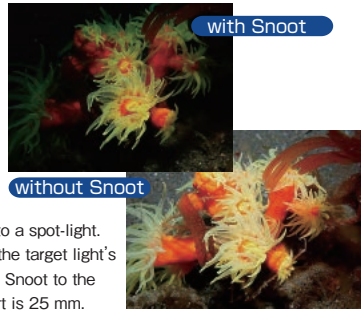
Package includes;  
 YS-03 Strobe,  
 Flexible Grip 280 X & Single Tray X,  
 Fiber-Optic Cable II M/2 Connectors.



## Strobe Accessories



**Snoot** [50115]  
An adapter to convert the strobes LED light into a spot-light. The Snoot utilizes an internal prism to ensure the target light's beam is guided directly down the center of the Snoot to the intended object. The diameter of the Snoot port is 25 mm.



**Dome diffuser** [28116]  
The dome diffuser will increase the beam angle to 150° x 170°, and will also allow shooting with soft light, when required. The guide number is reduced by -1.5EV.

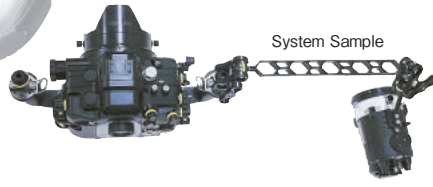


**Flash prism** [50127]  
The Flash Prism, when connected to the D3, enables shooting without using fiber optic cables up to 2 meters. (Only manual flash is supported)



**Diagonal Ball Base** [28117]

Diagonal Ball Base: A ball base that is angled at 35° compared to the regular ball base. The light emitting area of a strobe can be easily lowered backward, making it suitable for shooting when using a large dome port. Also, when a Sync Cord is attached, it prevents the cord from interfering with the ball clamp. Only compatible with YS-D3.



**Strobe YS Base** [28114]



**YS-D3 Strobe Cover** [51291]  
A cover with outside surface made of fine mesh skin neoprene, while back side is a more robust neoprene.



For Sony [50145]

For Canon Nikon [50144]

**Manual flash trigger**  
Device which converts camera's firing signal to a light signal. Equipped with remaining battery indicator.



**Diffuser for YS-01 SOLIS, YS-03 SOLIS, YS-01/02/03** (Standard accessory) [28109]

Diffuser100 for YS-D1/D2J(Standard accessory) [28111]

Diffuser120 for YS-D1/D2J(Standard accessory) [28112]



**Diffuser100 for YS-D3 LIGHTNING** (Standard accessory) [28118]

**Spare O-ring Set for YS-D3 LIGHTNING, YS-01 SOLIS, YS-03 SOLIS, YS-D2, YS-01/02/03** [10580]



**5-pin Sync Cord/N** [17100]



**5-pin Dual Sync Cord/N** [03470]

**Strobe Mask Set** [50109]

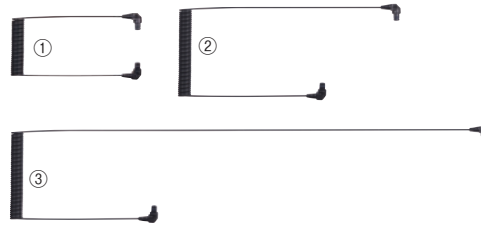
Stick the Velcro tape to the underwater housing covering the camera's built-in flash. Connect the Fiber-Optic Cable.



### Fiber-Optic Cable II (Option)

The best quality Fiber-Optic Cable is composed of 613 fibers (cores). Even when the cable is bent, attenuation of light is minimal. Therefore, the light signal will be transmitted to a strobe without loss. Compared with single fiber cables, the Fiber-Optic Cable II is more resistant to distortion, bending and physical impact.

[Construction]Methacrylic Resin  
[Fiber Diameter]1.5mm / 0.059 inch  
[Cable Diameter]2.7mm / 0.105 inch



- ①Fiber-Optic Cable II S/2 Connectors [50135] [Length]310mm / 12.2 inches
- ②Fiber-Optic Cable II M/2 Connectors [50128] [Length]453mm / 17.8 inches
- ③Fiber-Optic Cable II L/2 Connectors [50133] [Length]725mm / 28.5 inches
- Spare O-ring Set (6x O-Ring Pack) [92974]

## Specifications

Specifications for these products are subject to change without notice.

Item	YS-D3 LIGHTNING	YS-01 SOLIS	YS-03 SOLIS
Guide Number(SO100/m,land)	33, 24 (with Diffuser attached)	20	20
Beam Angle	80°x105°, 100°x110°(with diffuser)	100°x100°(with diffuser 110°x110°)	100°x100°(with diffuser 110°x110°)
Batteries	Only use x4 AA batteries of the same type and make (1.5V Alkaline or 1.2V Nickel-Metal Hydride).	Only use x4 AA batteries of the same type and make (1.5V Alkaline or 1.2V Nickel-Metal Hydride).	Only use x4 AA batteries of the same type and make (1.5V Alkaline or 1.2V Nickel-Metal Hydride).
Number of Flashes*1	AA Alkaline batteries: 150 / Nickel-Metal Hydride batteries: 200	AA Alkaline batteries: 230 / Nickel-Metal Hydride batteries: 330	AA Alkaline batteries: 230 / Nickel-Metal Hydride batteries: 330
Recycle time (full)*2	AA Alkaline batteries: 3.0 sec / Nickel-Metal Hydride batteries: 1.5 sec	AA Alkaline batteries: 2.5 sec / Nickel-Metal Hydride batteries: 1.9 sec	AA Alkaline batteries: 3.1 sec / Nickel-Metal Hydride batteries: 2.5 sec
Color temperature	5,600K	5,600K	5,600K
Color temperature w/diffuser	5,250K	5,250K	5,250K
Depth rating	100m / 330ft	75m / 250ft	75m / 250ft
Dimensions(WxHxD)	92x111x147mm / 3.6 x 4.4 x 5.6 inches (excluding Ball Mount)	68x108x129mm / 2.7x4.3x5.2inches	68x108x129mm / 2.7x4.3x5.2inches
Weight	610g / 21.2oz (w/o batteries, excluding Ball Mount)	450g / 15.8oz (w/o batteries)* Fixing bolt fitted	430g / 15.0oz (w/o batteries)* Fixing bolt fitted
Underwater weight*3	Approx. -20g / -0.7oz (incl. batteries)	Approx. +10g / 0.4oz(w/ batteries)	Approx. +10g / 0.4oz(w/ batteries)
Others	<input type="checkbox"/> Exposure control: DS-TTL II, Slave TTL, Light level control dial (GN): 1 / 1.4 / 2 / 2.8 / 4 / 5.6 / 8 / 11 / 16 / 22 / 33 (11 steps) <input type="checkbox"/> Pre-flash control: Equipped with pre-flash cancel mode <input type="checkbox"/> DS-TTL II function <input type="checkbox"/> Slave function <input type="checkbox"/> Auto power OFF function <input type="checkbox"/> Sync cord: 5-pin Sync cord/N, Fiber-Optic Cable <input type="checkbox"/> Over-pressure relief valve <input type="checkbox"/> LED target light (output is adjustable in 2 steps) <input type="checkbox"/> Audible charge signal	<input type="checkbox"/> Exposure control: DS-TTL II, Light level control dial (GN): 1/1.4/2/2.8/4/5.6/8/11/16/20 (10 steps) <input type="checkbox"/> Pre-flash control: Equipped with pre-flash cancel mode <input type="checkbox"/> DS-TTLII function <input type="checkbox"/> Slave function <input type="checkbox"/> Auto power OFF function <input type="checkbox"/> Sync cord : Fiber-optic cable <input type="checkbox"/> Over-pressure relief valve <input type="checkbox"/> LED target light	<input type="checkbox"/> Exposure control:Slave TTL <input type="checkbox"/> Slave function <input type="checkbox"/> Auto power OFF function <input type="checkbox"/> Sync cord : Fiber-optic cable <input type="checkbox"/> Over-pressure relief valve

\*1 Number of flashes and recycle time depends on the battery brand, temperature and frequency of use.

\*2 Number of flashes and recycle time of Ni-MH batteries were tested on 2400 mAh batteries.

\*3 As a standard, underwater weight measurements are taken in fresh water. (+) indicates the strobe is positively buoyant and floats in water.

(-) indicates the strobe is negatively buoyant and sinks in water. Weight in sea water will vary depending on salinity.

\* All specifications above are based on SEA&SEA's testing standards. Refer to the "Compatibility List" on SEA&SEA's website for compatibility between the strobe and specific cameras.



Do not use non-recommended batteries (such as lithium primary batteries). Use of non-recommended batteries may cause battery leakage and overheating and may cause the strobe to rupture, which could result in personal injury.

# Benefits of Using Strobes vs. Constant Video Lights

## ■ Differences between strobes and video lights: Light Intensity

▼ The images below were taken under the same conditions (shutter speed: 1/90, aperture F4) using SEA&SEA Strobe and a 30,000 lumen video light at full power.

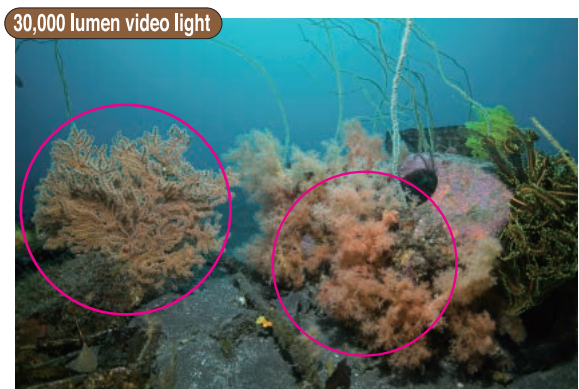
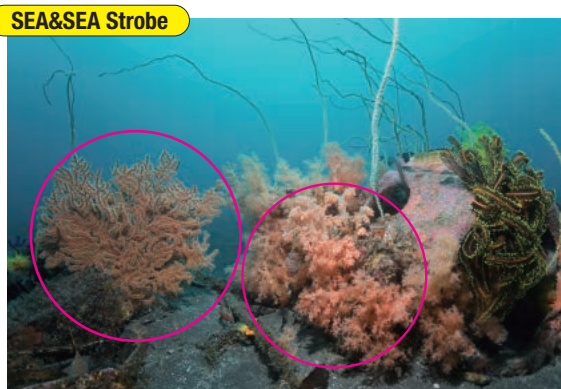


Light intensity is measured as a Guide Number for strobes but as a lumen value for video lights. Because these units of measurement are different, it is difficult to compare which is more powerful. When the measurements are converted however, the YS-D2 gives an equivalence of 509,600 lumens which makes it easy to understand that even a 30,000 lumen video light cannot illuminate the scene like a strobe can.

Also; strobes deliver their high intensity flash for an extremely short period of time which supports using faster shutter speeds. Using faster shutter speeds with a video light means less light can reach the camera's image sensor.

## ■ Differences between strobes and video lights: Colour-Rendering Properties

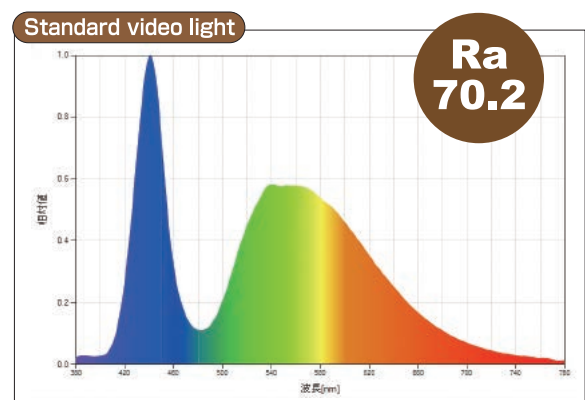
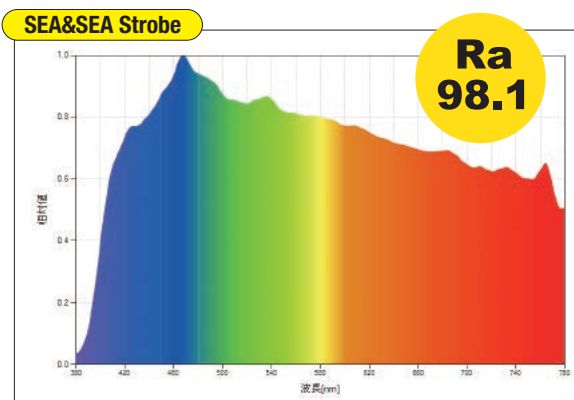
▼ The images below were taken to have the same brightness (Identical camera settings).



Strobes fire by releasing high voltage electricity across an arc (or xenon) tube. The light produced by a xenon tube is very similar to natural sunlight which means strobes have more natural and superior colour-rendering properties.

Rendering Index Average (Ra) is the quantitative measure of the ability of a light source to reproduce colours faithfully and naturally. The strobes Ra is similar to 100 (the highest Ra value) whereas a standard LED video lights Ra value is around 70. As a result, warm colours such as red are not reproduced faithfully and naturally by video lights.

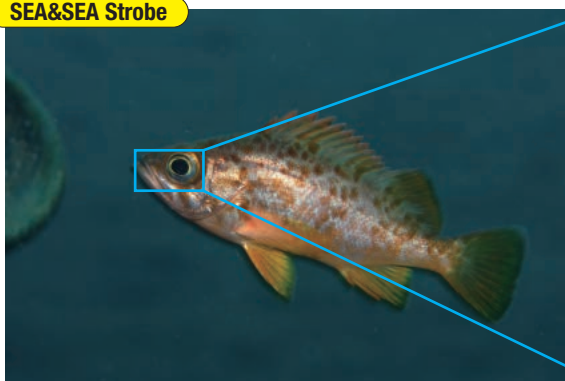
▼ Strobe light vs. Video light: Spectrum Comparison.



## ■ Strobe light ‘freezes’ moving subjects.

▼The images below were taken at a 1/10 sec. shutter speed.

SEA&SEA Strobe



Standard video light



**Strobe Flash Duration:**  
Only subjects illuminated by the strobe are recorded.

**Ambient/Constant Video Lighting:**  
Subjects hardly illuminated as there is not enough light.

The strobes flash duration is between 0.0001 to 0.04 sec. (1/10000 to 1/250 sec.) Therefore, even at slow shutter speeds, when strobe lighting is stronger than ambient light, moving subjects are ‘frozen’. Video lights do not freeze moving subjects as they are not powerful enough to allow the use of fast shutter speeds.



## ■ Strobes with TTL automatic exposure are easy to use.



YS-D3 LIGHTNING



YS-01 SOLIS



YS-03 SOLIS

Strobes are the best means of taking beautiful underwater photos because of the automatic exposure system known as TTL (Through-The-Lens). TTL automatically gives you just the right amount of light for correct exposure and all the images on the front page of this brochure were taken with SEA&SEA strobes in TTL Mode.

All SEA&SEA strobes are easy to use with minimal controls. By simply setting the mode dial to the TTL or DS-TTL position (as shown above), the strobes calculate the right amount of light needed. Subtle adjustment is also possible using either the cameras' or the strobes' exposure compensation function.

### Tips

- Set the cameras built-in flash to ‘forced flash’ mode.
- Set the cameras ISO sensitivity between 100 and 400.

# U/W Camera Housings

SEA&SEA housings are proudly made in Japan from machined marine-grade solid-block aluminium alloy to provide rigorous protection for your camera and provide easy operation in tough conditions.



DSLR and Compact System Cameras produce beautiful images and they can produce beautiful underwater images too! Although underwater housings can be cumbersome and difficult to handle, this is the only way to take your camera underwater, so using them is well worth the effort. SEA&SEA housings are ergonomically designed and built to make using them a breeze so this helps you to get the best images possible. SEA&SEA housings and strobes are used world-wide by a great many underwater image-makers.

## Icon Key for Housings



### Optical YS Converter

The Optical YS Converter converts the camera's hot-shoe TTL signal into an LED light signal. Both TTL and manual strobe photography are possible using a Fiber-Optic Cable II\*.

\* Fiber-Optic Cable II is required when using the Optical YS Converter.

**Compatible with**  
Optical YS Converter/N

Compatible with new Optical YS Converter/N1 for MDX housing [\[50126\]](#)

**Compatible with**  
Optical YS Converter/C

Compatible with new Optical YS Converter/C2 for MDX housing [\[50142\]](#)  
Compatible with new Optical YS Converter/CR for MDX housing [\[50143\]](#)

**Compatible with**  
Optical YS Converter/S

Compatible with new Optical YS Converter/S1 for MDX housing [\[50139\]](#)

### Manual flash trigger (MFT)

Device which converts camera's firing signal to a light signal. Equipped with remaining battery indicator.

**Compatible with**  
MFT S

For Sony  
[\[50145\]](#)

**Compatible with**  
MFT C/N

For Canon / Nikon  
[\[50144\]](#)



\* Housings that are compatible with an optical converter will also support a MFT.



**Luminescent**  
Stickers

Housing controls (levers and buttons) will glow in dark conditions.



**Built-in**  
Leak sensor

Housing equipped with a built-in leak sensor as standard. The sensor immediately alerts you to any water ingress.



**Sacrificial**  
Zinc Anode

Housing equipped with two sacrificial zinc anodes as standard (one on the front case and one on the rear) to avoid electrolysis damage.



**Compatible with**  
Leak sentinel

Housing compatible with (optional) Leak Sentinel. The pump creates a vacuum inside the housing and the sensor detects any leaks then lights up let you know if it is safe to dive or not.

[\[46128\]](#)



VF180

VF180 1.2x

[\[46112\]](#)



VF45

VF45 1.2x

[\[46111\]](#)

**Compatible with**  
VF180 /VF45

Either (optional) Viewfinder VF180 or VF45 can be mounted. These viewfinders cover the entire field of view and magnify the scene by 1.2x.



**Compatible with**  
Optical Viewfinder 0.5X [\[46108\]](#)

Reduces vignetting in the viewfinder's image. Recommended for wide-angle photography or other situations when it is essential to check

the overall composition of the picture. Depending on the situation, the viewfinder can be replaced with a standard pick-up viewfinder.



Photo : Andrew Sallmon



Revised ergonomic design, improved safety features and eye-catching exterior. The new MDX-R5 housings are now upgraded with more standard features to ensure better handling and greater protection for your camera.

U/W housing for Canon EOS R5

# MDX-R5 NEW

Black /Housing only [06198] Spare O-ring [62121]

[Dimensions (WxHxD)] 345 x 173 x 164 mm 13.5 x 6.8 x 6.4 Inches  
 [Weight] Approx.2900 gm/102.3 Oz (Including Grips). Depth Rating 100M/330 ft  
 [Construction] Corrosion-resistant aluminum alloy (machined, anodized finish)

Compatible with Optical YS Converter/R	Compatible with MFT C/N	Built-in Leak sensor	24mm HDMI 2 cable Ready Bulkhead	RF and EF lens Ready
Built-in Optical Viewfinder 0.5X	Leak Sentinel Factory Fitted Option	Compatible with VF180 /VF4Control Buttons	Luminescent Buttons	Built-in Griup Plus

The new MDX R5 is the perfect complement to Canon's new mirrorless R5 camera. The MDX-R5 is rich in features with all controls ergonomically designed to maximize camera operation. All major camera functions can be accessed from the grip handles through thumb or finger movement without releasing your grip.

## Identification of Parts



- |                            |   |                             |
|----------------------------|---|-----------------------------|
| 1 Accessory shoe           | 10 Extension connector moun (t M24)                 | 27 Quick control dial 2     |
| 2 Fiber-optic cable socket | 11 Lens release button                              | 28 AF start lever           |
| 3 Port for Strobe          | 12 Focus/Zoom dial                                  | 29 AF point selection lever |
| 4 Main dial                | 13 Under guard                                      | 30 Zoom in button           |
| 5 Shutter lever            | 14 Info button                                      | 31 Quick Control button     |
| 6 Locking latch            | 15 Menu button                                      | 32 Info button              |
| 7 Hand grip                | 16 Power switch                                     | 33 Setting button           |
| 8 Lanyard hook             | 17 Main switch for Optical YS Converter             | 34 Playback button          |
| 9 Port lock lever          | 18 Finder   |                             |
|                            | 19 Leak sensor LED lamp                             |                             |
|                            | 20 LCD panel info switching/<br>Illumination button |                             |
|                            | 21 MODE button                                      |                             |
|                            | 22 Multi-function lock button                       |                             |
|                            | 23 AE lock button                                   |                             |
|                            | 24 Cross buttons                                    |                             |
|                            | 25 Quick control dial 1                             |                             |
|                            | 26 Erase button                                     |                             |



The housing provides sufficient room to easily accommodate the latest larger diameter lenses.



24mm bulkhead allows connection of 3rd party HDMI 2 cable for attaching an external video monitor.



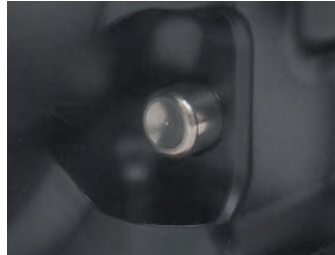
Designed for RF and EF mount lenses. The Focus/Zoom dial has two gears for operating either RF or EF lens zoom and focus functions.



Designed with an under-guard to minimize scratches and abrasions.



The Port Lock lever prevents the port from turning or loosening and is ideally located to avoid accidental unlocking.



The housing is equipped with a lens-lock release button which makes it possible to change lenses easily, without opening the housing.



Optional Sync Cord 2-pin Connector enables use of conventional hardwired Sync cable. (Manual mode only)



All controls have luminescence stickers which glow in a dark environment.

**Most controls can be operated whilst holding the grips.**



Frequently-used buttons such as ISO, AF-ON, Start/Stop and AF Point Selection are operated by external levers. This allows you to access controls with your right hand whilst holding the hand-grip.



The Optical YS Converter converts the camera's hot-shoe TTL signal into an LED light signal. Both TTL and manual strobe photography are possible using a Fiber-Optic Cable II \*. YS-D3Lightning, YS-D2J, YS-D2, YS-D1



**System Sample**

- MDX-R5 HOUSING     Optical Dome Port II 100L
- YS-D3 Lightning
- Fiber-Optic Cable II S/2 Connectors x 2
- SA8 (SA8 Double Ball Arm M x 4 / SA8 Ball Clamp x 6 / SA8 Fixed Ball Base x 2)
- Optical YS Converter



The housing will also accommodate the Sea&Sea Manual Flash Trigger.



Photo : Andrew Sallmon



Revised ergonomic design, improved safety features and eye-catching exterior. The new MDX-L series housings are now upgraded with more standard features to ensure better handling and greater protection for your camera.

U/W Housing for SONY α7RIV

# MDXL-α7IV

Black /Housing only [06195] Spare O-ring [62147]

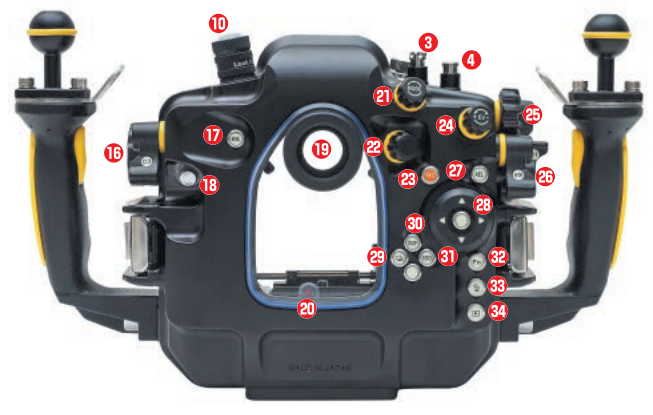
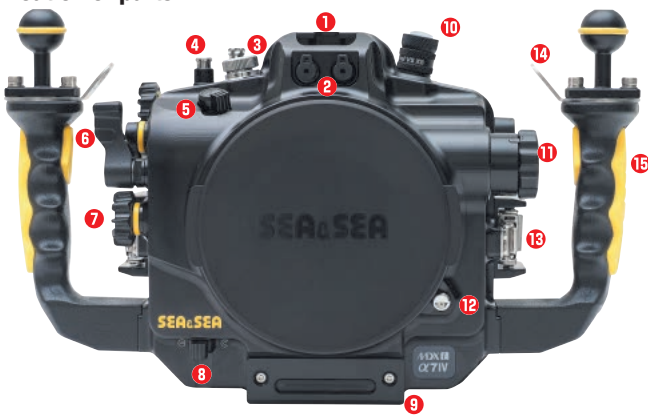
[Dimensions (WxHxD)] 330x189x131mm / 12.9x7.4x5.2 inches  
 [Weight] Approx. 2,800g / 6.17 lbs. ((housing only)  
 [Depth rating] 100m / 330ft  
 [Construction] Corrosion-resistant aluminum alloy (machined, anodized finish)

- |   |   |                              |                        |                       |
|---|---|------------------------------|------------------------|-----------------------|
| Compatible with Optical YS Converter/S1 | Luminescent Stickers                    | Built-in Leak sensor         | Sacrificial Zinc Anode | Compatible with MFT S |
| Compatible with Leak sentinel           | Compatible with Optical Viewfinder 0.5X | Compatible with VF180 /VF45* | Built-in Grip Plus     |                       |

\*Some vignetting occurs. When the VF180 1.2x is mounted on housing, the upper part of the camera's viewfinder cannot be viewed due to vignetting.

TTL shooting capability plus mobile Buoyancy Pocket for accessories such as Battery Chargers. Comfortably manipulate the next generation mirrorless camera and make the ultimate underwater image yours. Housing for the Sony mirrorless α7 IV.

## Identification of parts



- |  |                        |   |                                     |                           |
|--|------------------------|---|-------------------------------------|---------------------------|
| 1 Accessory shoe                         | 8 Port lock lever      | 15 Hand grip                            | 21 Mode dial                        | 28 Multi selector button  |
| 2 Fiber-optic cable socket               | 9 Under guard          | 16 C3 lever                             | 22 Diopter adjustment contorol dial | 29 Display setting button |
| 3 Connector hole                         | 10 Leak Centinel       | 17 Menu button                          | 23 Movie button                     | 30 Drive mode button      |
| 4 Exposure compensation dial lock button | 11 Focus / Zoom dial   | 18 Main switch for Optical YS Converter | 24 Exposure compensation dial       | 31 ISO button             |
| 5 Power switch                           | 12 Lens release button | 19 Finder                               | 25 Rear dial                        | 32 Fn button              |
| 6 Shutter lever                          | 13 Locking latch       | 20 Leak sensor LED lamp                 | 26 AF-ON lever                      | 33 Delete button          |
| 7 Front dial                             | 14 Lanyard hook        |   | 27 AEL button                       | 34 Playback button        |

**Revised ergonomic design, improved safety features and eye-catching exterior.**  
**The new MDX-L series housings are now upgraded with more standard features to ensure better handling and greater protection for your camera.**



**Compatible with all the DX (NX) ports series.**  
 Larger diameter lenses can be easily removed through the increased housing port diameter to enable battery exchange in camera body without removing lens.

**With Buoyancy Pocket \*1, underwater weight has lessened by 250g/8.8oz \*2.**  
**The pocket can be used as space for extra battery pack \*3.**

\*1 Dimensions: 100x63x24mm/3.9x2.5x0.9 inches.  
 \*2 Compared with the MDX-D5 Mark IV, 250g/8.8oz lighter under the following condition:  
 MDX-a7IV + SEL90M28 + Focus Gear + DX Macro Port 87 (underwater weight: 700g/24.7oz).  
 \*3 SEA&SEA will not take any responsibility for accident caused by use of extra battery or any other accessory stored in the Buoyancy pocket.



**Compatible with optical converter S1**  
 Compatible with Sea&Sea "optical converter S1" which converts the strobe light emission signal of the camera to LED light and synchronizes with the Sea&Sea YS strobe. It is a high-performance converter that does not just emit simple light-emitting signals like other companies, but also performs TTL auto light control.



**Most controls can be operated whilst holding the grips.**  
 Frequently-used buttons such as Front dial, Rear dial, C1 lever, C2 lever and AF-ON lever are operated whilst holding the grips.



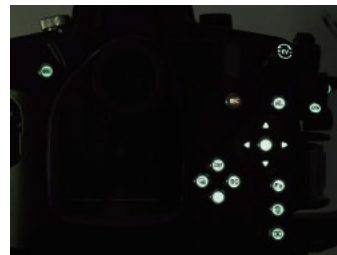
The camera's diopter adjustment dial can be operated from outside the housing. This feature is useful when two or more people with different eyesight use the housing.



Leak Sentinel, which measures atmospheric pressure inside the housing even on land. Two alert sensors are available for your peace of mind.



The camera can be set in the housing with the rear LCD positioned back from the camera, reducing distance to the housing's rear window and improving LCD visibility.



All controls have luminescence stickers which glow in a dark environment.



Sync Cord 2-pin Connector enables use of conventional hardwired Sync cable (Manual mode only).



Equipped with an under-guard to minimize scratches and abrasion.



The Port Lock prevents the port from turning or loosening and the Port Lock lever is specifically located to avoid being unlocked accidentally.



Equipped with new silicone handle inserts for firm and steady grip as standard. Silicone compound material implanted in the grip providing firm hold.

**Manual Flash Trigger S**

Compatible with the Sea&Sea, "Manual Flash Trigger" (optional).

[50145]



**Upgraded Z 7/6II supports TTL shooting with an optical converter.  
High-performance housing with excellent ergonomically designed controls for ease of shooting**



U/W Housing for Nikon Z7 / Z6 / Z7II / Z6II

**MDX-Z7II** **NEW**

Black /Housing only [06201] Spare O-ring [62121]

[Dimensions (WxHxD)] 339 x 169 x 158 mm 13.3 x 6.6 x 6.2 Inches  
[Weight] Approx.2700 gm/5.95 lbs. (Including Grips). Depth Rating 100M/330 ft  
[Construction] Corrosion-resistant aluminum alloy (machined, anodized finish)

- |  |  |                                     |                           |                            |
|--|--|-------------------------------------|---------------------------|----------------------------|
| Compatible with<br>Optical YS Converter/N1*1 | Luminescent<br>Stickers                    | Built-in<br>Leak sensor             | Sacrificial<br>Zinc Anode | Compatible with<br>MFT C/N |
| Compatible with<br>Leak sentinel             | Compatible with<br>Optical Viewfinder 0.5X | Compatible with<br>VF180*2 / VF45*3 | Built-in<br>Grip Plus     |                            |

\* 1 Serial No. 124000274 or later supported.  
\* 2 When using the VF180, the lower part of the image in the viewfinder is obscured.  
\* 3 The corners of the viewfinder will be obscured.

The MDX-Z7 II is a compact housing, taking advantage of the characteristics of a compact and lightweight Z 7/6 II. Compared to MDX-D850, it is about 100g lighter. Housing also compatible with Z7 / Z6 by rearranging some internal parts.



The Optical YS Converter converts the camera's hot-shoe TTL signal into an LED light signal. Both TTL and manual strobe photography are possible using a Fiber-Optic Cable II\*, -D3Lightning, YS-D2J, YS-D2, YS-D1



Housing features both focus and zoom dial gear for use with Z mount lenses.



The window for viewing the display panel on the top of the camera has been improved to increase brightness and visibility.



Able to disengage the gears when using a large diameter lens. Both Focus and Zoom / Equipped with a slide mechanism for focus and zoom functions



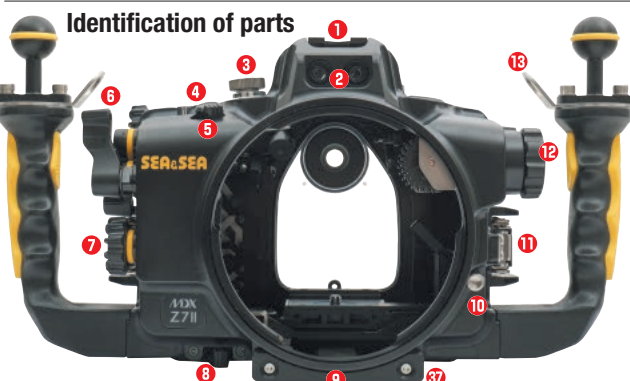
**Most controls can be operated whilst holding the grips.**

Frequently used ISO buttons ① and AF-ON ② buttons have been replaced with lever operation. The movie shooting lever ③ has been placed in the optimum position to prevent blurring during operation.

**The sub selector AE-L is also operated with a lever.** While pressing and holding the AE-L ④, press the AE lever to lock the focus.

**System Samples**

- MDX-Z II Housing
- Extension Ring 20L
- NX Compact Dome Port
- YS-D3 Lightning×2
- Fiber-Optic Cable II L/2 Connector×2/ Optical YS Converter/N1
- SA8(SA8 Double Ball Arm M×2, SA8 Ball Clamp II ×4, SA8 Fixde Ball Base ×2)
- Buoyancy-Arm Handle (Yellow) / Carryb Clip Hardware Kit



- |                                |                        |  |  |                     |
|--------------------------------|------------------------|--|--|---------------------|
| ① Accessory shoe               | ⑨ Tripod screw hole    | ⑰ Extension connector mount            | ⑳ Photo / Movie Selector                           | ㉓ Main command dial |
| ② Fiber-optic cable socket     | ⑩ Lens release button  | ⑱ Mode dial lock button                | ㉔ Multi selector button                            | ㉖ AF-ON lever       |
| ③ Connector hole               | ⑪ Locking latch        | ⑲ Delete button                        | ㉕ Menu button                                      | ㉗ AEL lever         |
| ④ Exposure compensation button | ⑫ Focus / Zoom dial    | ⑳ Main switch for Optical YS Converter | ㉖ Release mode/Self-timer button                   | ㉘ Locking latch     |
| ⑤ Power switch                 | ⑬ Lanyard hook         | ㉑ Finder                               | ㉗ i button   | ㉙ Hand grip         |
| ⑥ Shutter lever                | ⑭ Monitore mode button | ㉒ Leak sensor LED lamp                 | ㉘ Zoom in button                                   | ㉚ Under guard       |
| ⑦ Sub-command dial             | ⑮ Mode dial            | ㉓ Diopter adjustment contorol dial     | ㉙ Zoom out /Thumbnail display button / Help button |                     |
| ⑧ Port lock lever              | ⑯ Playback button      | ㉔ DISP button                          |  |                     |

# The MDX-D850 has newly designed controls.

U/W Housing for Nikon D850

## MDX-D850

Black /Housing only [06187] Spare O-ring [62148]



Compatible with Optical YS Converter/N*	Compatible with MFT C/N	Built-in Leak sensor	24mm HDMI 2 cable Ready Bulkhead
RF and EF lens Ready	Built-in Optical Viewfinder 0.5X	Leak Sentinel Factory Fitted Option	Compatible with VF180 <sup>2</sup> /VF45
Luminescent Control Buttons	Built-in Griup Plus		

\*1. Serial numbers 124000274 and above are compatible with the Nikon D850. Serial numbers below 124000274 are not compatible. New firmware and/or conversion of the converter will be required.  
\*2. When the VF180 1.2x is mounted on the MDX-D850 housing, the lower part of the camera's viewfinder (where the shooting data is displayed) cannot be viewed due to vignetting.

### Much lighter than previous housings.

Although the dimensions are almost the same as the MDX-D810 housing, the MDX-D850 is approx. 400g (14.1oz) lighter on land.



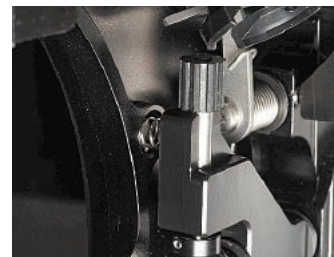
The Release mode dial lock can be locked by pressing and turning.



The AF mode can be adjusted by turning the Main Command dial or the Sub-Command dial (depending on camera configuration) whilst pressing the AF Mode lever.



The Multi-selector control is ideally designed and located and feels just like you are operating the camera selector directly. The Live-view selector and Live-view button are separate for ergonomics and easy operation.



All the dials have a spring (damper) to prevent slip of the controls even if the dimensions of the cameras are slightly different or even if gears or other parts wear out to some extent.



### Most controls can be operated whilst holding the grips.

Frequently-used buttons such as Info 1, ISO 2 and Fn(customizable) are operated by external levers. Playback mode can be switched to playback-zoom mode with just one lever action. 3

### AF Lock Lever features a one-touch lock function.

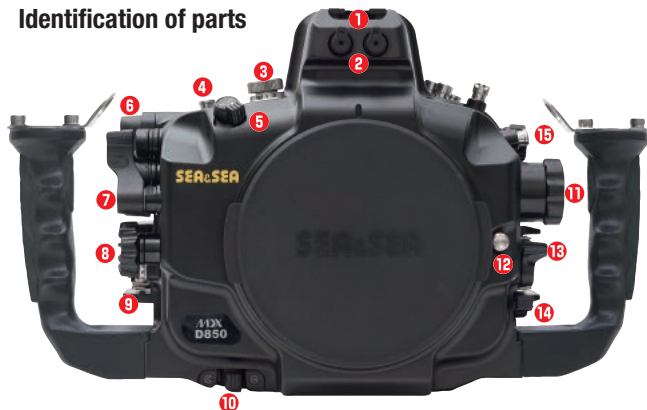
AF function is activated by pressing AF-ON lever. 4 AF can be locked by pressing the lever fully. Press button to release AF lock. 5

### System Samples

- MDX-D850 Housing
- NX Compact Macro Port Base
- Compact Macro Port SII
- YS-D3 Lightning x2
- 5pin Dual Sync Cord/N
- SA8(SA8 Strobe Head S / SA8 SA8 Double Ball Arm S x 2 / SA8 SA8 Ball Clamp II x 4 / SA8 Fixed Ball Base x 2)



### Identification of parts



- |                                |                                  |                              |   |
|--------------------------------|----------------------------------|------------------------------|---|
| 1 Accessory shoe               | 9 Locking latch                  | 17 Image quality button      | 25 Main switch for Optical YS Converter   |
| 2 Fiber-optic cable socket     | 10 Port lock lever               | 18 Metering mode button      | 26 Delete button  |
| 3 Port for strobe              | 11 Focus / Zoom dial             | 19 White balance button      | 27 Protect / Picture controls / Help button   |
| 4 Exposure compensation button | 12 Lens release button           | 20 Shooting mode             | 28 Playback lever / Zoom in lever   |
| 5 Power switch                 | 13 AF-mode lever                 | 21 Extension connector mount | 29 Zoom out / Thumbnail display button / Flash mode / Light control correction button |
| 6 ISO lever                    | 14 Focus-mode selector lever     | 22 Release mode              | 30 OK button  |
| 7 Shutter lever                | 15 BKT button                    | 23 Fn2 lever                 | 31 Finder   |
| 8 Sub-command dial             | 16 Release mode dial lock button | 24 Menu button               |   |
|                                |                                  |                              | 32 Diopter adjustment control dial  |
|                                |                                  |                              | 33 Main command dial  |
|                                |                                  |                              | 34 AF-ON lever  |
|                                |                                  |                              | 35 Info lever   |
|                                |                                  |                              | 36 AE / AF lock button  |
|                                |                                  |                              | 37 Multi selector button  |
|                                |                                  |                              | 38 i button   |
|                                |                                  |                              | 39 Live view selector   |
|                                |                                  |                              | 40 Live view button   |
|                                |                                  |                              | 41 Tripod screw hole  |
|                                |                                  |                              | 42 Lanyard hook   |

**Compact design and ergonomic controls operated within easy reach of handles allows for effortless control of all camera functions.**



U/W housing for Canon EOS R

# MDX-R

Black /Housing only **[06190]** Spare O-ring **[62121]**

[Dimensions (WxHxD)] 342 x 174 x 159 mm 13.5 x 6.8 x 6.4 Inches  
 [Weight] Approx.2900 gm/6.4 lbs. (Including Grips). Depth Rating 100M/330 ft  
 [Construction] Corrosion-resistant aluminum alloy (machined, anodized finish)

Compatible with Optical YS Converter/CR	Compatible with MFT C/N	Built-in Leak sensor	Built-in Grip Plus
RF and EF lens Ready	Built-in Optical Viewfinder 0.5X	Leak Sentinel Factory Fitted Option	Compatible with VF180 /VF45
Luminescent Control Buttons			



The housing provides sufficient room to easily accommodate the latest larger diameter lenses.



By revising our housing design and improving the machining method, the housing has improved ergonomics and durability.



The housing provides sufficient room to easily accommodate the latest larger diameter lenses.



Optional Sync Cord 2-pin Connector enables use of conventional hardwired Sync cable. (Manual mode only)



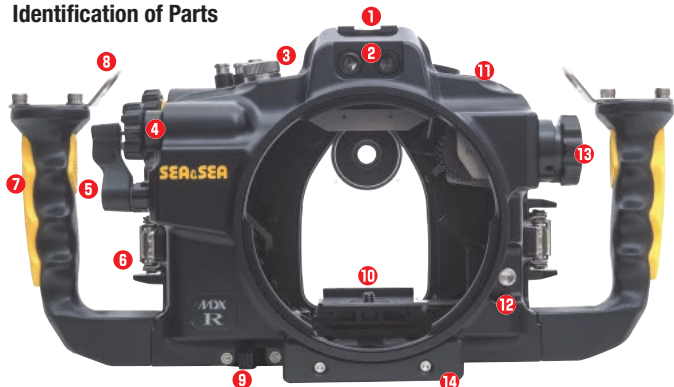
**Most controls can be operated whilst holding the grips.**

Frequently-used buttons such as ISO, AF-ON, Start/Stop and AF Point Selection are operated by external levers. This allows you to access controls with your right hand whilst holding the hand-grip.



The Optical YS Converter converts the camera's hot-shoe TTL signal into an LED light signal. Both TTL and manual strobe photography are possible using a Fiber-Optic Cable II \*. YS-D3Lightning, YS-D2J, YS-D2, YS-D1

## Identification of Parts



- 1 Accessory shoe
- 2 Fiber-optic cable socket
- 3 Port for Strobe
- 4 Main dial
- 5 Shutter lever
- 6 Locking latch
- 7 Hand grip
- 8 Lanyard hook
- 9 Port lock lever
- 10 Quick shoe
- 11 Extension connector mount
- 12 Lens release button
- 13 Focus/Zoom dial
- 14 Under guard



- 15 Power switch
- 16 Main switch for Optical YS Converter
- 17 Menu button
- 18 Finder
- 19 Leak sensor LED lamp
- 20 LCD panel info switching/ Illumination button
- 21 MODE button
- 22 Multi-function lock button
- 23 AE lock/FE lock button
- 24 AF point/Index/ Magnify/Reduce button
- 25 Quick control dial
- 26 Movie shooting lever
- 27 AF start lever
- 28 Cross buttons
- 29 Quick Control / Setting button
- 30 Info button
- 31 Playback button
- 32 Erase button
- 33 Tripod screw hole

Housing satisfies even Professional needs with its superior ergonomic design and ruggedness.



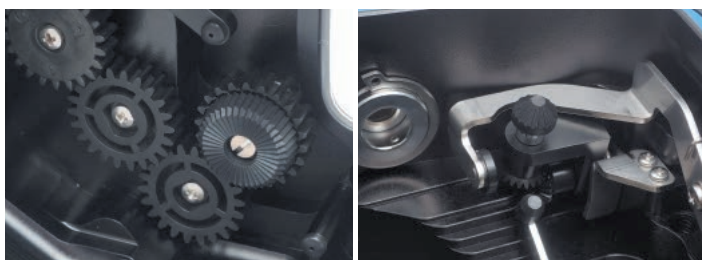
# U/W housing for Canon EOS 5D Mark IV / 5D Mark III MDX-5D Mark IV

Black /Housing only [06181] Spare O-ring [62148]

[Dimensions (WxHxD)] 341 x 198 x 141mm / 13.4 x 7.8 x 5.5 inches  
[Weight] Approx. 3000g / 106oz (Housing only) [Depth rating] 100m / 330ft  
[Construction] Construction: Corrosion-resistant aluminum alloy (machined, anodized finish)

Compatible with Optical YS Converter/CR	Compatible with MFT C/N	Built-in Leak sensor	Built-in Grip Plus
RF and EF lens Ready	Built-in Optical Viewfinder 0.5X	Leak Sentinel Factory Fitted Option	Compatible with VF180 /VF45
Luminescent Control Buttons	*Serial numbers YSC200094 and above are compatible. Serial numbers below YSC200094 are not compatible. New firmware will be required. *When use EOS 5D Mark III camera, Optical YS converter C1 is compatible.		

•Compatible with both the EOS 5D Mark IV and EOS 5D Mark III.



The main command dial, the quick control dial and others have a damper (spring) to provide secure operation. (Controls on the camera will not slip because of the damper).



The tension on the Shutter Release lever can be adjusted in 3 steps.



Sync Cord 2-pin Connector enables use of conventional hardwired Sync cable. (Manual mode only)



### Important controls can be operated whilst holding the grips.

Frequently-used buttons such as ISO, AF Point Selection and Multi-function Selection buttons are operated by external levers, allowing quick and accurate operation.

### AF Lock Lever Lock Function

AF Start button is locked by pressing and turning the control ①. AF Start Lever will remain pressed by pushing the lever forward ②. The AF Start Lever will return to its original position when the AF Start lock release lever is pressed ③.

System  
Sample

- MDX-5D Mark IV Housing
- Fisheye Dome Port 240
- YS-D2 x 2
- 5-pin Dual Sync Cord/N
- SA8 (SA8 Double Ball Arm L x 2 / SA8 Ball Clamp x 4 / SA8 Fixed Ball Base x 2)

### Identification of Parts



- |  |   |  |   |
|--|---|--|---|
| <ul style="list-style-type: none"> <li>① Accessory shoe</li> <li>② Fiber-optic cable socket</li> <li>③ Port for Strobe</li> <li>④ AF start lever lock button</li> <li>⑤ Main-command dial</li> <li>⑥ Shutter lever</li> <li>⑦ Locking latch</li> <li>⑧ Hand grip</li> <li>⑨ Port lock lever</li> </ul> | <ul style="list-style-type: none"> <li>⑩ Housing body cap</li> <li>⑪ Power switch</li> <li>⑫ Mode dial</li> <li>⑬ Extension connector mount</li> <li>⑭ Focus / Zoom dial</li> <li>⑮ Lens release button</li> <li>⑯ Main switch for Optical YS Converter</li> <li>⑰ Playback lever</li> <li>⑱ Info button</li> </ul> | <ul style="list-style-type: none"> <li>⑲ Menu button</li> <li>⑳ Creative Photo / Comparative playback / Direct print button</li> <li>㉑ Rating button</li> <li>㉒ Index / Magnify / Reduce button</li> <li>㉓ Erase button</li> <li>㉔ Finder</li> <li>㉕ Leak Sencor LED lamp</li> <li>㉖ Metering mode selection / White balance selection button</li> </ul> | <ul style="list-style-type: none"> <li>㉗ AF mode selection / Drive mode selection button</li> <li>㉘ Viewfinder Diopter Adjustment Dial</li> <li>㉙ Live View shooting / Movie shooting switch</li> <li>㉚ Start / Stop button</li> <li>㉛ ISO speed setting / Flash exposure compensation / AE lock lever</li> <li>㉜ Multi-function lever</li> <li>㉝ AF point selection lever</li> <li>㉞ AF start lever</li> <li>㉟ AF start lever lock release lever</li> <li>㊱ Quick Control button</li> <li>㊲ Setting button</li> <li>㊳ Multi-controller</li> <li>㊴ Sub-command dial</li> <li>㊵ Tripod socket</li> </ul> |
|--|---|--|---|

# Optical Dome Port II Series

## Main Features

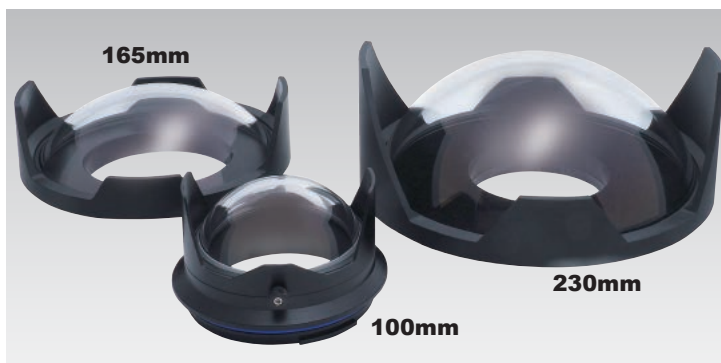
- Uses high quality BK7 crystal glass.

Two different anti-reflective coatings are employed to optimize image quality, one for the exterior and the other for the interior of the Optical Domes. A multi-layer coating is used on the dome exteriors and the interior of the domes are coated with silicon-dioxide to effectively suppress flare and ghosting. As a result, the refractive index of each port is reduced to less than 0.01% and the domes produce extremely high-contrast images.

- Compatible with Internal Correction Lenses (Optical Dome Port II's 165 and 230 only).

Compatible with Internal Correction Lenses which correct image aberration and distortion. The Internal Correction Lenses were only compatible with the Fisheye Dome Port 240 but they can now also be used for both the Optical Dome Port II/165 and Optical Dome Port II/230.

\* In order to maximize effects of an Internal Correction Lens, check system charts for the most suitable extension ring(s). Please refer to the system charts on our website.



The "Optical Dome Port II" series includes five Optical Dome Ports in three different diameters; 100mm, 165mm and 230mm.

➔ Refer to page 25-34 for all System Charts.

## Optical Dome Port II /100

Optical Dome Port II/100 (x3 Versions)

100mm in diameter. The most compact and lightweight optical dome port SEA&SEA offers. Designed exclusively for fisheye lenses.



### Optical Dome Port II / 100 S [30133]

Designed exclusively for Nikon AF DX Fisheye Nikkor ED10.5mm F2.8G (made-to-order item)

[Dimensions (DIAxD)] 130×64.5mm 5.1×2.5inch  
[Weight] 372g 13.1oz. [Depth rating] 80m / 260ft

### Optical Dome Port II / 100 M [30134]

Designed exclusively for Tokina AT-X 107 DX Fisheye 10-17mm F3.5-4.5, for Nikon and Canon cameras.

[Dimensions (DIAxD)] 130×81mm 5.1×3.2inch  
[Weight] 423g 14.9oz. [Depth rating] 80m / 260ft

### Optical Dome Port II / 100 L [30135]

Designed exclusively for Canon EF 8-15mm F4L USM and Nikon AF-S Fisheye Nikkor 8-15mm F3.5-4.5 E ED

[Dimensions (DIAxD)] 130×91mm 5.1×3.6inch [Weight] 450g 15.9oz. [Depth rating] 80m / 260ft

## Optical Dome Port II /165 [30136]



165mm in diameter. Versatile optical dome port, compatible with various fisheye and wide-angle lenses. Peripheral image quality will better when used with an Internal Correction Lens.

[Dimensions (DIAxD)] 185×70mm 7.3×2.8inch  
[Weight] 938g 33.1oz. [Depth rating] 80m / 260ft

## Optical Dome Port II /230 [30137]



230mm in diameter. Versatile optical dome port, compatible with various fisheye and wide-angle lenses. Boasts the best image quality, including peripheral image quality.

Suitable for half-underwater-half-topside images. Peripheral image quality will be even better when used with an Internal Correction Lens.

[Dimensions (DIAxD)] 250×120mm 9.8×4.7inch  
[Weight] 2100g 74.1oz. [Depth rating] 80m / 260ft

## Internal Correction lens

M77 Internal Correction lens [52131] Patent Pending 2015-136497

When used with a 77mm diameter wide-angle zoom lens, the lens corrects image aberration and distortion\*. The lens helps reproduce clear images when mounted on a compatible lens for interchangeable lens cameras (full-frame SLR cameras).

\* Field curvature and distortion are rectified by approximately 2 f-stops value.

[Compatible Port] Fisheye Dome Port 240

[Compatible Lenses] Canon EF17-40mm F4L USM, Canon EF 16-35mm F4L IS USM, Nikon AF-S 16-35mm F4G ED VR, Nikon AF-S Nikkor 18-35mm F3.5-4.5G ED

Lens: 1 element in 1 group (AR-multi-coated on both sides)

[Dimensions (WxHxD)] 85 x 8.4mm / 3.3 x 0.3 inches

[Weight] 48g / 1.7oz

[Construction] Optical glass (AR-multi-coated on the both sides) and corrosion-resistant aluminum alloy.



▼▲ Enlarged image

M82 Internal Correction lens [52132] Patent Pending 2015-136497

When used with a 82mm diameter wide-angle zoom lens, the lens corrects image aberration and distortion\*. The lens helps reproduce clear images when mounted on a compatible lens for interchangeable lens cameras (full-frame SLR cameras).

\* Field curvature and distortion are rectified by approximately 2 f-stops value.

[Compatible Port] Fisheye Dome Port 240

[Compatible Lenses] Canon EF 16-35mm F2.8L II USM  
Lens: 1 element in 1 group (AR-multi-coated on the both sides)

[Dimensions (WxHxD)] 85 x 8.4mm / 3.3 x 0.3 inches

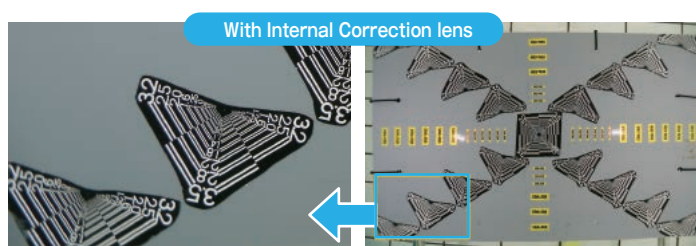
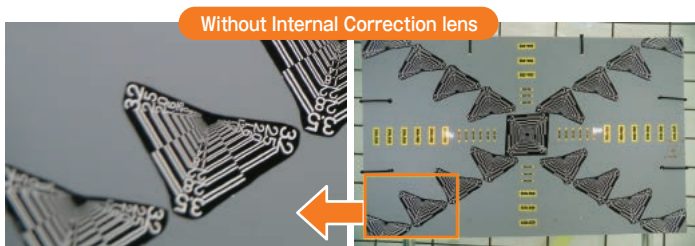
[Weight] 48g / 1.7oz

[Construction] Optical glass (AR-multi-coated on the both sides) and corrosion-resistant aluminum alloy.

M82 Internal Correction lens



Lens: Nikon AF-S 18-35mm F3.5-4.5G ED  
Photographer: Takuya Nakamura



# Ports

## ► Dome Ports

### Universal Dome Port 210AR 30201

Compared with conventional acrylic material or optical glass, PLANEXT® \*1 produces superior or comparable optical performance.

Manufactured with high-precision injection molding, SEA&SEA has succeeded in producing a dome that has the same curvature as a concave meniscus lens.\*2

The UDP 210 AR's optical distortion is as small as that of optical glass lenses and when used with an internal correction lens, the highest image quality of high-end cameras can be obtained. Though the dome is made from plastic, it can be treated with stable AR coating. The UDP 210 AR has Anti Reflective coatings to prevent internal reflection.

\*1: PLANEXT® is Teijin Limited's registered trade name.

\*2: Lens having convex curvature on one side and concave curvature on the other side.

➔ Refer to page 25-34 for all System Charts.

\* Includes additional bayonet mounting for housing manufactured by third party.

[Body] : Corrosion-resistant aluminium alloy, [Dome] : Special optical resin, [Hood] : ABS rein  
[Dimensions (DIAxD)] 250 x 104mm / 10x4.16 inches [Weight] 1,310g / 46.2 oz. [Depth rating] 100m / 330ft



### Fisheye Dome Port 240 30116

This high quality dome port is very versatile and suitable for various wide-angle full frame lenses.

\* Image aberration is rarely apparent.

[Dimensions (DIAxD)]  
250x104mm / 10x4.2inches  
[Weight]  
Approx. 1,270g / 45oz  
[Depth rating] 80m / 262ft



### NX Compact Dome Port

56601

[Dimensions (DIAxD)]  
174x79.5mm / 7x3.2inches  
[Weight]  
Approx. 410g / 14oz  
[Depth rating] 60m / 200ft



## ► Macro Ports

### DX Macro Port 15 30139

Macro Port for Canon EF-S 35mm Macro IS STM lens.

[Dimensions (DIAxD)]  
132x48mm / 5.2x1.9inches  
[Weight] Approx. 308g / 10.9oz  
[Depth rating] 100m / 330ft  
distance between the mount and the inner glass surface : 14.5mm



### DX Macro Port 52 30111

The port has a M67 screw mount on the front.

[Dimensions (DIAxD)]  
132x62.5mm / 5.3x2.5inches  
[Weight] Approx. 360g / 13oz  
[Depth rating] 100m / 330ft  
distance between the mount and the inner glass surface : 34mm / 1.3 inches



### DX Macro Port 87 30119

Macro port designed for Canon EF100mm IS USM / EF 100mm F2.8 Macro USM, AF-S VR Micro Nikkor ED105mm F2.8G (IF) / AF-S DX Micro Nikkor 85mm F3.5G ED VR. This port accommodates listed lenses without additional port-base or extension ring.

Port has M67 screw mount.

[Dimensions (DIAxD)]  
128x120.5mm / 5.0x4.7inches  
[Weight] Approx. 505g / 18oz.  
[Depth rating] 100m / 330ft  
distance between the port mount and inner glass surface: 87mm / 3.4 inches



### Compact Macro Port 52 56241

[Dimensions (DIAxD)]  
102.5x68mm / 4.1x2.7inches  
[Weight] Approx. 259g / 9oz  
[Depth rating] 100m / 330ft  
[Construction] Corrosion-resistant aluminum alloy (alumite coating) + Tempered glass  
distance between the mount and the inner glass surface: 38.5mm/ 1.5 inches



## ► ML Ports & Extension Rings

### ML Flat Port 33 30120

For mirrorless interchangeable camera housings. The port has an M67 screw mount on the front.

[Dimensions (DIAxD)]  
93 x 59mm / 3.7 x 2.3 inches  
[Weight] 220g / 8 oz.  
[Depth rating] 100m / 330ft



Distance between the port mount and the inner glass surface: 33mm / 1.3 inches

### ML Flat Port 63 30128

[Dimensions (DIAxD)]  
104 x 84mm / 4.1 x 3.3 inches  
[Weight] 337g / 12oz  
[Depth rating] 100m / 330ft  
[Construction] Corrosion-resistant aluminum alloy (anodized, anti-reflection coating on inner surface)  
[Distance] Between the port mount and inner glass surface : 63mm / 2.5 inches



### ML Extension Ring 25 30122

Extension ring for mirrorless interchangeable lens cameras (equipped with port lock).  
[Dimensions (DIAxD)]  
97 x 36mm / 3.8 x 1.4 inches  
[Weight] Approx. 111g / 4oz  
[Depth rating] 100m / 330ft  
[Construction] Corrosion-resistant aluminum alloy (alumite coating)  
distance between the mount and the front end: 25mm / 1.0 inches



### ML-NX Conversion Ring 30 30126

ML-NX Conversion Ring, when used, allows for the use of NX ports and extension rings on ML housings.  
[Dimensions (DIAxD)] 133 x 41.2mm / 5.2 x 1.6 inches  
[Weight] Approx. 199g / 7oz  
[Depth rating] 100m / 330ft  
[Construction] Corrosion-resistant aluminum alloy (alumite coating)  
[Distance] Between the mount and the front end: 30mm / 1.2 inches (with port lock)



### Extension Ring 20L 30123

[Dimensions (DIAxD)]  
129 x 35.5mm / 5.1 x 1.4 inches  
[Weight] Approx. 154g / 5oz  
[Depth rating] 100m / 330ft  
[Construction] Corrosion-resistant aluminum alloy (alumite coating)  
[Distance] Between the mount and the front end: 20mm / 0.8 inches (with port lock)



## ► Extension Rings

### Extension Ring 30L 30124

[Dimensions (DIAxD)]  
129 x 45.5mm / 5.1 x 1.8 inches  
[Weight] Approx. 194g / 7oz  
[Depth rating] 100m / 330ft  
[Construction] Corrosion-resistant aluminum alloy (alumite coating)  
[Distance] Between the mount and the front end: 30mm / 1.2 inches (with port lock)



### Extension Ring 40L 30125

[Dimensions (DIAxD)]  
129 x 55.5mm / 5.1 x 2.2 inches  
[Weight] Approx. 234g / 8oz  
[Depth rating] 100m / 330ft  
[Construction] Corrosion-resistant aluminum alloy (alumite coating)  
[Distance] Between the mount and the front end: 40mm / 1.6 inches (with port lock)



### Extension Ring 46 with Focus Knob 30117

Extension Ring 46 with Focus Knob, provides manual focus for compatible zoom lenses. (Extension ring equipped with port lock).  
[Dimensions (DIAxD)]  
132x61.4mm / 5.2x2.4inches (excluding protruding parts)  
[Weight] Approx. 525g / 19oz  
[Depth rating] 100m / 330ft  
distance between the mount and the front end: 46mm / 1.8 inches  
Use of the Left Grip Extension (#46117) is recommended. This will move the location of the Left Hand Grip forward.



## ► RDX Port & Bases

### RDX Standard Port 30107

[Dimensions (DIAxD)]  
140x90mm / 5.6x3.6inches  
[Weight] Approx. 500g / 18oz  
[Depth rating] 100m / 330ft  
distance between the mount and the inner glass surface : 80.2mm / 3.2 inches



### RDX Port Base S 30108

[Dimensions (DIAxD)]  
102x15mm / 4.1x0.6inches  
[Weight] Approx. 90g / 3oz  
[Depth rating] 100m / 330ft  
distance between the mount and the front end : 11.2mm / 0.4 inch



### RDX Port Base L 30109

[Dimensions (DIAxD)]  
132x55mm / 5.3x2.2inches  
[Weight] Approx. 300g / 11oz  
[Depth rating] 100m / 330ft  
distance between the mount and the front end : 31.2mm / 1.2 inches



## (Reference) Distance between housing port mount and camera's lens mount;

MDX housing for Olympus interchangeable lens camera:	26mm / 1.0 inch	MDX housings for Canon Digital SLR cameras:	39.3mm / 1.5 inches
RDX housings for Canon Digital SLR cameras:	30.3mm / 1.2 inches	MDX housings for Nikon Digital SLR cameras:	35.3mm / 1.4 inches
RDX housing for Nikon Digital SLR camera:	30.3mm / 1.2 inches	MDX housing for Sony Mirror less camera (MDX-a7III) :	44mm / 1.7 inch

## ▶ Leak Sentinel V5XB Lets you check the housing's water-tight integrity before diving.



System Sample

### Leak Sentinel V5XB 46128

[Dimensions (WxH)]  $\varnothing 20 \times 48 \text{mm}$  /  $\varnothing 0.8 \times 1.9$  inches  
 [Weight] Approx. 30g / 1oz [Depth rating] 100m / 330ft  
 [Construction] Corrosion-resistant aluminum alloy  
 [Battery] CR2032

Although small in size, the Sentinel V5 is equipped with a pressure sensor and built-in LED along with an external vacuum pump. The pump creates a vacuum inside the housing, the sensor detects any leaks and the lights let you know if it is safe to dive or not;

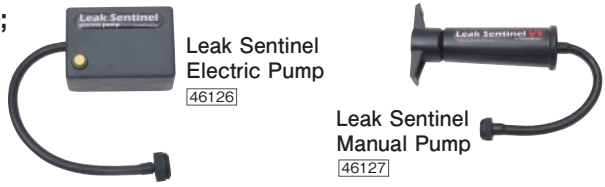


LED flashes red and green when the housing leaks air.



LED flashes green when the housing does not leak.

### Two types of pumps available; Manual or Electric



Leak Sentinel Electric Pump 46126

Leak Sentinel Manual Pump 46127

\* The Leak Sentinel V5 is fitted into the housing's accessory port and is compatible with some older SEA&SEA housings with accessory ports. Contact an official SEA&SEA dealer for details of compatible housings.

\* Equipped with Low Battery Warning function. Battery life is approximately one hundred hours.

## ▶ Manual Flash Trigger(MTF) NEW

Device which converts camera's firing signal to a light signal.

Equipped with remaining battery indicator.



50145

50144

## ▶ YS Converters

Optical YS Converter/N1 for MDX housing 50126

Optical YS Converter/C2 for MDX housing 50142

Optical YS Converter/CR for MDX housing 50143

Optical YS Converter/S1 for MDX housing 50139 \*1



System Sample

A compact unit that converts the camera's TTL signal to a light signal. The converter can be mounted on the camera's accessory shoe and can be connected to (a) SEA&SEA strobe(s) with Fiber-Optic Cable(s) (\*2). TTL and manual modes can be switched by pushing the mode switch on the housing.

\*1 Installation of the Sony S1 optical converter must be performed by an Authorized Sea&Sea dealer or Service Center. To connect the camera to the optical converter S1, a Sony genuine adapter "ADP-MAA" is required.

\*2 SEA&SEA's Fiber-Optic Cable II must be used with an Optical YS Converter.

[Controls] Power ON/Power OFF/TTL mode (indicated by blue lamp)/Manual mode (indicated by green lamp)  
 [Auto Power Off] The converter will automatically power off if the shutter lever or the modeswitch is not activated for more than one hour.

[Power Source] 2 x AAA battery (Alkaline: 3.0V / Ni-MH: 2.4V) [Power Source] (\*3) Alkaline: 15 hours / Ni-MH: 12 hours  
 [Weight] 154g / 5oz.

\*3 Operating time depends on the battery brand, temperature and frequency of use.

Optical YS Converter/N1 for MDX housing / MDX-DB10, MDX-D7100, MDX-D500, MDX-D850, MDX-Z7, MDX-Z7II

Optical YS Converter/C2 for MDX housing / MDX-5D Mark III ver.2(When using EOS 5Ds / 5Ds R), MDX-5D Mark IV

Optical YS Converter/CR for MDX housing / MDX-R, MDX-R5

Optical YS Converter/S1 for MDX housing / MDX-a7III, MDX-a7IV

## ▶ ViewFinder

VF180 1.2x 46112

Straight prism viewfinder compatible with both the RDX and MDX series housings. Can be attached to the housing by replacing the original viewfinder. The magnification ratio is 1.2x without sacrificing the field of view. As the VF180 1.2x is straight finder, you can compose your images as if you are looking directly through the camera's viewfinder. Its 8 element 6 group optical lenses reproduce natural colors.

The viewfinder is filled with nitrogen gas to prevent condensation and fogging. The eyepiece guard helps provide a clear view as it does not allow light to enter the viewfinder.

[Construction] corrosion-resistant aluminum alloy  
 [anodized body (Black)]  
 [Depth rating] 100m / 330ft  
 [Dimensions (DIxXD)] 45x111mm / 1.8x4.4inches  
 [Weight] 275g / 10oz



\*The image is simulated.

VF45 1.2x 46111

A 45° prism viewfinder (magnification: 1.2x).

The optional VF45 Prism viewfinder replaces your housing's original viewfinder and offers superior vision. Covering the entire field of view, the VF45 enhances magnification by 1.2x and enables subtle framing and focusing of subjects.

The eyepiece rotates 360° in increments of 90° to provide the ideal camera position in either landscape or portrait.

\*The viewfinder is not compatible with RDX series housings.

[Construction] corrosion-resistant aluminum alloy  
 [anodized body (Black)]  
 [Depth rating] 100m / 330ft  
 [Dimensions (WxHxD)] 58x99x96mm / 2.3x3.9x3.8inches  
 [Weight] 390g / 14oz



\*The image is simulated.

## ▶ Optical Viewfinder

Optical Viewfinder 0.5x 46108

Reduces vignetting in the viewfinder's image. Recommended for wide-angle photography or other situations when it is essential to check the overall composition of the picture. Depending on the situation, the viewfinder can be replaced with a standard pick-up viewfinder.

\*The reflected image appears in the four corners of the viewfinder depending on the camera model.



Optical Viewfinder 0.66x 46109

Standard viewfinder that provides good visibility for the entire field of view.

\*The reflected image appears in the four corners of the viewfinder.



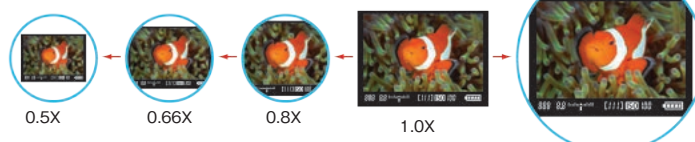
Optical Viewfinder 0.8x 46104

We recommend this viewfinder for near-sighted users and for photographers who want to make sure the focus is clear in the center of the image during macro photography. You can interchange this viewfinder with the standard pickup viewfinder to best suit your needs.

\*The reflected image appears in the four corners of the viewfinder.



### Comparison of images with different interchangeable pick-up finders



\* Composite image used.

\* The appearance of the image will differ depending on how you look through the viewfinder and the camera you use.

▶ Please note that models with this symbol have been discontinued. Availability is limited.

## ► Stays, Arms & Accessories [SA8]

**Meticulously machined from a solid aluminum block, the Sea Arm 8 system is highly rigid, but at the same time, incredibly light.**

The unique structure of the Double Ball Arms was designed with the latest structural analysis software. The Double Ball Arms is available in three lengths, namely, short, medium, and long. The diameter of the ball is 24.8mm. The O-ring for the ball, which is made of synthetic rubber, has high wear resistance and durability. An ergonomically designed clamp enables the Double Ball Arms to be tightened and loosened with little effort. All Sea Arm 8 components are sold separately. [Spare O-ring Set for SA8 \(4x O-Ring Pack\) \[62151\]](#)

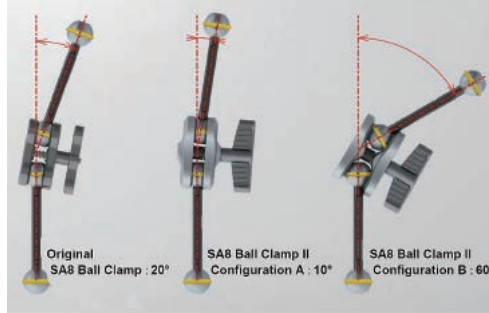
### ① SA8 Ball Clamp II [22138]

[Dimensions (WxHxD)] 66x71x26mm / 2.6x2.8x1.02inch  
[Weight] 97g / 3.42oz



**The New Ball Clamp can be configured in two ways, by reversing the ball clamp sections.**

### New SA8 II and Original SA8 Ball Clamp Comparison.



### Configuration A



Suitable when a solid and stable joint is required. More solid and more stable than the original SA8 ball Clamp, with limited sideways movement.

### Configuration B



Suitable when more sideways movement is required. More range of sideways movement is achievable with the same solidity and stability as the original SA8 Ball Clamp.

### ② SA8 Double Ball Arm S [22112]

[Length] 143mm / 5.7inches  
[Weight] 60g / 2.1oz



### ③ SA8 Double Ball Arm M [22113]

[Length] 223mm / 8.9inches  
[Weight] 80g / 2.8oz



### ④ SA8 Double Ball Arm L [22114]

[Length] 323mm / 12.9inches  
[Weight] 110g / 3.9oz



### ⑤ SA8 Strobe Head S [22115]

Used to mount a YS series strobe.  
[Length] 68.5mm / 2.7inches  
[Weight] 41g / 1.4oz



### ⑥ SA8 Strobe Head M [22126]

Longer than SA8 Strobe Head S. Used to mount a YS series strobe.  
[Length] 121.3mm / 4.85inches  
[Weight] 50.5g / 1.76oz



### ⑦ SA8 Double Strobe Head [22129]

Two strobes or lights or a combination can be mounted on the double head for various lighting options.

[Length] 120mm / 4.8inches  
[Weight] 70g / 2.5oz



### ⑧ SA8 Double Ball Strobe Head [22127]

A SA8 Strobe Head can be attached to this component.

[Length] 121mm / 4.9inches  
[Weight] 70g / 2.5oz



### ⑨ SA8 Slide Ball Base [22117]

Slides into the Bracket Shoe for mounting a Double Ball Arm with the Ball Clamp.

[Dimensions (WxH)]  
33x72mm / 1.3x2.9inches  
[Weight] 83.5g / 2.9oz



### ⑩ SA8 Fixed Ball Base [22119]

Attaches to the Extra Grip or the Camera Tray Adaptor and holds a Double Ball Arm in place with the Ball Clamp.

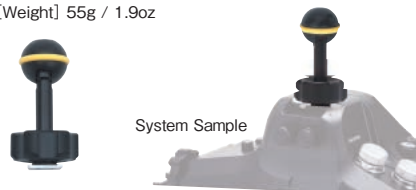
[Dimensions (WxHxD)] 40x47x15mm / 1.6x1.9x0.6inches  
[Weight] 37g / 1.3oz



### ⑪ SA8 Ball Base For Accessory shoe II

Mounts on the housing's accessory shoe; now more user-friendly.

Attaches to the Accessory Shoe on a SEA&SEA housing. A YS series strobe can be attached with the Ball Clamp and the Strobe Head S / M.  
[Length] 68.5mm / 2.6 inches  
[Weight] 55g / 1.9oz



### Hot Shoe Arm [29501]

This shoe arm attaches to a housing port or an accessory shoe on the Multi Strobe Ring  $\phi$ 100mm. Accepts small strobes, Shutter-Activated Focus Light.



### ⑫ SA8 Camera Tray Extension

This component provides you with a comfortable grip when holding the housing with two strobes attached.



[Dimensions (WxHxD)]  
35x35x15mm / 1.4x1.4x0.6inches  
[Weight] 38g / 1.3oz

### ⑬ SA8 Extra Grip [22122]

Ergonomically designed grip. The Bracket shoe or the Ball Base for Accessory can be mounted on the grip. Equipped with a lanyard hole.

[Dimensions (WxHxD)]  
52x120x15mm / 2.1x4.8x0.6inches  
[Weight] 111g / 3.9oz



### ⑭ SA8 Camera Tray Adapter [22123]

Adapter for connecting the Camera Tray and the Extra Grip. The position of the grip can be adjusted sideways.

[Dimensions (WxHxD)]  
100x5x35mm / 4x0.2x1.4inches  
[Weight] 42g / 1.5oz



### ⑮ SA8 Camera Tray + Grip [22118]

Grip with a universal camera housing tray that is compatible with most compact camera housings on the market.

[Dimensions (WxHxD)]  
217x130x77mm / 8.7x5.2x3.1inches  
[Weight] 275g / 9.6oz



### Lens Caddy for M67 Wide-angle Conversion Lens [60105]

The caddy is made of aluminum alloy and enables accessory lenses with M67 screw mounts to be attached to a SA8 Double Ball Arm (S/M/L) and stored when not in use. The caddy is securely bolted in place ensuring there is no movement or slip. Either the M67 Wide-angle Conversion Lens 0.6x (#52123) can be mounted. Two accessory lenses with M67 mounts can be attached to a SA8 Double Ball Arm if you have two Lens Caddies fitted (one on each side).



## ► Grips, Stays & Accessories [Others]



### Buoyancy-Arm Handle

- Black [46124](#)
- Yellow [46131](#)
- Pink [46132](#)

System Samples



As a housing carry handle



As strobe arms for macro photography

Multipurpose float that can be used as a buoyancy arm and as a carry handle.

- \* Because this unit floats, it will not hinder housing operation when used as a handle.
- \* The Sea Arm 8 Fixed Ball Base can be attached to the Buoyancy-Arm Handle.
- \* Underwater Buoyancy: Approximately 280g.



### Carryb Clip Hardware Kit [46130](#)

Required to fix the handle to housing.



### SA8 Fixed Ball Base Mounting Hardware Kit [46133](#)

Two SA8 Fixed Ball Bases can be attached to the handle with this kit.

System Sample

\*Image shows example of installing 3 ball base sets

### **NEW** Grip Plus

Handle insert for firm and steady grip. Can be fitted easily by just inserting the Grip Plus in the concave part of the handle.



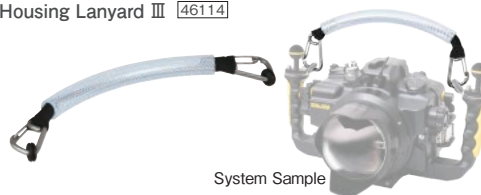
Yellow [22142](#)

Black [22145](#)



System Sample

### Housing Lanyard III [46114](#)



System Sample

New lanyard for carrying SLR housing. The clips have been designed to prevent accidental release. Rubber covers reduce noise for videography. Can be used with all MDX series housings and other SEA&SEA housings mounted on the Grip-Stay L II.

### Desiccant Pack (OZO) [62168](#)

OZO has about four times the hygroscopicity of silica gel. Furthermore, it excels in rapid moisture absorption and continues to absorb moisture without releasing moisture even in low humidity. It solidifies when it cannot absorb more moisture, so the replacement time can be easily determined.

Specifications  
[Dimensions] 60mm×10mm  
[Weight] 0.55g



### Grip Extension

Widens distance between grip and housing by 8mm, useful accessories for photographer with large hands. Two extensions come with exclusive screws as a set.

#### Compatible housings:

For Canon cameras: MDX-6D/70D/7D Mark II/80D/5D Mark III ver2/5D Mark IV/R/R5  
For Nikon cameras: MDX-D7100/D810/D500/D850/Z7/Z7 II  
For Sony cameras: MDX-a7 II/a7 III



Gray [22143](#)

Yellow [22144](#)



System Sample

### Sacrificial Zinc Anode (2 pieces) [46116](#)

Housing equipped with two sacrificial zinc anodes as standard (one on the front case and one on the rear) to avoid electrolysis damage.



### Left Grip Extension [46117](#)

With this product, the left housing grip can be positioned forward to provide easy access to the focus knob on the Extension Ring 46 with Focus Knob with Focus Gear.

[Dimensions (WxHxD)] 10 x 25 x 54mm / 0.4 x 1.0 x 2.1 inches  
[Weight(including accessories)]Approx. 55g / 2oz  
[Construction] Corrosion-resistancealuminum alloy (aluminite coating)

Without LGE

With LGE



## ► Port Covers, Body Cap & Others

Fits securely over the port mount or face of the port and protect them from dust, debris or scratches. \*The following covers and cap are not waterproof.

### Front Port Cover <S> [51220](#)

- Compact Macro Ports



### ML Dome Port Cover [46119](#)

- ML Dome Port



### RDX Rear Port Cover [46113](#)

- RDX-series housings



### NX Dome Port Cover [51211](#)

- Fisheye Dome Port 240  
- NX Fisheye Dome Port



### Rear Port Cover <S> [51250](#)

- Compact Macro Ports



### Wide Port Cover [46101](#)

- Compact Wide Port L  
- RDX Standard Port



### Rear Port Cover <L> [51260](#)

- All NX-series ports  
(except Compact Macro Ports)



### Compact Dome Port Cover [46020](#)

- NX Compact Dome Port  
- CX Compact Dome Port



### Housing Body Cap <L> [51280](#)

- NX-series housings  
- DX-series housings  
- MDX-series housings



### O-ring Remover [01920](#)

A tool to safely remove O-rings for cleaning and greasing without damaging the O-ring or O-ring channel.



### ML Rear Port Cover [46121](#)

- ML Mount Ports



### ML Housing Body Cap [46120](#)

- Mirrorless interchangeable lens camera housings



### SEA&SEAオリジナルステッカー

大:9.5cm×32cm ¥550 (税込) [830070](#)  
中: 6cm×20cm ¥330 (税込) [830030](#)  
小:3.5cm×12cm ¥220 (税込) [830040](#)



### Silicone Grease [01900](#)

SEA&SEA's own brand of lubricant to keep O-rings supple.



## ► Spare O-Ring Set

Code	Item
62160*	for ML ports
62145	for RDX ports
62101	for NX ports / DX Macro Port 52 / DX Macro Port 87
62152*	for VF45 / VF180
56290	for Compact macro port / CX compact dome port

\* Silicone grease is not included.

商品コード	対応機種
62144	for RDX series housings / MDX-a7 II / MDX-EM5 Mark II
62158*	for MDX-a6000 / MDX-a6300
62148*	for MDX-5D Mark IV / 80D / D850 / D500 / 7D Mark II / MDX-5D Mark III ver.2 / 70D / 7D / D7000
62146	for MDX-D810 / D800 / D700
62137	for MDX-40BRO 5D Mark II
62147	for MDX-a7 III / D7100 / D600 / D300s / MDX-L-a7 IV
62155*	for MDX-GRD IV
62121	for MDX-R5 / R / Z7 II / Z7 / 5D Mark III / DX-D50 / 350D DX-D200 / D80

商品コード	対応機種
10580*	YS-30 / 90 / 110α / 01 / 02 / 03 / D1 / D2 01 SOLIS / 03 SOLIS / D3 LIGHTNING
17210	Sync Cord/N, Dual Sync Cord/N
62134	MDX-RX100 III / MDX-RX100 II / DX-1G / 2G
62169*	DX-6G

# DX-6G camera/housing system



06667 US  
06668 EU

Macro Flashlight Diffuser with Strap, Hand Strap for DX-6G, Power Adapter, Rechargeable Lithium-Ion Battery, Macro Stand, USB cable, Strap for 6G, Silicon Grease, O-ring Remover

Spare O-ring 62169 Spare Battery D-LI92 54104



## 6G CAMERA

The 6G is an all-weather, rugged and reliable camera for all outdoor adventures. Take it mountain climbing, skiing, fishing and scuba diving – boasting a depth rating of 14m/46ft and drop impact resistance of 1.6m/5ft.

The camera will also function at temperature as low as -10°C / 14°F.

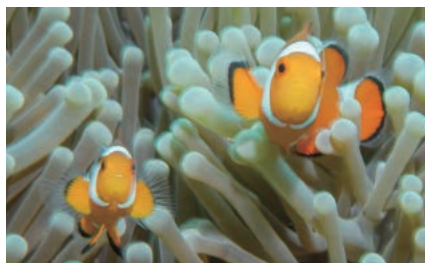
### Main features

5 x zoom lens from wide-angle 28mm reproducing high-definition and crystal-clear images.



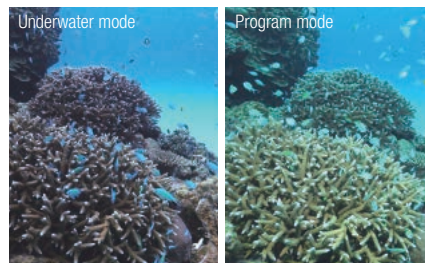
CMOS with 16 megapixels together with high-performance image engine to produce low-noise and wide dynamic range images.

Equipped with macro mode. As close as 1cm / 0.4inch to the subject.



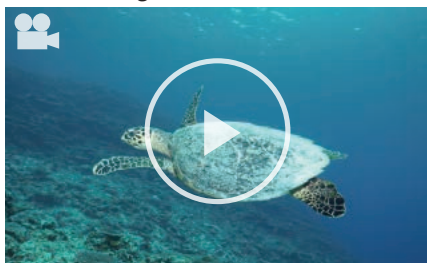
Enables you to bring the lens as close as 1cm/0.4 inch to the subject without a close-up lens, enabling enlarged picture of a small objects.

Equipped with Underwater Mode for optimum underwater photos and videos.



This mode uses white balance optimized for underwater photos, making colors appear more natural by adding reds that tend to get lost in photos taken underwater.

### Records High Definition video.



Records 264/30fps High Definition movie. As equipped with HDMI terminal (type D), the camera can be connected to a television with ease.

### Specifications

- Lens: 11 elements in 9 groups (five aspherical lenses are employed).
- Focal length: 5-25mm (28-140mm 35mm film camera equivalent)
- Maximum aperture: F3.5 (W) – F5.5 (T)
- Effective pixels: approx. 16 mega pixels
- Image sensor: 1/2.3 inch CMOS
- Zoom lens: optical x 5 times, digital x 7.2 times
- Image stabilizer still/moving images: electronic
- Dimensions (w x h x d): 122.5 mm x 61.5 mm x 29.5 mm / 4.8 x 2.4 x 1.2 inches
- Weight: approx. 193g/6.8oz (including battery and memory card)

## 6G HOUSING

Housing is depth rated to 55m/180ft, rugged, lightweight and compact. Exclusively designed for the camera.



Construction: Polycarbonate, depth rating: 55m/180ft, Dimensions (w x h x d): 165 mm 93 mm x 61.5 mm / 6.5 x 3.7 x 2.4 inches

Rugged and durable housing made in Japan with time-proven construction. Wide-angle conversion lens available. (DX-1G/2G wide-angle conversion lens compatible)



### Comes with Macro ring diffuser as standard

Diffuses light from the built-in flash evenly, illuminating whole image when macro photo is taken.

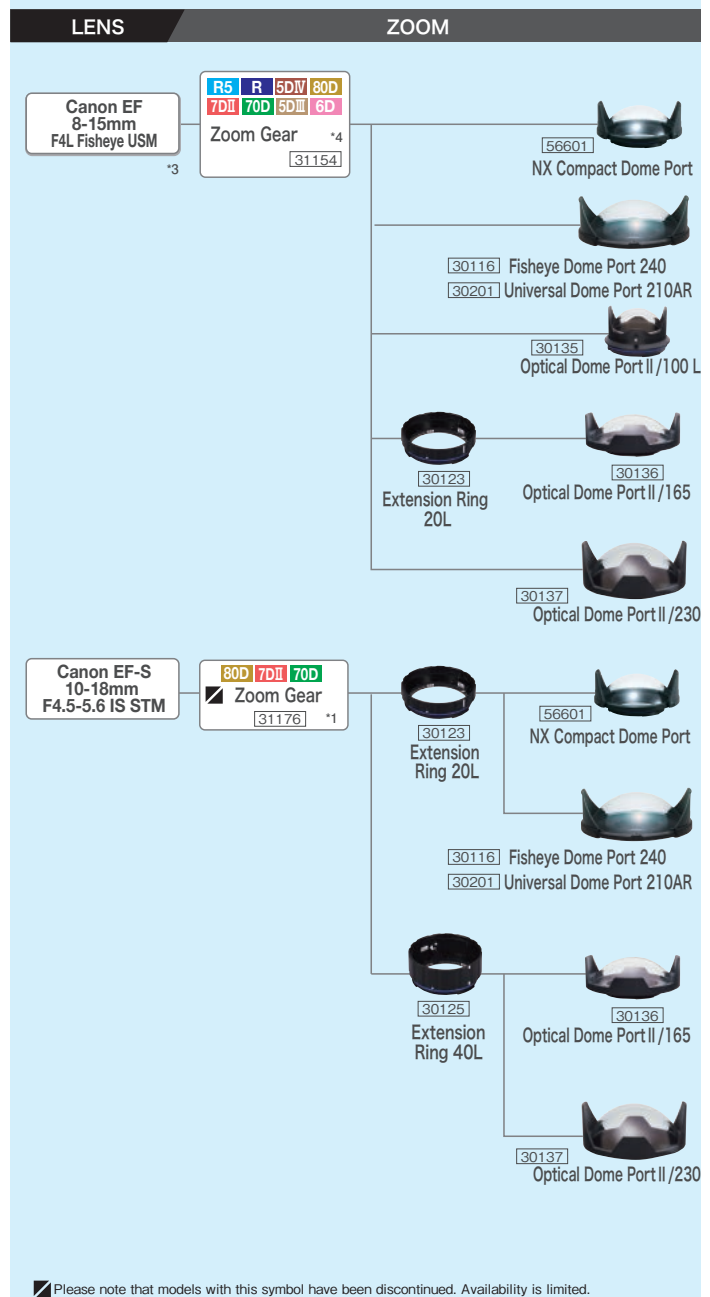
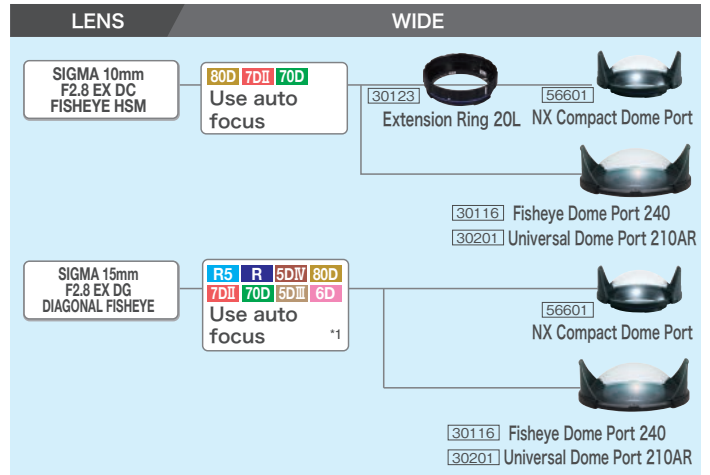
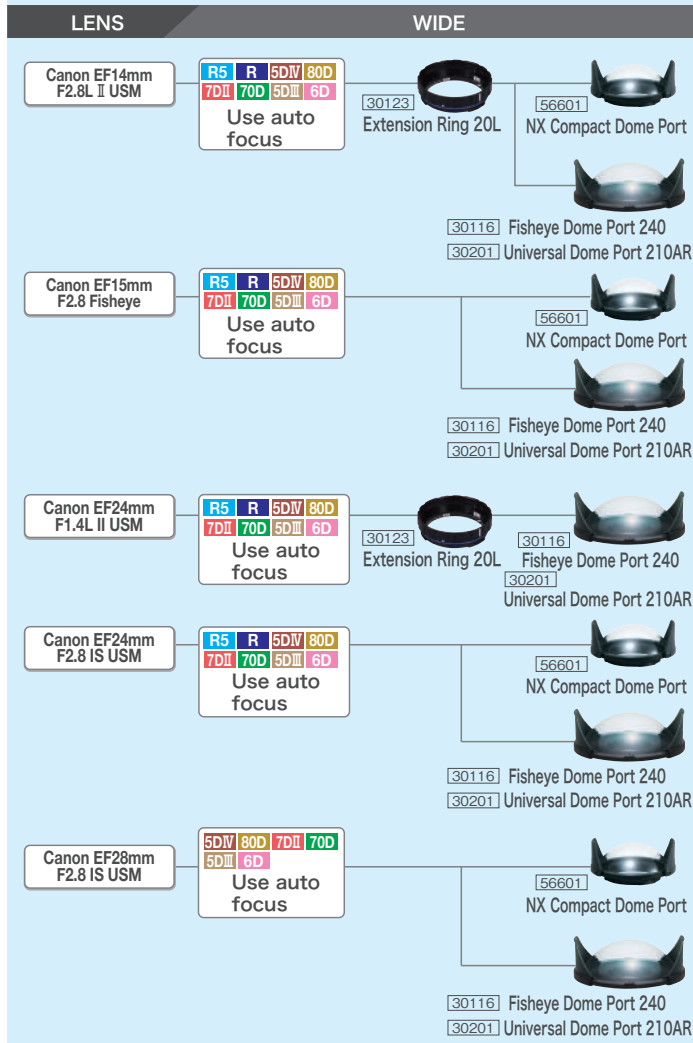
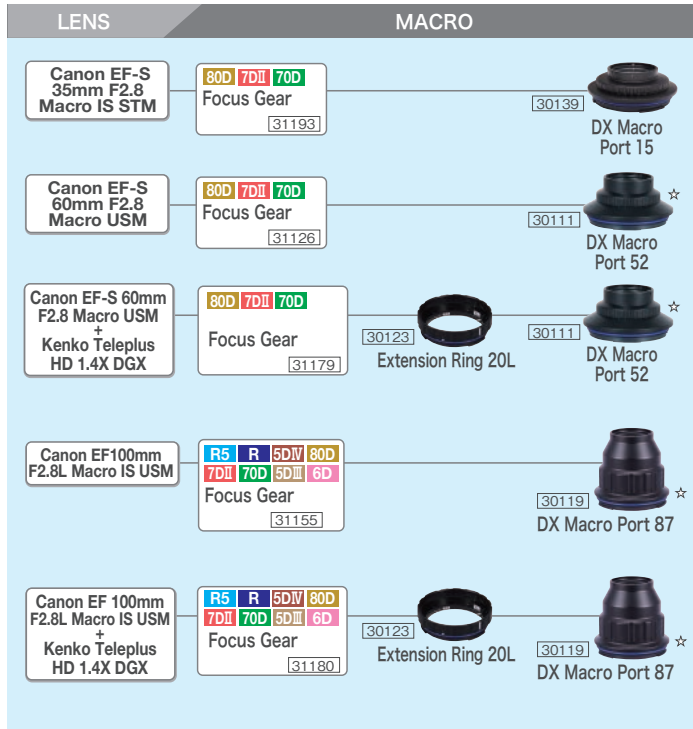


### Optional accessory

Wide-angle conversion lens x 0.6. Can be attached and detached underwater.

# System Chart for MDX Housings for Canon

MDX-R5, MDX-R, MDX-5D MarkIV, MDX-80D, MDX-7D MarkII, MDX-70D, MDX-5D MarkIII, MDX-6D



Please note that models with this symbol have been discontinued. Availability is limited.

Housings with the following marks are compatible

R5 MDX-R5 R MDX-R 5DIV MDX-5D Mark IV 80D MDX-80D 7DII MDX-7D Mark II 70D MDX-70D 5DIII MDX-5D Mark III 6D MDX-6D

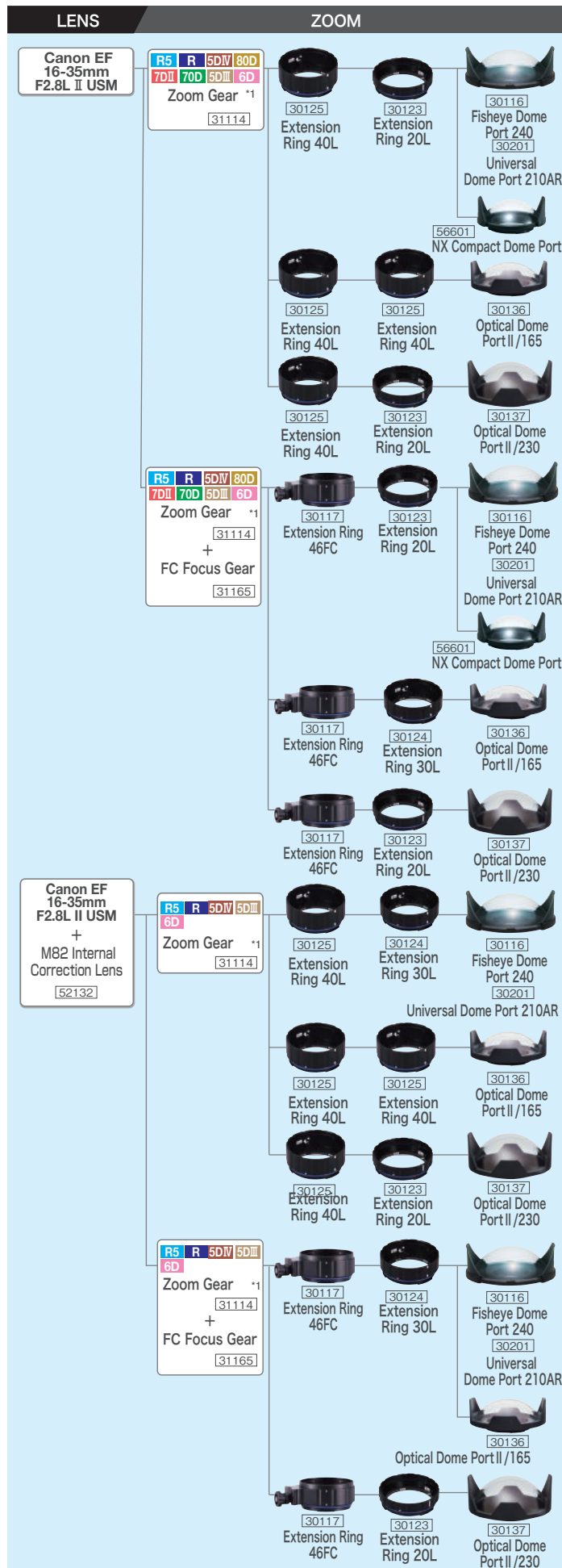
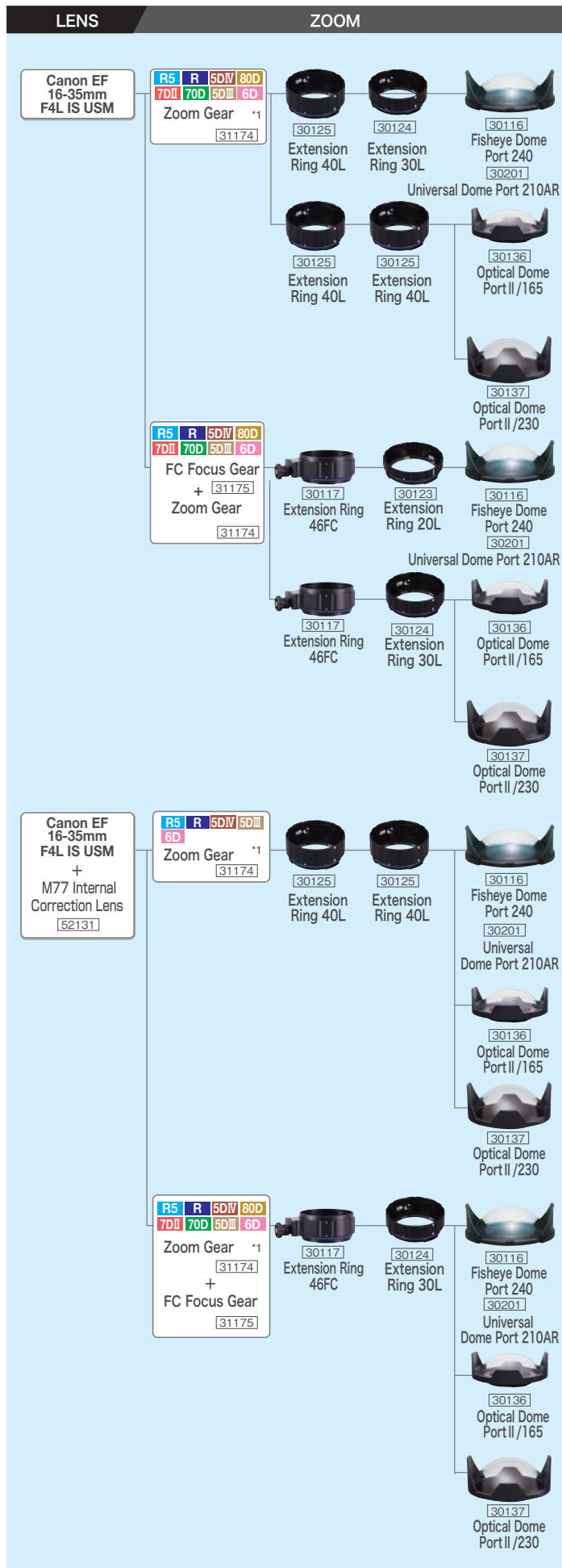
☆ : A close-up lens with M67 mount can be attached to the end of the port.

\*1:Manual focus cannot be used. \*2:Auto focus cannot be used.

\*3:It may be necessary to remove the dome shades at the widest picture angle so they do not appear in the images.

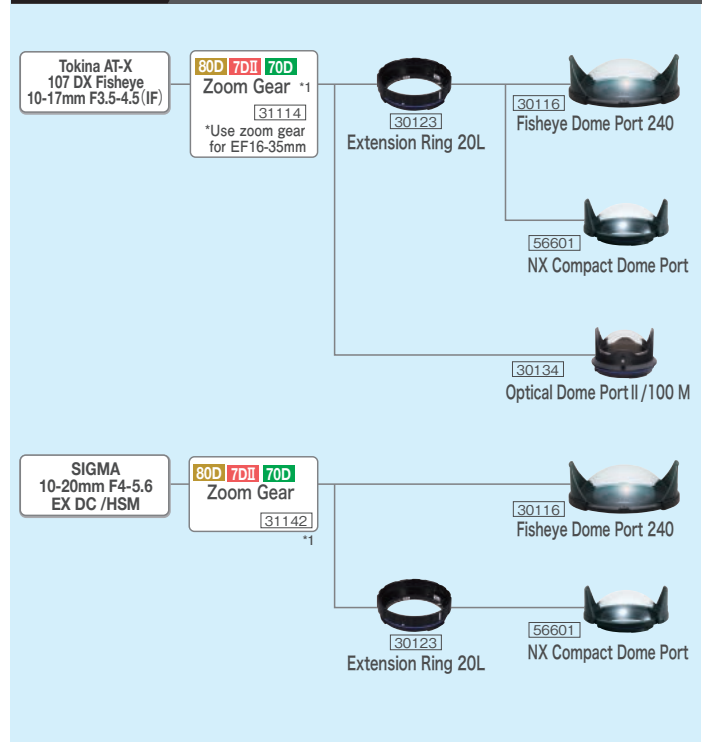
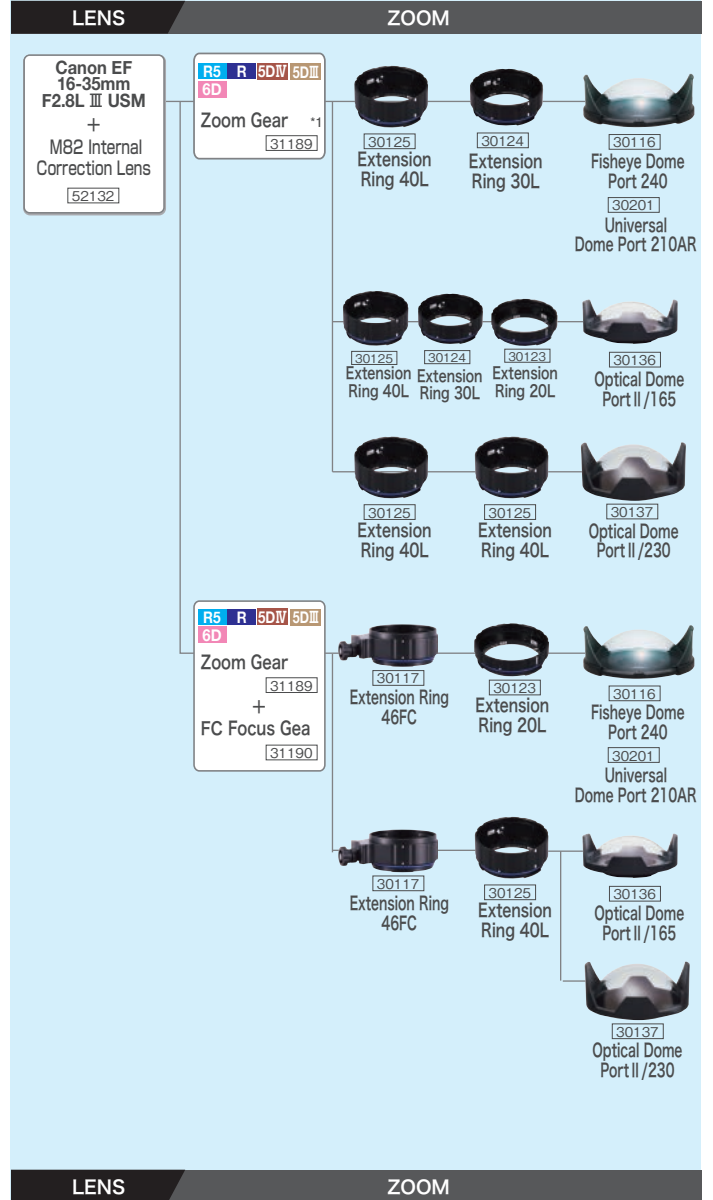
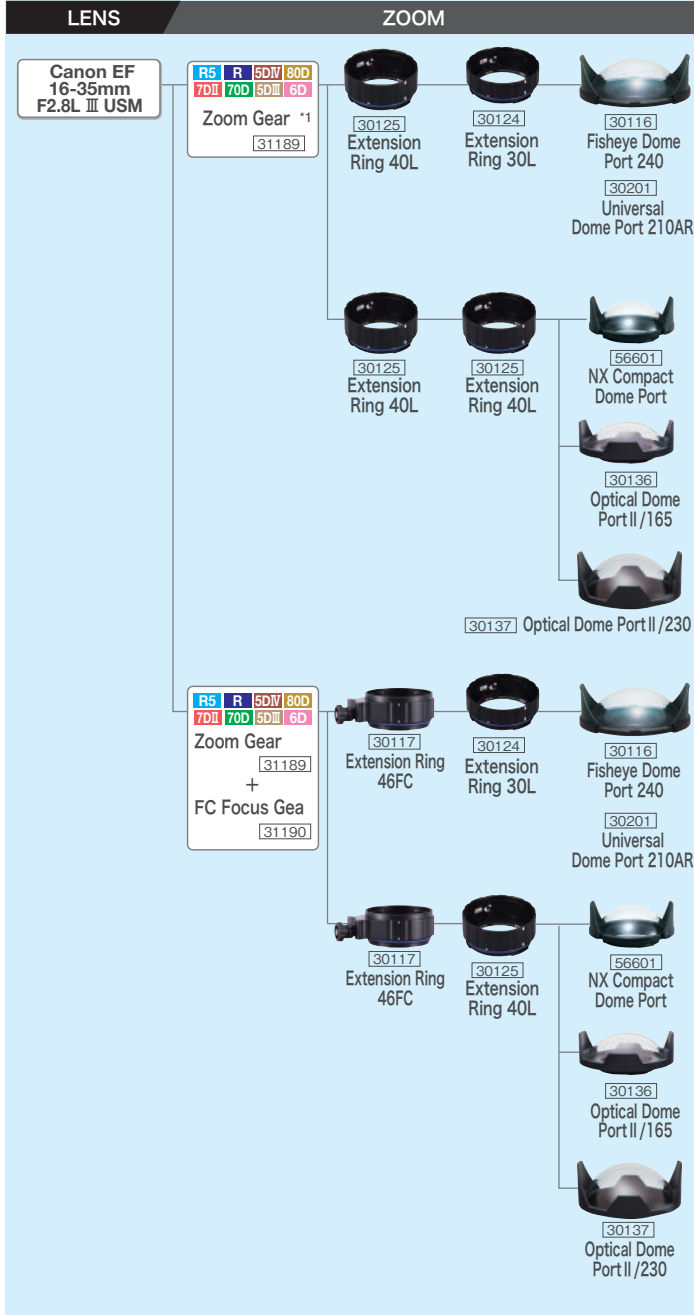
\*4:Either the zoom gear or the focus gear can be mounted on the lens. When the zoom gear is used, manual focus is not possible. When the focus gear is used, the zoom gear cannot be used.

[Notice] Unnecessary reflection may be photographed under some conditions.



# System Chart for MDX Housing for Canon

MDX-R5, MDX-R, MDX-5D MarkIV, MDX-80D, MDX-7D MarkII, MDX-70D, MDX-5D MarkIII, MDX-6D



Housings with the following marks are compatible

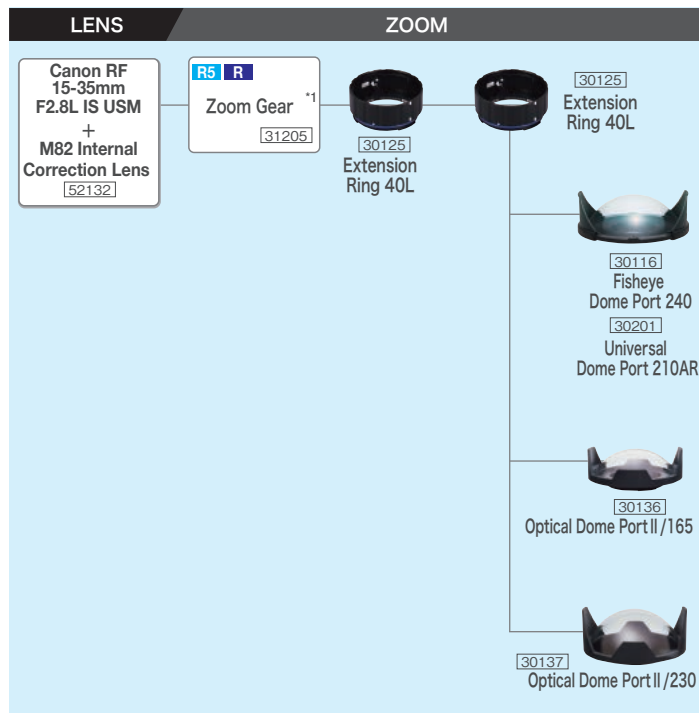
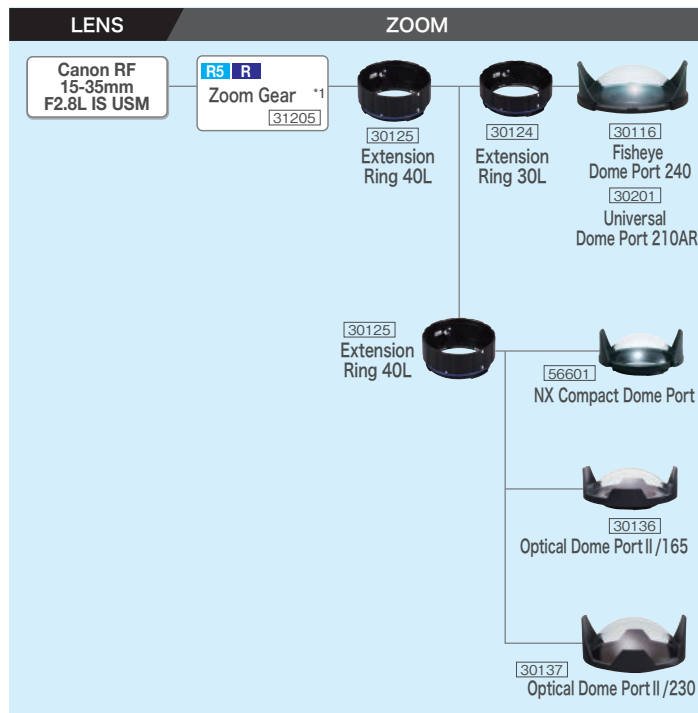
- R5** MDX-R5    **R** MDX-R    **5DIV** MDX-5D Mark IV    **80D** MDX-80D
- 7DII** MDX-7D Mark II    **70D** MDX-70D    **5DIII** MDX-5D Mark III    **6D** MDX-6D

☆ : A close-up lens with M67 mount can be attached to the end of the port.  
 \*1:Manual focus cannot be used. \*2:Auto focus cannot be used.  
 \*3:It may be necessary to remove the dome shades at the widest picture angle so they do not appear in the images.  
 \*4:Either the zoom gear or the focus gear can be mounted on the lens. When the zoom gear is used, manual focus is not possible. When the focus gear is used, the zoom gear cannot be used.

[Notice] Unnecessary reflection may be photographed under some conditions.

# System Chart for MDX Housings for Canon MDX-R5/R

MDX-R5, MDX-R



Housings with the following marks are compatible

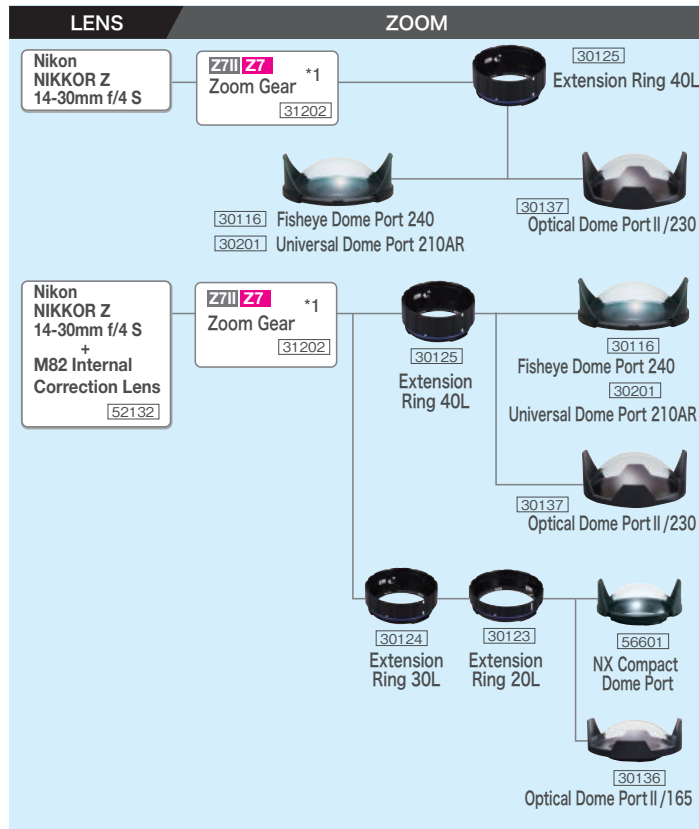
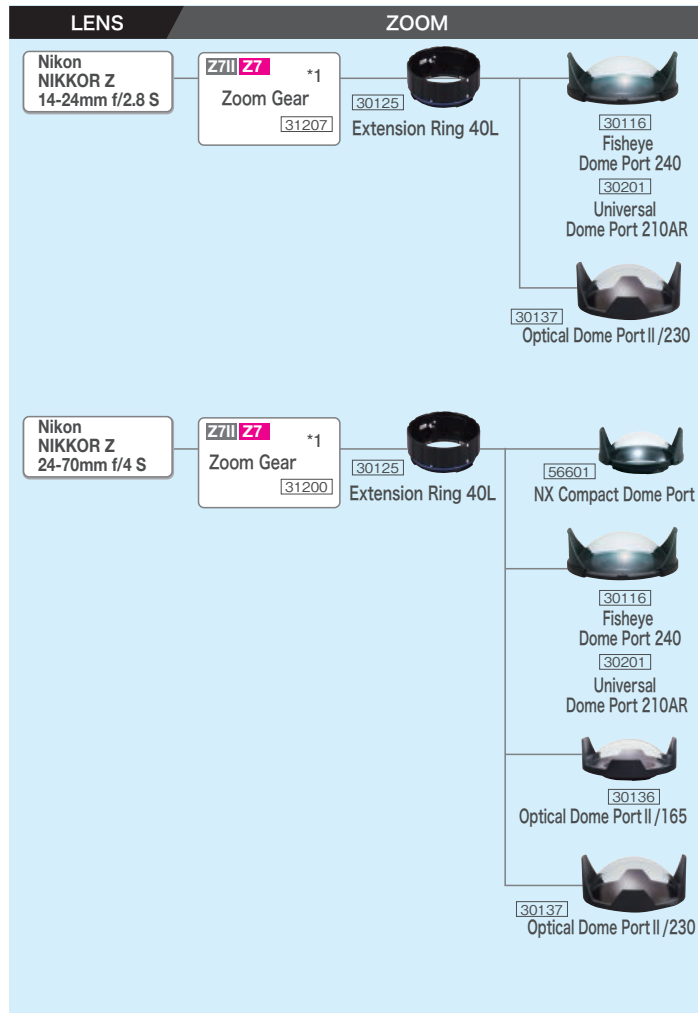
**R5** MDX-R5   **R** MDX-R

\*1: Manual focus cannot be used.

[Notice] Unnecessary reflection may be photographed under some conditions.

# System Chart for MDX Housings for Nikon Z7/Z6/Z7II/Z6II

MDX-Z7, MDX-Z7II



Housings with the following marks are compatible

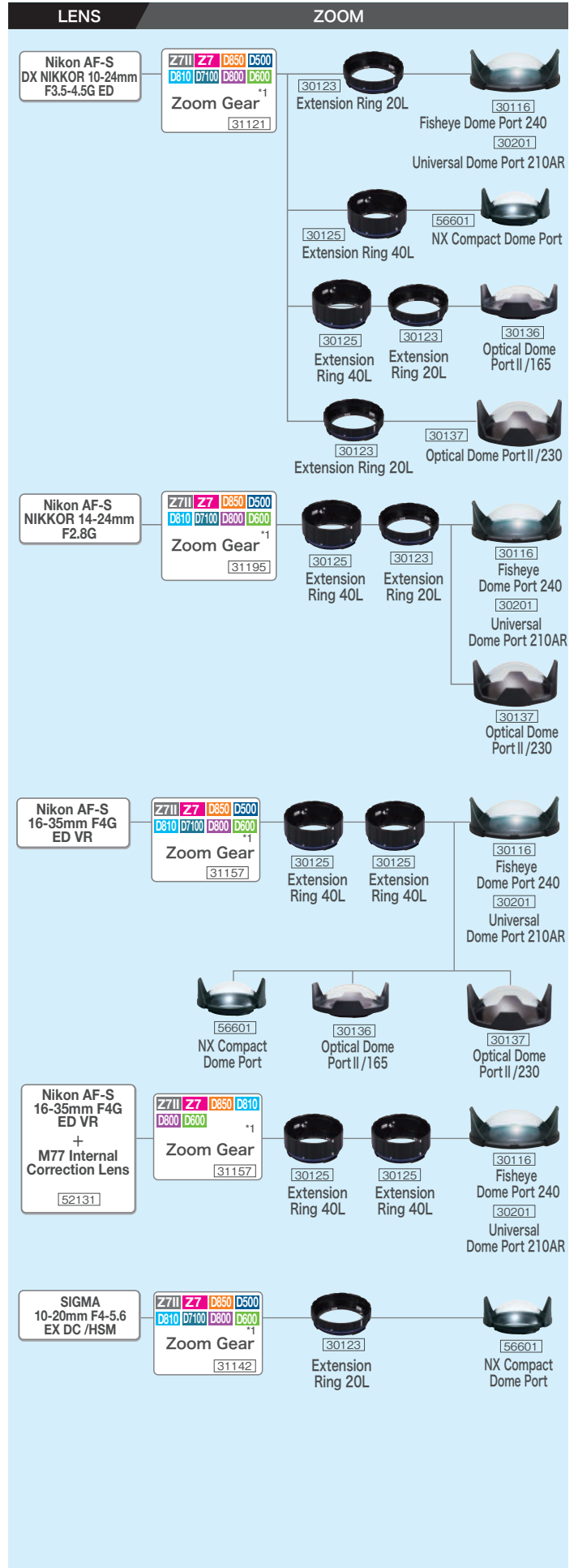
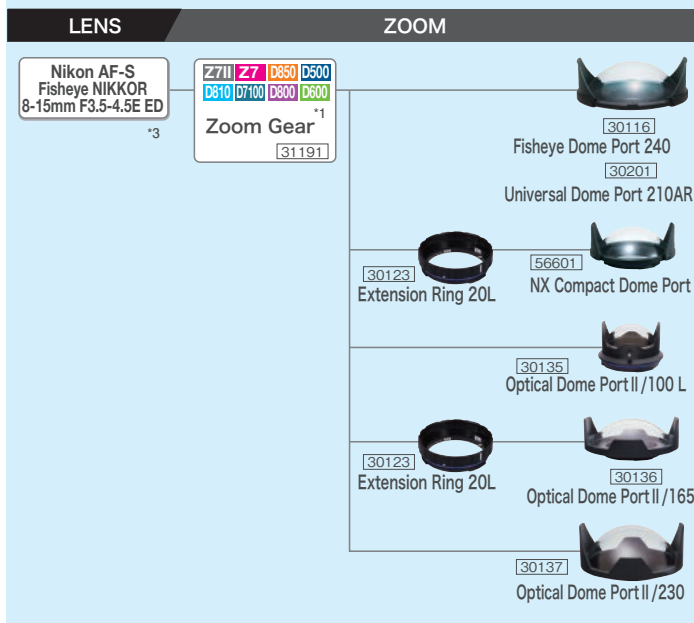
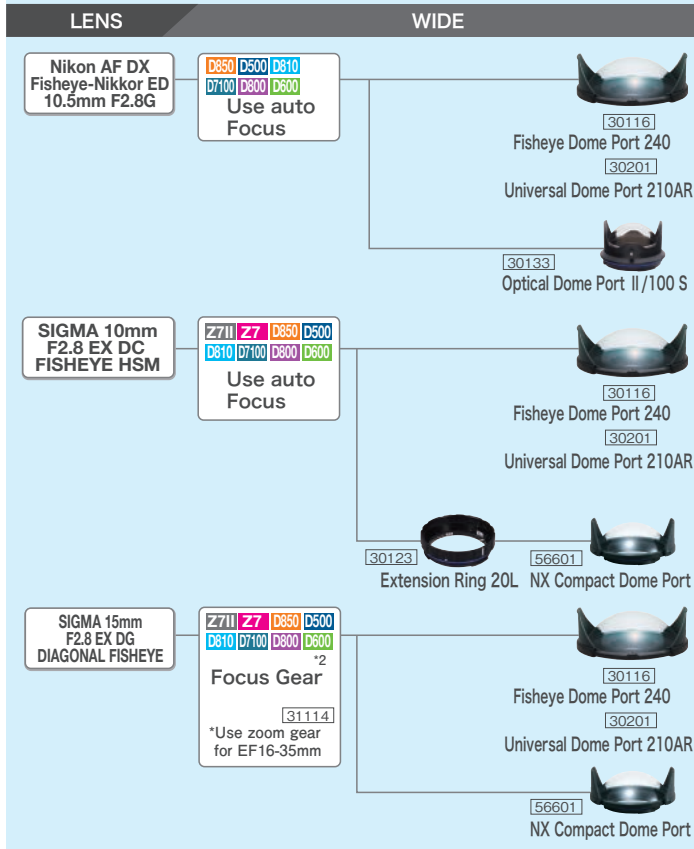
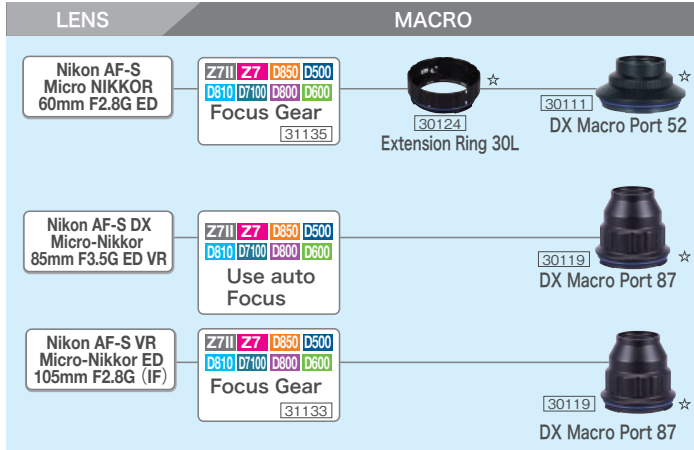
**Z7II** MDX-Z7II   **Z7** MDX-Z7

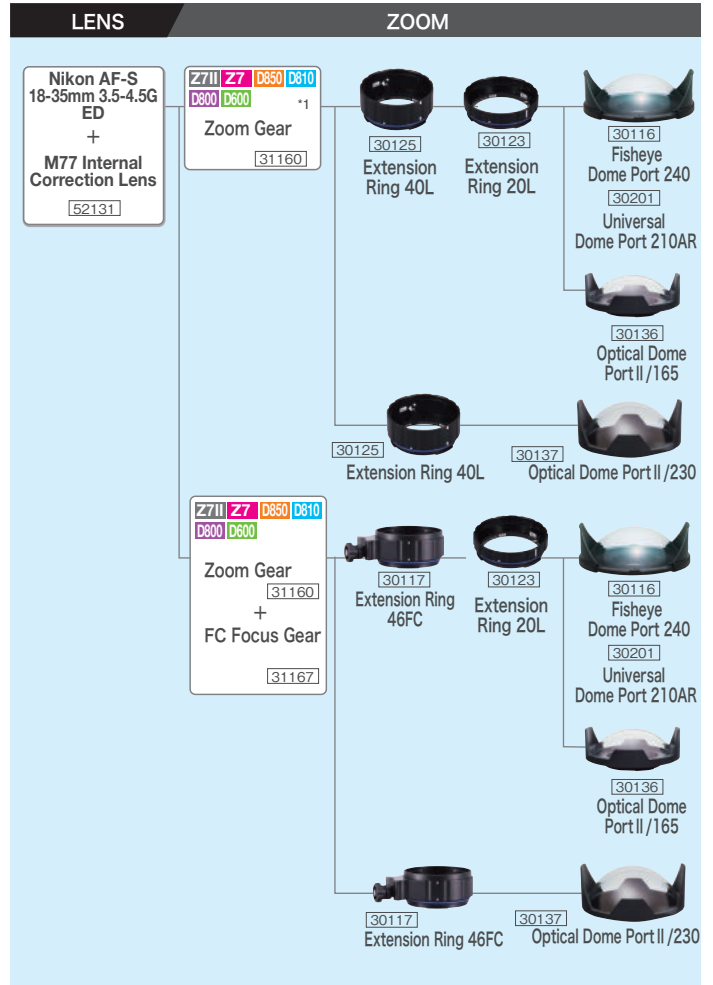
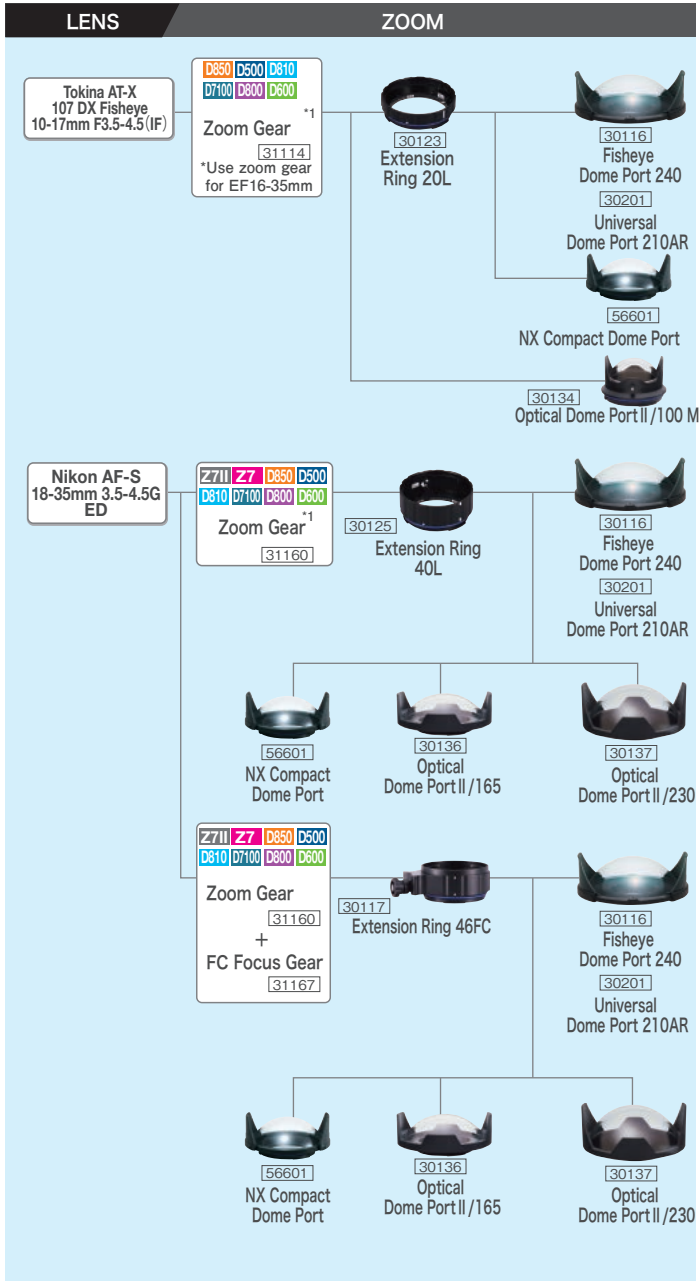
\*1: Manual focus cannot be used.

[Notice] Unnecessary reflection may be photographed under some conditions.

# System Chart for MDX Housing for Nikon

MDX-Z7II, MDX-Z7, MDX-D850, MDX-D500, MDX-D810, MDX-D7100, MDX-D800, MDX-D600





Housings with the following marks are compatible

- Z7II MDX-Z7II    Z7 MDX-Z7    D850 MDX-D850    D500 MDX-D500
- D810 MDX-D810    D7100 MDX-D7100    D800 MDX-D800    D600 MDX-D600

- ☆ : A close-up lens with M67 mount can be attached to the end of the port.
- \*1: Manual focus cannot be used.
- \*2: Auto focus cannot be used.
- \*3: It may be necessary to remove the dome shades at the widest picture angle so they do not appear in the images.

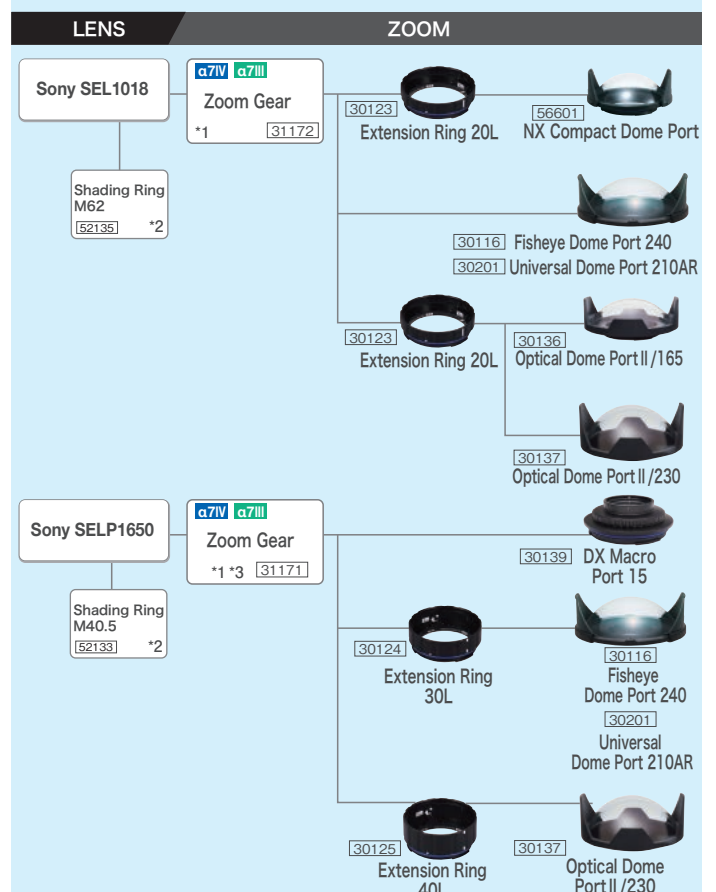
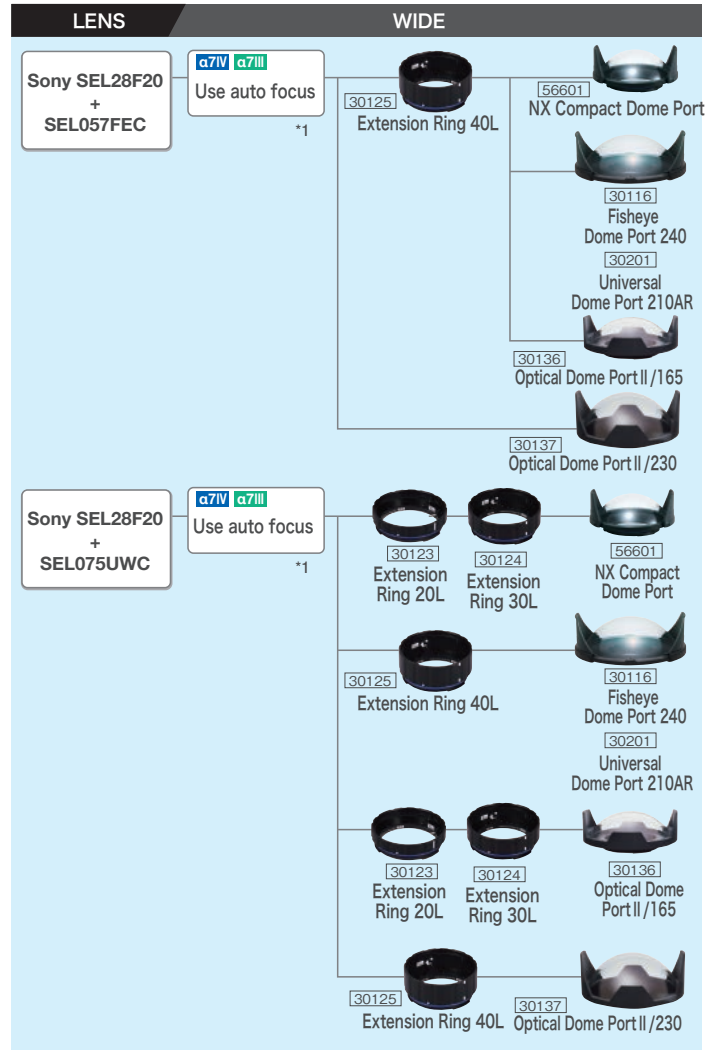
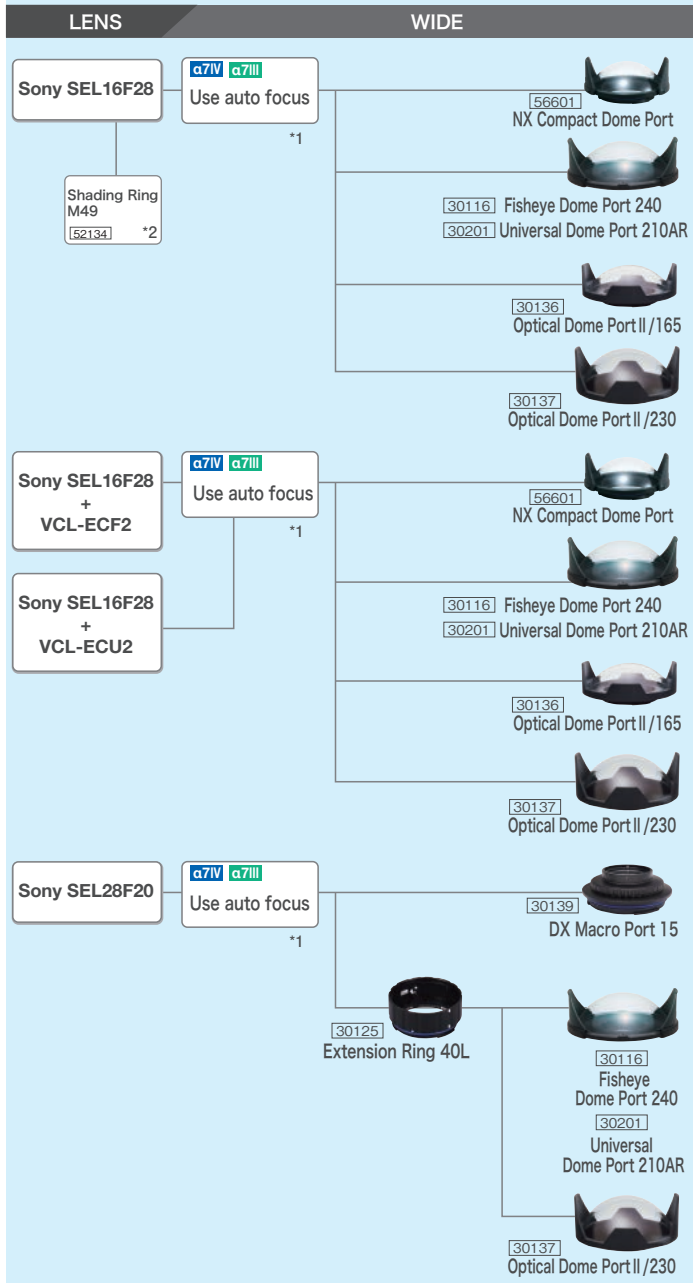
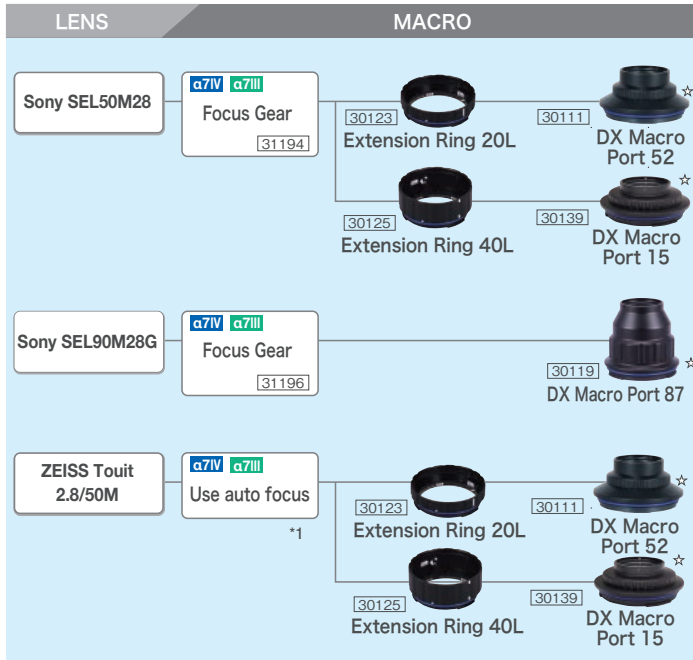
[Notice] Unnecessary reflection may be photographed under some conditions.

Photo : Tep Keerati



# System Chart for MDXL / MDX Mirrorless Housing for Sony

MDXL-α7IV, MDX-α7III



LENS	ZOOM
<p>Canon EF8-15mm F4L Fisheye USM + SIGMA MC-11</p> <p><b>a7IV a7III</b> Use auto focus No zoom gear is available</p> <p>*1</p>	<p>[30124] Extension Ring 30L [56601] NX Compact Dome Port</p> <p>[30116] Fisheye Dome Port 240 [30201] Universal Dome Port 210AR</p> <p>[30123] Extension Ring 20L [30135] Optical Dome Port II/100 L</p> <p>[30124] Extension Ring 30L [30136] Optical Dome Port II/165</p> <p>[30137] Optical Dome Port II/230</p>
<p>Sony SEL1224G</p> <p><b>a7IV a7III</b> Zoom Gear</p> <p>*1 [31198]</p>	<p>[30125] Extension Ring 40L [30116] Fisheye Dome Port 240 [30201] Universal Dome Port 210AR</p> <p>[30123] Extension Ring 20L [30125] Extension Ring 40L [30136] Optical Dome Port II/165</p> <p>[30123] Extension Ring 20L [30124] Extension Ring 30L [30137] Optical Dome Port II/230</p>
<p>Sony SEL1635GM</p> <p><b>a7IV a7III</b> Zoom Gear</p> <p>*1 [31199]</p>	<p>[30125] Extension Ring 40L [30125] Extension Ring 40L [56601] NX Compact Dome Port</p> <p>[30125] Extension Ring 40L [30124] Extension Ring 30L [30116] Fisheye Dome Port 240 [30201] Universal Dome Port 210AR</p> <p>[30125] Extension Ring 40L [30124] Extension Ring 30L [30123] Extension Ring 20L [30136] Optical Dome Port II/165</p> <p>[30125] Extension Ring 40L [30124] Extension Ring 30L [30137] Optical Dome Port II/230</p>

LENS	ZOOM
<p>Sony SEL1635GM + M82 Internal Correction Lens [52132]</p> <p><b>a7IV a7III</b> Zoom Gear</p> <p>*1 [31199]</p>	<p>[30125] Extension Ring 40L [30125] Extension Ring 40L [56601] NX Compact Dome Port</p> <p>[30125] Extension Ring 40L [30124] Extension Ring 30L [30116] Fisheye Dome Port 240 [30201] Universal Dome Port 210AR</p> <p>[30125] Extension Ring 40L [30124] Extension Ring 30L [30123] Extension Ring 20L [30136] Optical Dome Port II/165</p> <p>[30125] Extension Ring 40L [30124] Extension Ring 30L [30137] Optical Dome Port II/230</p>
<p>Sony SEL1635Z</p> <p><b>a7IV a7III</b> Zoom Gear</p> <p>*1 [31197]</p> <p>Shading Ring M72 [52139] *2</p>	<p>[30125] Extension Ring 40L [30124] Extension Ring 30L [56601] NX Compact Dome Port</p> <p>[30123] Extension Ring 20L [30125] Extension Ring 40L [30116] Fisheye Dome Port 240 [30201] Universal Dome Port 210AR</p> <p>[30123] Extension Ring 20L [30124] Extension Ring 30L [30136] Optical Dome Port II/165</p> <p>[30125] Extension Ring 40L [30137] Optical Dome Port II/230</p>

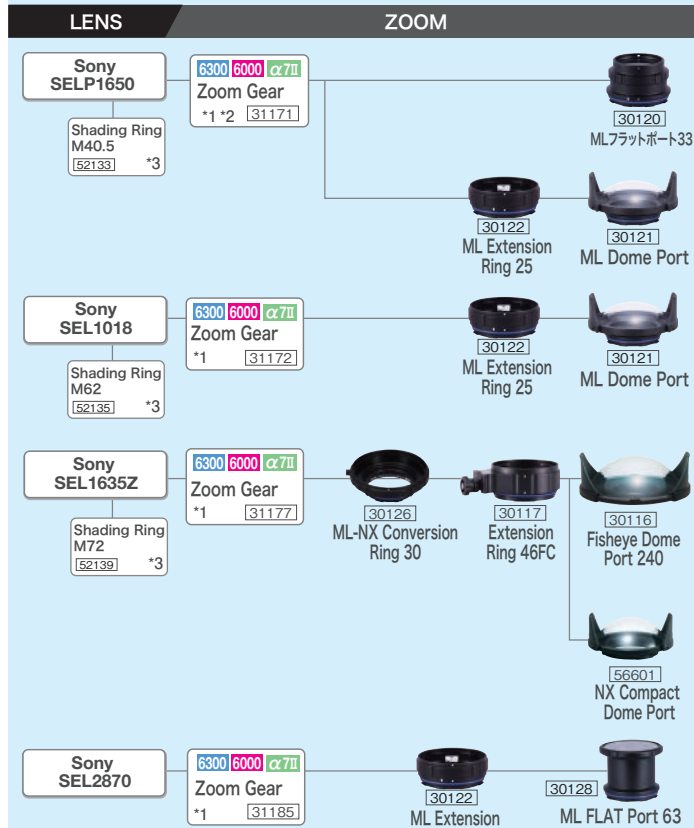
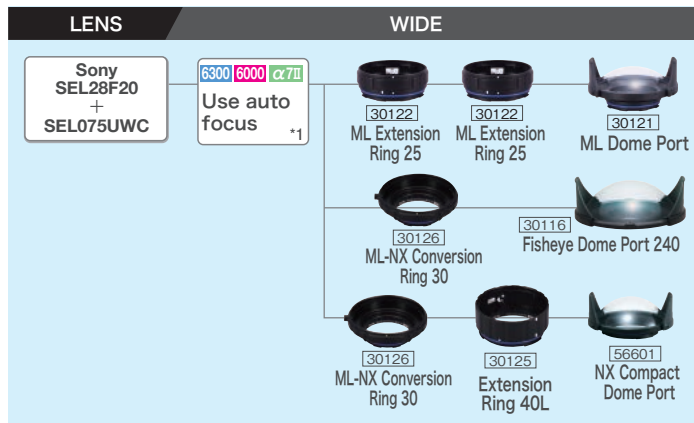
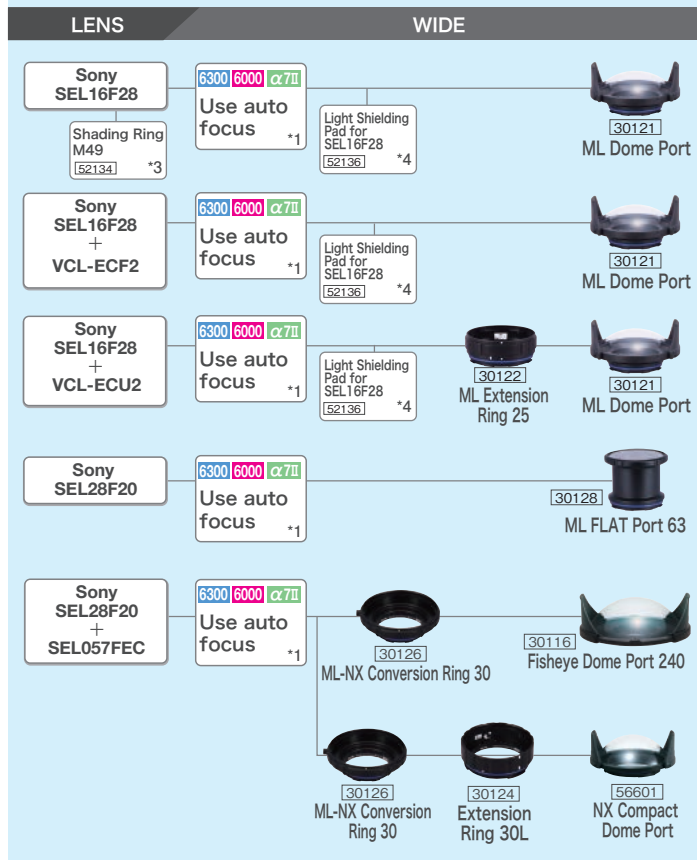
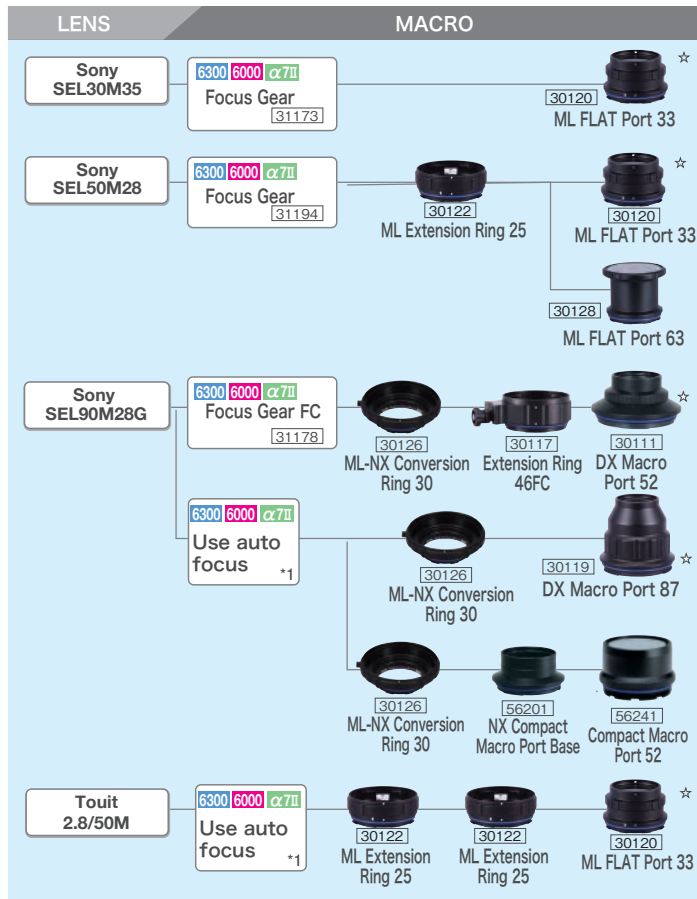
Housings with the following marks are compatible **a7IV** MDX-α 7IV  
**a7III** MDX-α 7III

- ☆ : A close-up lens with M67 mount can be attached to the end of the port.
- \*1: Manual focus cannot be used.
- \*2 The combination will prevent internal light reflections.
- \*3 The power Zoom can be used with accessory spacer.

[Notice] Unnecessary reflection may be photographed under some conditions.

# System Chart for MDX Housing for Sony

MDX-α6300, MDX-α6000, MDX-α7 II



Housings with the following marks are compatible

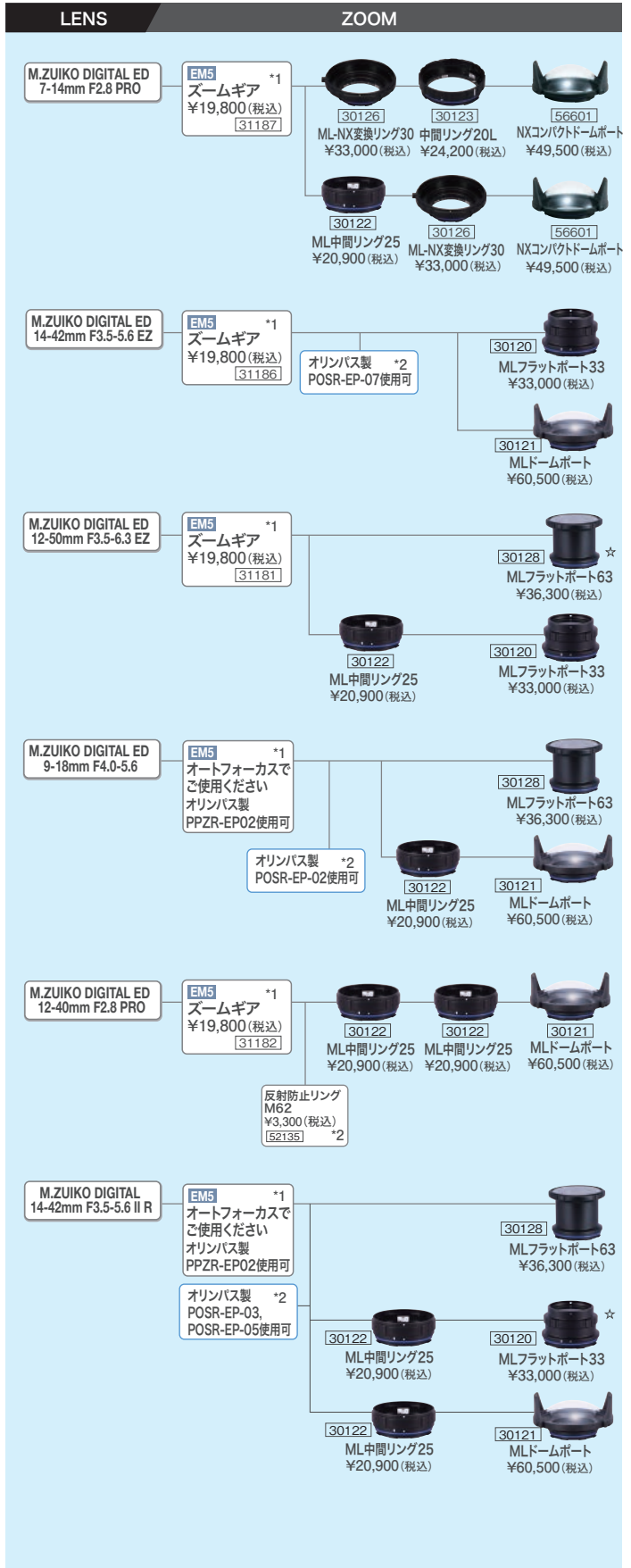
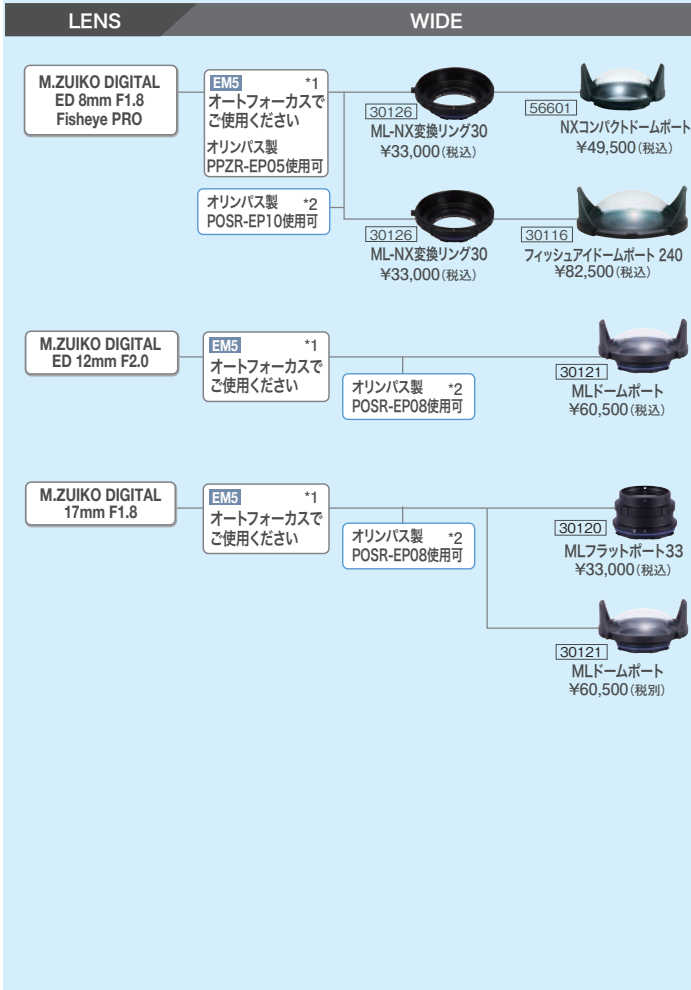
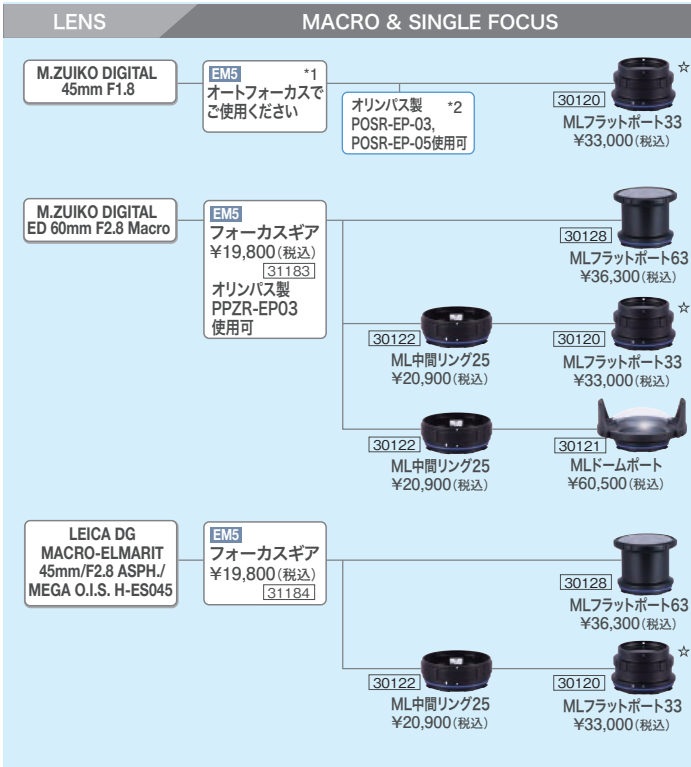
6300 MDX-α6300 6000 MDX-α6000 α7II MDX-α7 II

- ☆ : A close-up lens with M67 mount can be attached to the end of the port.
- \*1: Manual focus cannot be used.
- \*2: The power zoom can be used with the accessory spacer.
- \*3: The combination will prevent internal light reflections from the built-in flash.
- \*4: Light Shielding Sponge, which prevents internal light reflections from the built-in flash.

[Notice] Unnecessary reflection may be photographed under some conditions.

# System Chart for MDX Housing for Olympus

MDX-EM5 MarkII



以下に記載の印がついているハウジングは使用可能です。

EM5 MDX-EM5 Mark II

\*1:マニュアルフォーカスはできません。

\*2:レンズ前部に当たった光がポート内部に反射してゴーストとして現れることを軽減します。

☆:ポート先端にM67径のクローズアップレンズが装着可能です。

[ご注意] 撮影条件によってはレンズ等の写り込みが発生する場合があります。

[ご注意] 掲載のチャートは2021年3月現在のものです。最新のチャートについては、ウェブサイト (<http://www.seaandsea.co.jp>) にてご確認ください。



**SEA&SEA Co., Ltd.**

B1F, TOCAD-Bldg., 1-4-6 Kitasenzoku, Ota-ku, Tokyo 145-0062, JAPAN

TEL. +81-3-5701-5533 / FAX. +81-3-5701-5561

[www.seaandsea.jp](http://www.seaandsea.jp)

- Specifications, external design of products and product features in this catalog may change without notice to improve products.
  - There may be slight differences between actual products and product images in this catalog.
  - The LCD images pictured in this catalog are simulated.
  - The contents in the catalog are current as of March 2021.
  - Company names and products are all trademarks of their respective companies.
  - The use of the photographs, illustrations, and part or all of the text in this catalog without written prior consent is prohibited.
- 2018 ©SEA&SEA All Rights reserved.

**Distributor / Dealer**