



BUYER'S GUIDE 2024

AQUASPHERE

# EYEWEAR

## ADULTS

DEFY.ULTRA	14
VISTA PRO	16
VISTA	18
VISTA XP	20
KAYENNE PRO	22
KAYENNE	24
KAYENNE COMPACT	26
KAIMAN EXO	28
XCEED	30
FASTLANE	32
SEAL 2.0	34
EAGLE	37
KAIMAN	38
KAIMAN COMPACT	40
MAKO	43

## KIDS

VISTA JUNIOR	44
SEAL KID	46
KAYENNE JUNIOR	48

# WETSUITS

RACER.BOOST	54
RACER.FLEX	56
RACER.ACTIVE	58
AQUASKIN	60
STINGRAY	63
SIZE CHARTS	64

# TECHSUITS

BLAST.ULTRA	68
RACER.SPEEDSUIT	70

# SWIMWEAR

ESSENTIALS	76
SIZE CHARTS	81

# SWIM EQUIPMENT & ACCESSORIES

ALL ACCESSORIES	83
-----------------	----





**BEN PROUD**

**YOUR PLAYGROUND.  
YOUR CHALLENGES.  
BE LIMITLESS.**

It's **not just swimming.**

It's about **breaking** your personal barriers and reaching **new horizons.**

It's about **embracing** your individuality while sharing your **PASSION.**

It's the **right** to be **real**, to be **BOLD.**

## **BORN IN 1998**

Inspired by years of working in the scuba diving industry, it took the Italian engineers, P. Ferraro and G. Beltrani, two years of experimenting, testing and prototyping to finally patent the first curved lens with no visibility distortion: the Seal swim mask.

## **FROM CREATIVE** *INGENUITY TO PERFORMANCE*

Sharpened over more than 30 years of research, Aquaphere's craftsmanship excellence is based on purposefully advanced and patented technologies, high-quality materials and driven by our swimming community.

## **AUTHENTIC** *PASSION*

Whatever the playground, we gear the free-spirited swimmer and celebrate each individual in their pursuit of achievement.

# NEW THIS SEASON

LIMITED EDITION







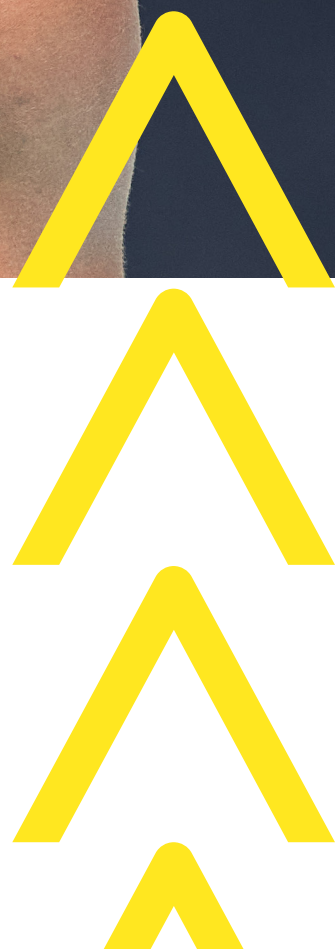
# EYEWEAR

## **CHALLENGE** *DRIVEN*

Our passion for purposeful driven and innovative swim eyewear, keeps inspiring us to elevate our products to enhance our swimmers experience.

## **MADE IN** *ITALY*

Through our in-house R&D Department and manufacturing facilities based in Italy, we design and craft swim eyewear that combine performance, reliability and comfort.



# Lens for EVERY CONDITION



light transmission  
27%-78%

## > PHOTOCROMATIC

SILVER  
TITANIUM

> MIRRORED

light transmission  
8%-13%\*

BROWN

> POLARIZED

light transmission  
11%

YELLOW  
TITANIUM

> MIRRORED

light transmission  
9%-12%\*

ORANGE  
TITANIUM

> MIRRORED

light transmission  
23%

PINK  
TITANIUM

> MIRRORED

light transmission  
24%

INDIGO  
TITANIUM

> MIRRORED

light transmission  
16%-26%\*

BLUE  
TITANIUM

> MIRRORED

light transmission  
18%-27%\*

RED  
TITANIUM

> MIRRORED

light transmission  
20%-43%\*

## > SMOKE

light transmission  
27%-53%\*

RED  
IRIDESCENT

> MIRRORED

light transmission  
48%

PINK  
IRIDESCENT

> MIRRORED

light transmission  
50%

BLUE

> TINTED

light transmission  
58%

## > CLEAR

light transmission  
88%-92%\*

\*depending on the model

# LENS TECHNOLOGY

A full assortment of performance-engineered lenses in a wide range of tints to enhance our swimmers experience.



## PHOTOCHROMATIC



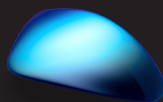
- Adapts to all conditions
- Changes with level of UV
- Improves visual comfort
- VLT : 27% to 78%



## SILVER TITANIUM MIRRORED



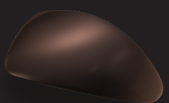
- Ultimate light protection
- Keeps neutral color
- Reduced eye strain
- VLT : 8% - 13%
- Lens base : Smoke



## BLUE TITANIUM MIRRORED



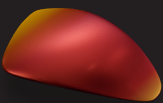
- Increased glare reduction
- Enhanced yellow and orange tints
- Greater visual acuity
- VLT : 18% - 27%
- Lens base : Smoke



## BROWN POLARIZED



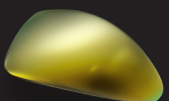
- Ultimate glare cut
- Reduced eye strain
- Improved visual acuity
- Enhanced warm tints
- VLT : 11%
- Lens base : Clear



## RED TITANIUM MIRRORED



- Enhanced depth perception
- Reduced color saturation
- Reduced eye strain
- VLT : 20% - 43%
- Lens base : Smoke



## YELLOW TITANIUM MIRRORED



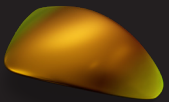
- Ultimate light protection
- Reduced glare
- Enhanced contrast
- Enhanced blue tints
- VLT : 9% - 12%
- Lens base : Smoke



## SMOKE



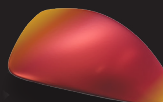
- Increased light protection
- Maintains natural color saturation
- VLT : 27% - 53%



## ORANGE TITANIUM



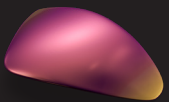
- Enhanced sharpness
- Greater visual definition
- VLT : 23%
- Lens base : Smoke



## RED IRIDESCENT MIRRORED



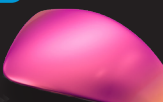
- Enhanced depth perception
- Reduced eye strain
- Keeps natural contrasts
- VLT : 48%
- Lens base : Pink



## PINK TITANIUM MIRRORED



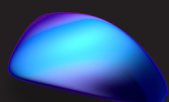
- Increased shape definition
- Reduced color saturation
- Enhanced blue and green tints
- VLT : 24%
- Lens base : Smoke



## PINK IRIDESCENT MIRRORED



- Increased visual clarity
- Brighten up the vision
- VLT : 50%
- Lens base : Pink



## INDIGO TITANIUM MIRRORED



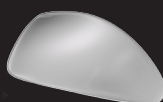
- Increased glare reduction
- Enhanced yellow and orange tints
- Greater visual acuity
- VLT : 16% - 26%
- Lens base : Smoke



## BLUE TINTED



- Improved color perception
- Keeps visual comfort
- VLT : 58%



## CLEAR



- Transmits natural light
- Maximized clarity
- VLT : 88% - 92%

Light Transmission may vary depending on skus.  
VLT : Visual Light Transmission

	CLEAR	TINTED	IRIDESCENT		PHOTO CHROMATIC	SMOKE	POLARIZED	TITANIUM MIRRORED							
			PINK	RED				PINK	RED	INDIGO	BLUE	ORANGE	YELLOW	SILVER	
<b>CONDITIONS</b>															
 <b>DEFY.ULTRA</b>															
 <b>VISTA PRO</b>															
 <b>VISTA</b>															
 <b>VISTA XP</b>															
 <b>KAYENNE PRO</b>															
 <b>KAYENNE</b>															
 <b>KAYENNE COMPACT</b>															
 <b>KAIMAN EXO</b>															
 <b>XCEED</b>															
 <b>FASTLANE</b>															
 <b>SEAL 2.0</b>															
 <b>EAGLE</b>															
 <b>KAIMAN</b>															
 <b>KAIMAN COMPACT</b>															
 <b>MAKO</b>															
 <b>VISTA JR</b>															
 <b>SEAL KID</b>															
 <b>KAYENNE JR</b>															

# LENS FEATURES



A combined spherical and cylindrical lens for revolutionary distortion-free panoramic vision. Lateral and vertical sight like never before.

**AVAILABLE FOR: DEFYULTRA**



## **CURVED LENS**

Premium optical engineering and three critically placed radii let you experience a wide field of vision.



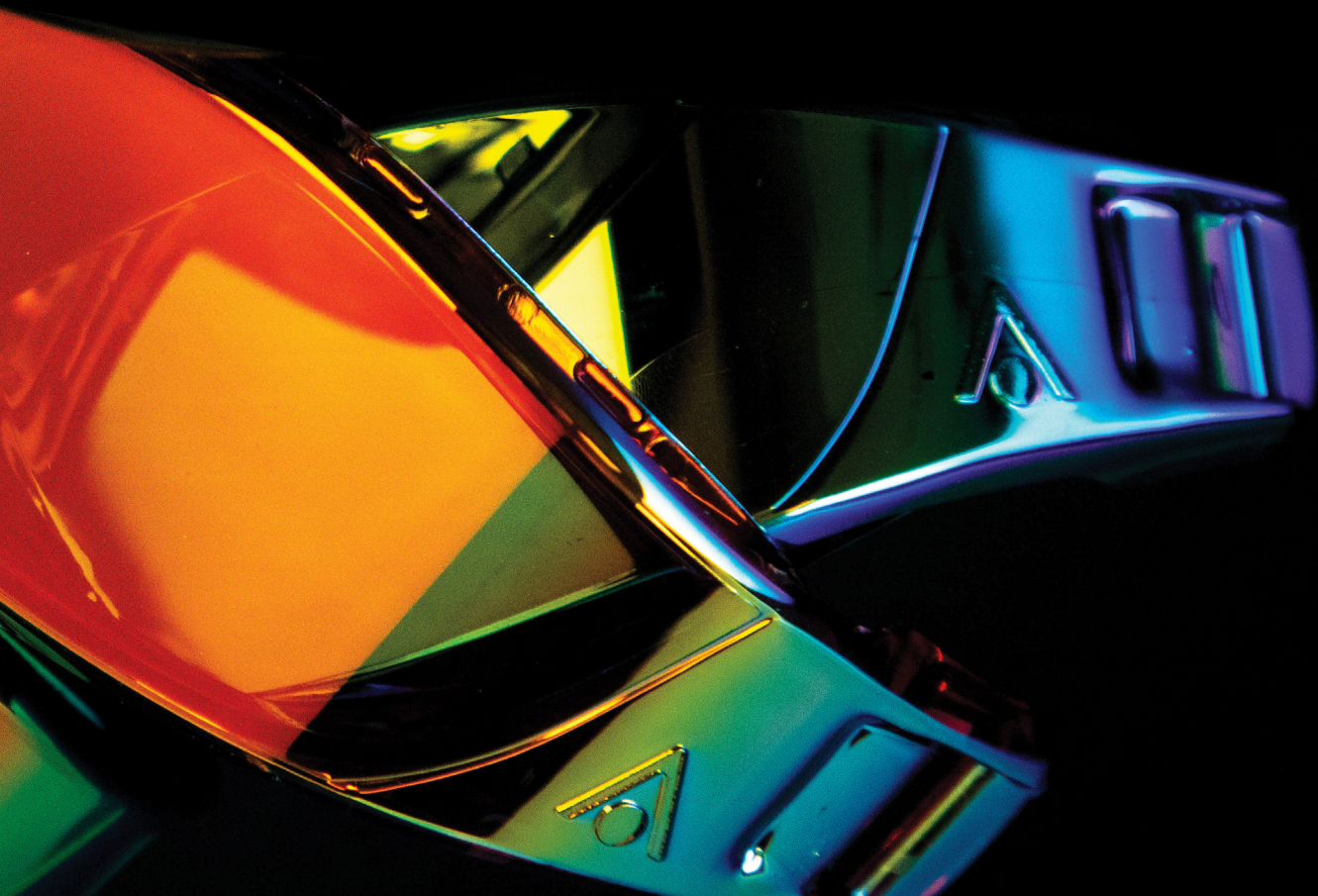
## **ANTI-FOG**

Durable anti-fog treatment for guaranteed clearer vision. Use our eco-friendly anti-fog solution Sea-Clr Antifog spray for extra protection.



## **LIGHT PROTECTION**

Embedded within the lens material (polycarbonate and plexisol), the properties of our lenses protect your eyes from harmful rays.



# FRAME FEATURES



Cool silicone injected directly onto the lens creates an ultra-light frameless construction for a ground-breaking hydrodynamic shape.

**AVAILABLE FOR: DEFYULTRA**



## PRECISION FIT TECHNOLOGY

Ultra-thin silicone provides the perfect fit, contouring to every face shape for a comfortable, leak-free seal.

**AVAILABLE FOR: DEFYULTRA**



## ADVANCED FIT TECHNOLOGY

The dual texture and dual-density soft grip on the face reduces skin marks while ensuring a watertight seal for focused performance.

**AVAILABLE FOR: VISTA PRO, KAYENNE PRO, KAIMAN EXO, SEAL 2.0**



Bi-material frame technology combines exceptional stability with maximum comfort. A semi-rigid exoskeleton protects the lens with an integrated structure, while the ultra-soft Softeril material creates a streamlined, lightweight design.

**AVAILABLE FOR: XCEED, KAIMAN EXO.**



## ADJUSTABLE NOSE BRIDGE

The adjustable nose bridge ensures a snug, leak-free seal that adapts to any face shape.

**AVAILABLE FOR: KAYENNE PRO, XCEED, FASTLANE.**



## QUICK FIT BUCKLE 2.0

An integrated rotating buckle attaching the strap to the lens for a quick and efficient fine-tuned fit.

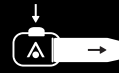
**AVAILABLE FOR: DEFYULTRA**



## PIVOTING BUCKLE

An adjustable, rotating buckle ensures the fit every time for any head shape.

**AVAILABLE FOR: VISTA PRO**



## QUICK FIT

Easy push button to tighten or loosen your goggles while still wearing them.

**AVAILABLE FOR: VISTA PRO, VISTA, VISTA XP, KAYENNE PRO, KAYENNE, KAYENNE COMPACT, VISTA JUNIOR**



## E-Z ADJUST

Low profile strap allows for precise adjustment. Simply pull the straps back to your desired level of tension for a leak free fit or lift the buckle tabs and pull the goggle forward to loosen.

**AVAILABLE FOR: KAIMAN EXO, KAIMAN, KAIMAN COMPACT SEAL 2.0, MAKO, KAYENNE JUNIOR, EAGLE, SEAL KID**

# DEFY.Ultra



**PERFORMANCE**

reddot winner 2023

# INFINITE VISION



 **SUNNY**

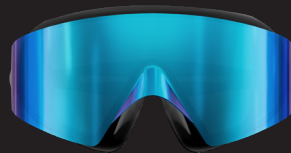


>>> **MS5420171LMY** <<<

**YELLOW TITANIUM MIRRORED**

DEFY. ULTRA BLACK BRIGHTYELLOW LMY

V.L.T : 12%



>>> **MS5420171LMB** <<<

**INDIGO TITANIUM MIRRORED**

DEFY. ULTRA BLACK BRIGHTYELLOW LMB

V.L.T : 26%

 **PARTIALLY  
SUNNY**



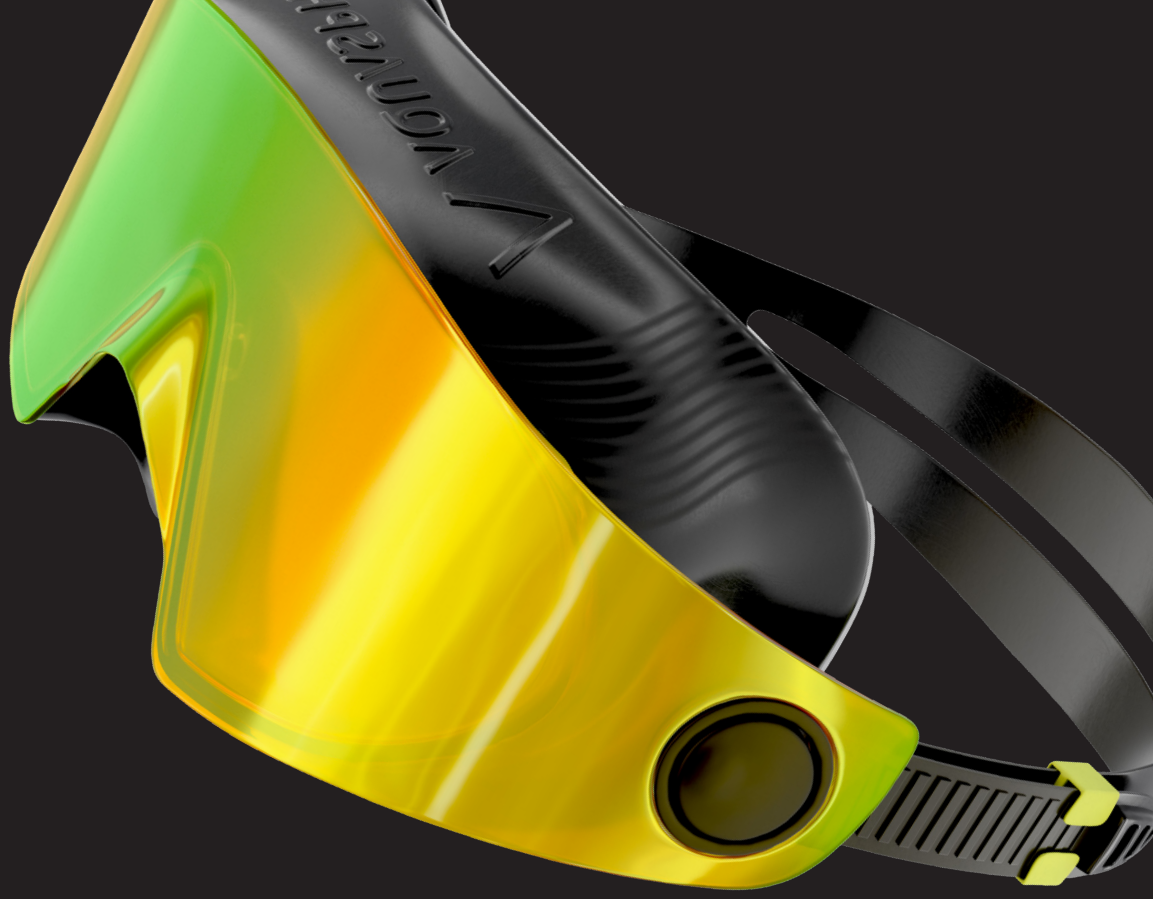
>>> **MS5420171LD** <<<

**SMOKE**

DEFY. ULTRA BLACK BRIGHTYELLOW LD

V.L.T : 30%

>>> Experience infinite vision and conquer open waters with the Defy.Ultra. Our new swim mask features an all-new DuoCurve lens, offering panoramic vision both laterally and vertically, ultra-thin silicone Precision Fit Technology skirt for a comfortable, leak-free seal and a groundbreaking ultra-light frameless design thanks to our Cool Inject Technology for reduced drag in the water. Prepare to lock in your new personal best time with a low-profile hydrodynamic design and the Quick Fit Buckle 2.0 on the strap.



## DUOCURVE

- Revolutionary combination of spherical and cylindrical curved lenses.
- Enhances panoramic vision & provides distortion-free clarity.

## COOLINJECT FRAMELESS

- Innovative technique : cool silicone injected directly onto the lens, creating an ultralight frameless construction.
- Increases hydrodynamics and reduces drag.



### >>> OTHER FEATURES:



**LOW PROFILE**  
Wider field of vision.



**P·F·T PRECISION FIT TECHNOLOGY**  
Ultra-thin silicone for ultimate fit and comfort.



**QUICK FIT BUCKLE 2.0**  
Quick and secure adjustment.



**THERMOFORMED NOSE PIECE**  
Reduced drag.



**LATEX FREE** **MADE IN ITALY**

# VISTA**PRO**

## PERFORMANCE

>>> Designed with the Open Water Adventure Swimmer in mind, the Vista Pro offers great field of vision through its curved single lens. Utilising Advanced Fit Technology (AFT) into our silicone skirt to offer best fit and comfort for a wide range of faces. The buckle system integrates a pivoting technology providing two important benefits: structural stability and fit.



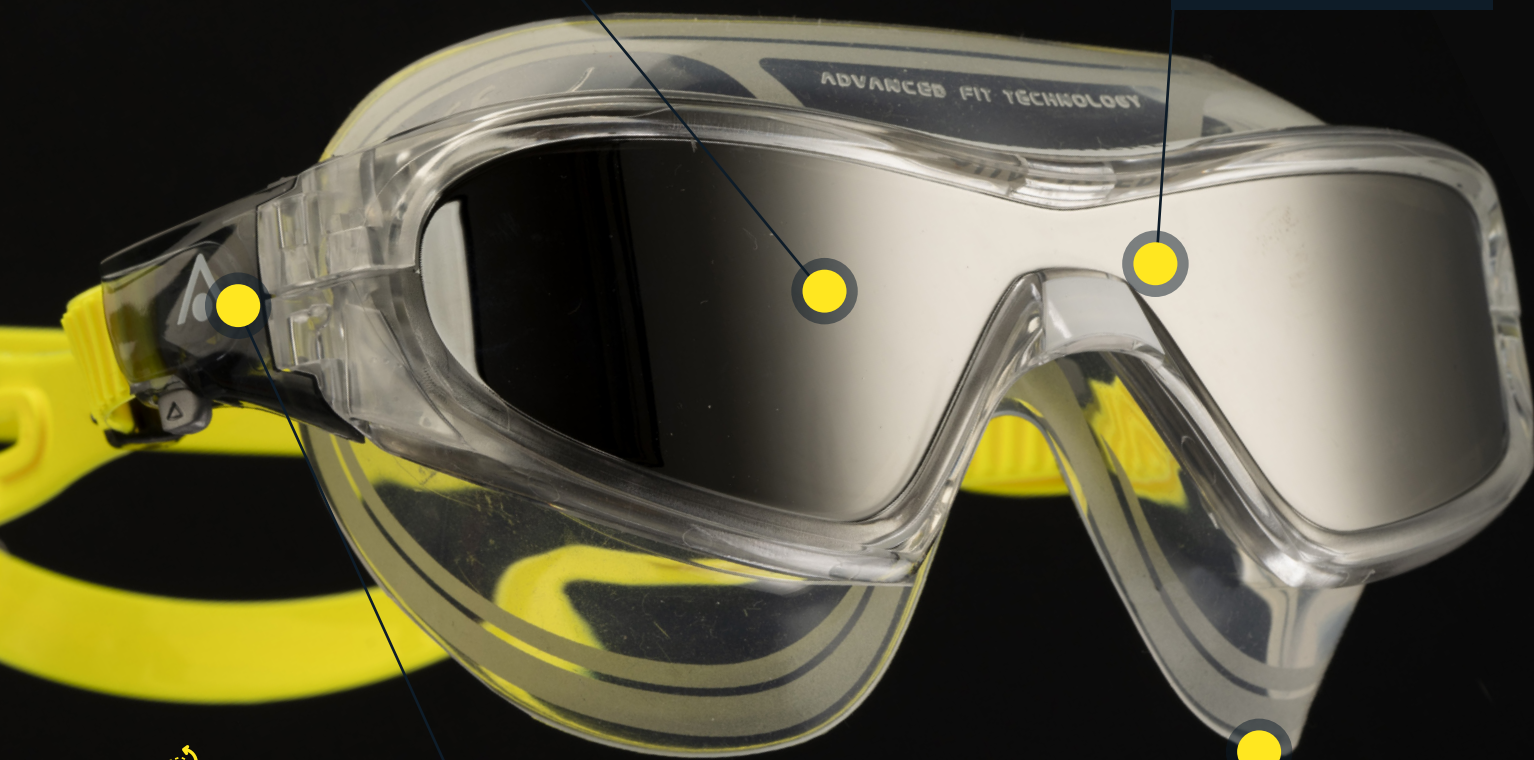
### SINGLE LENS

*Provides wide field of vision*

### A·F·T

#### AFT: ADVANCED FIT TECHNOLOGY

*Provides a leak resistant seal*



### PIVOT BUCKLE STRAP SYSTEM

*Adjusts to the shape of your head*

### SILICONE

#### COMFORTABLE SKIRT

*For comfort and a better fit*



**LATEX FREE** **MADE IN ITALY**

### >>> OTHER FEATURES:

- Quick fit buckle
- Antiscratch

 **SUNNY**



>>> **MS5590007LMS** <<<

**SILVER TITANIUM MIRRORED**

VISTA PRO.A1 CL YLW LMS

**V.L.T : 13%**



>>> **MS5591208LMB** <<<

**INDIGO TITANIUM MIRRORED**

VISTA PRO.A1 DK GRY ORG LMB

**V.L.T : 16%**



>>> **MS5591201LMO** <<<

**ORANGE TITANIUM MIRRORED**

VISTA PRO.A1 DGY BLK LMO

**V.L.T : 23%**

# VISTA

**ACTIVE**

>>> Popular with Open Water Swimmers ready for a challenge, the Vista is a durable silicone mask made for unpredictable environments. Vista's low profile reduces the drag experienced with other swimming masks. With its soft silicone skirt, and quick fit buckle, you are ensured a comfortable, custom fit so you can focus on your swim, not your gear.



**QUICK FIT BUCKLE**

*Provides perfect fit & easy adjustments*

**SILICONE**

**COMFORTABLE SKIRT**

*Assures leak resistant seal*



**CURVED LENS GEOMETRY**

*Provides wide field of vision*



**LATEX FREE** **MADE IN ITALY**

>>> **OTHER FEATURES:**

- Distortion free vision
- Antiscratch

 **SUNNY**



>>> **MS5601208LMB** <<<

**INDIGO TITANIUM MIRRORRED**

VISTA.A1 DK GRY ORG LMB

V.L.T : 16%



>>> **MS5600915LMR** <<<

**RED TITANIUM MIRRORRED**

VISTA.A1 WHITE RED LMR

V.L.T : 20%

 **PARTIALLY  
SUNNY**



>>> **MS5600915LD** <<<

**SMOKE**

VISTA.A1 WHITE RED LD

V.L.T : 27%



>>> **MS5600916LD** <<<

**SMOKE**

VISTA.A1 WHITE RASPBERRY LD

V.L.T : 27%



>>> **MS5600012LD** <<<

**SMOKE**

VISTA.A1 TRP DGY LD

V.L.T : 27%

 **INDOOR  
CLOUDY**



>>> **MS5600915LC** <<<

**CLEAR**

VISTA.A1 WHITE RED LC

V.L.T : 88%



>>> **MS5600916LC** <<<

**CLEAR**

VISTA.A1 WHITE RASPBERRY LC

V.L.T : 88%



>>> **MS5600012LC** <<<

**CLEAR**

VISTA.A1 TRP DGY LC

V.L.T : 88%



>>> **MS5604340LC** <<<

**CLEAR**

VISTA.A1 TBL BLU LC

V.L.T : 88%

# VISTA XP

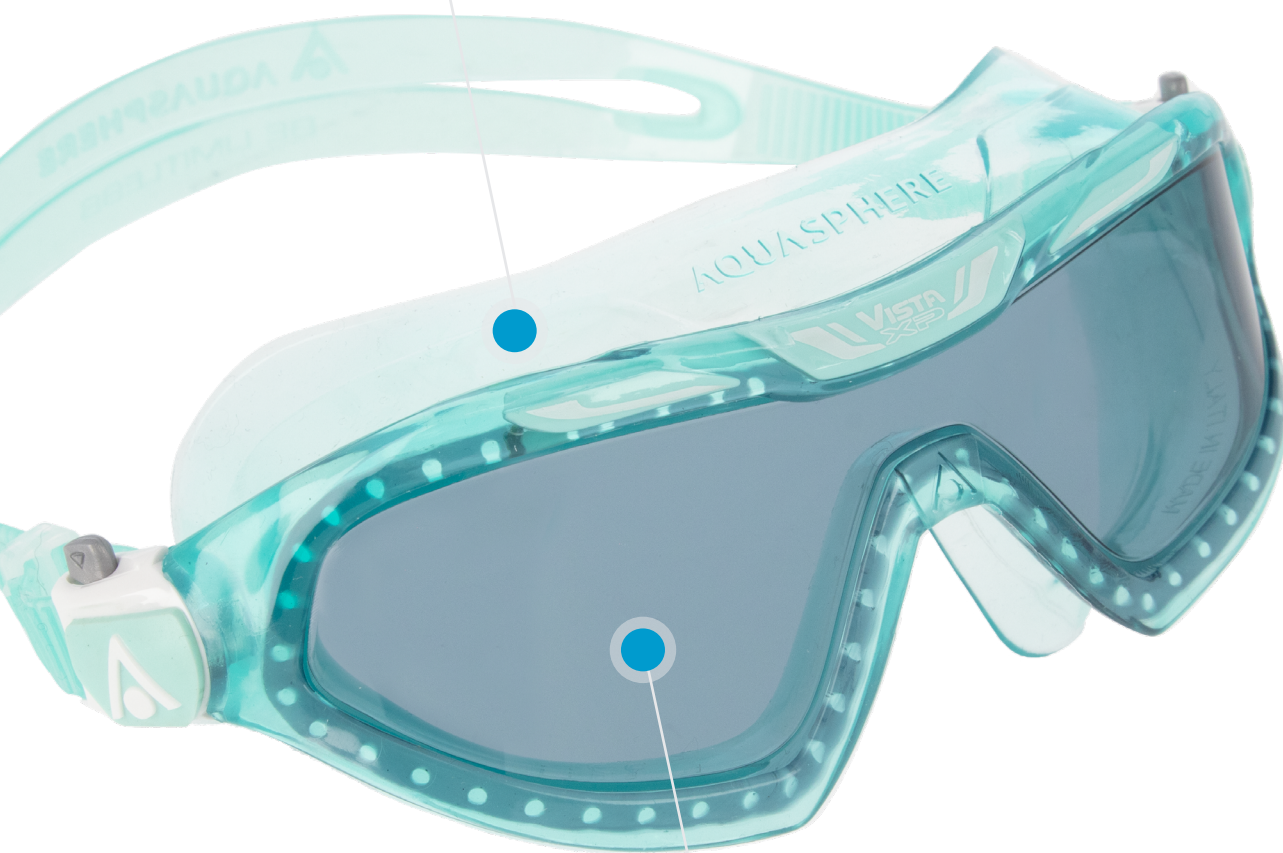
**ACTIVE**

>>> The Vista XP swim mask is the perfect addition to your open water training. Take off with confidence thanks to the ultra-flexible Softeril skirt, providing a secure seal and ensuring you lasting comfort during both quick and long swim sessions. Experience visual clarity and a wide field of vision under the water with the single lens, as well as quick and easy adjustments using the Quick Fit buckle.

## SOFTERIL

### ULTRA SOFT SKIRT

*For maximum comfort*



### SINGLE LENS

*Provides wide field of vision*



**LATEX FREE** **MADE IN ITALY**

### >>> OTHER FEATURES:

- Antiscratch
- Softeril contains TPR

**PARTIALLY  
SUNNY**



>>> **MS5640001LD** <<<

**SMOKE**

VISTA XPA1 TRP BLACK LD  
V.L.T : 27%



>>> **MS5643535LD** <<<

**SMOKE**

VISTA XPA1 TINTED GREEN LD  
V.L.T : 27%

**INDOOR  
CLOUDY**



>>> **MS5644009LC** <<<

**CLEAR**

VISTA XPA1 BLUE WHITE LC  
V.L.T : 92%



>>> **MS5640006LC** <<<

**CLEAR**

VISTA XPA1 TRP RED LC  
V.L.T : 92%



>>> **MS5643535LC** <<<

**CLEAR**

VISTA XPA1 TINTED GREEN LC  
V.L.T : 92%

# KAYENNE PRO

## PERFORMANCE

>>> The Kayenne Pro, featuring an adjustable nose bridge with 4 interchangeable sizes and a superior fitting AFT leak-resistant seal, is perfect for any triathlete looking to up their game. Keep markers in sight using Curved Lens Geometry technology and our oversized Plexisol lens for an exceptional peripheral vision with increased upper visibility. Start every race with confidence thanks to the high performance ultra-light frame and a Quick Fit Buckle.

### A·F·T

#### AFT: ADVANCED FIT TECHNOLOGY

Provides a leak resistant seal



#### QUICKFIT BUCKLE

Provides perfect fit & easy adjustments



#### ADJUSTABLE NOSE BRIDGE

With 4 interchangeable size options for a perfect fit



#### CURVED LENS GEOMETRY

Provides wide field of vision



LATEX FREE MADE IN ITALY

#### >>> OTHER FEATURES:

- Ultra soft softeril skirt: for maximum comfort, softeril contains TPR
- Oversized plexisol lens: increase upper visibility
- Wide gasket: improve stability
- Antiscratch



**PARTIALLY SUNNY**  
CLOUDY

ADAPTIVE V.L.T



**EP3210171LPH**

**PHOTOCHROMATIC**

KAYENNE PRO.A1 BLK BR. YLW LPH

V.L.T : 27% to 78%

**SUNNY**



>>> **EP3210910LP** <<<

**BROWN POLARIZED**

KAYENNE PRO.A1 WHT GRY LPB

V.L.T : 11%



>>> **EP3210707LMY** <<<

**YELLOW TITANIUM MIRRORRED**

KAYENNE PRO.A1 YLW YLW LMY

V.L.T : 11%



>>> **EP3210010LMS** <<<

**SILVER TITANIUM MIRRORRED**

KAYENNE PRO.A1 TRP GRY LMS

V.L.T : 13%

**PARTIALLY SUNNY**



>>> **EP3210707LD** <<<

**SMOKE**

KAYENNE PRO.A1 YLW YLW LD

V.L.T : 27%



>>> **EP3210010LD** <<<

**SMOKE**

KAYENNE PRO.A1 TRP GRY LD

V.L.T : 27%

**INDOOR CLOUDY**



>>> **EP3210010LC** <<<

**CLEAR**

KAYENNE PRO.A1 TRP GRY LC

V.L.T : 92%

# KAYENNE

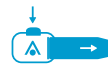
**ACTIVE**

>>> Whether you're racing or training, the Kayenne is designed to help you reach your goals in the water using a unique, oversized lens design with expanded vision and a low-profile micro-frame. Save valuable seconds with our Quick Fit Buckle offering easy one-touch strap adjustments, and guarantee your perfect position thanks to the Stabilising BiMaterial Nose Bridge for a secure and comfortable fit.

**SOFTERIL**  
**ULTRA SOFT SKIRT**  
*For comfort and leak resistant seal*



**STABILIZING BIMATERIAL NOSE BRIDGE**  
*Provides a secure and comfortable fit*



**QUICK FIT BUCKLE**  
*Offers easy onetouch strap adjustments*



**LATEX FREE** **MADE IN ITALY**



>>> **OTHER FEATURES:**

- Distortion free vision
- Antiscratch
- Softeril contains TPR



**PARTIALLY SUNNY**  
CLOUDY

ADAPTIVE V.L.T



>>> **EP3141203LPH** <<<

**PHOTOCHROMATIC**

KAYENNE.A1 DK GRY GRN LPH

V.L.T : 27% to 78%

**SUNNY**



>>> **EP3141008LPB** <<<

**BROWN POLARIZED**

KAYENNE.A1 GRY ORG LPB

V.L.T : 11%



>>> **EP3141006LMS** <<<

**SILVER TITANIUM MIRRORED**

KAYENNE.A1 GREY RED LMS

V.L.T : 13%

**PARTIALLY SUNNY**



>>> **EP3140115LD** <<<

**SMOKE**

KAYENNE.A1 BLK SLV LD

V.L.T : 27%



>>> **EP3140098LD** <<<

**SMOKE**

KAYENNE.A1 TR SILVER PETR LD

V.L.T : 27%



>>> **EP3141006LD** <<<

**SMOKE**

KAYENNE.A1 GREY RED LD

V.L.T : 27%

**INDOOR CLOUDY**



>>> **EP3140115LC** <<<

**CLEAR**

KAYENNE.A1 BLK SLV LC

V.L.T : 92%



>>> **EP3140098LC** <<<

**CLEAR**

KAYENNE.A1 TR SILVER PETR LC

V.L.T : 92%



>>> **EP3140001LC** <<<

**CLEAR**

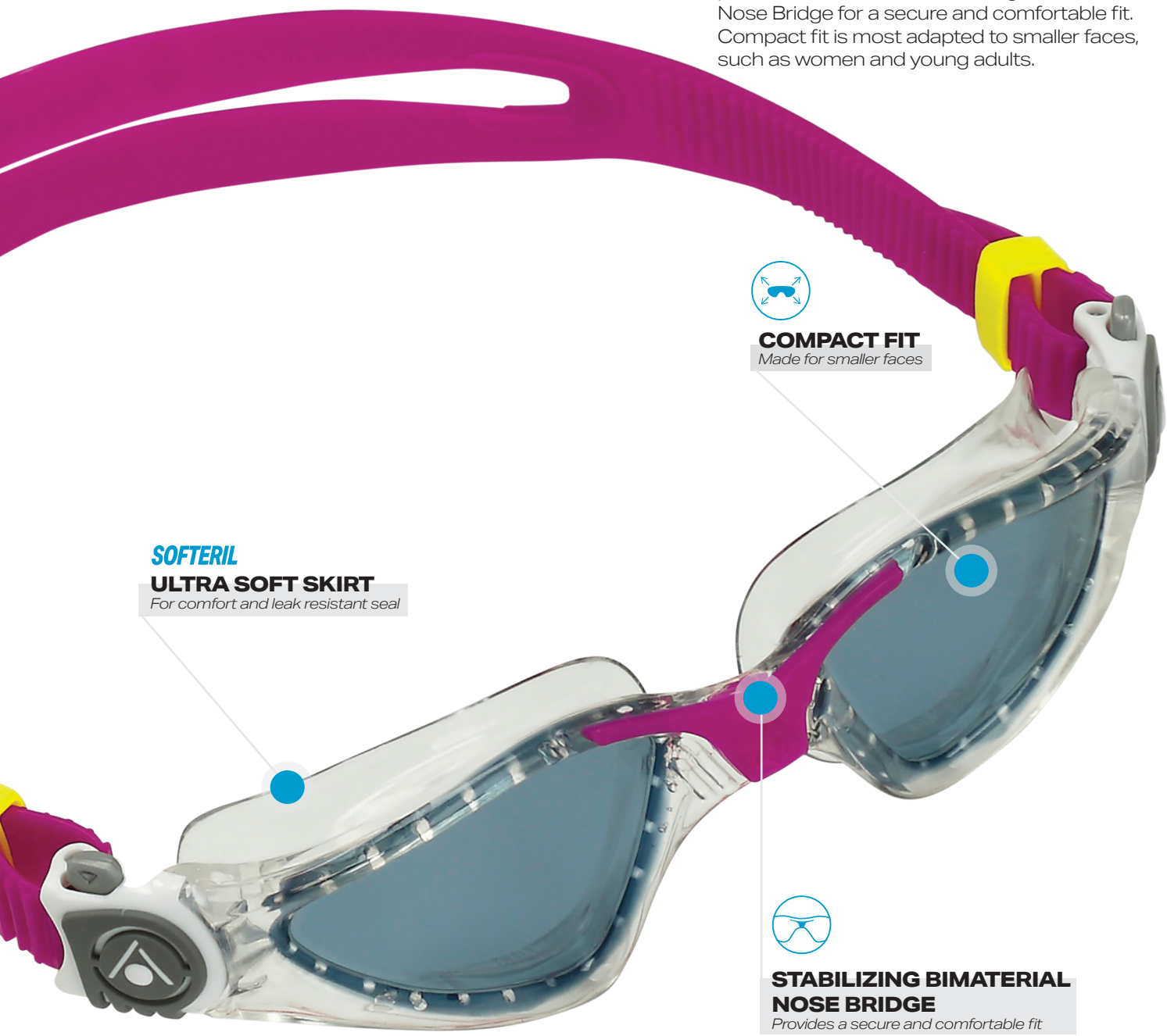
KAYENNE.A1 TRP BLK LC

V.L.T : 92%

# KAYENNE COMPACT

**ACTIVE**

>>> Whether you're racing or training, the Kayenne Compact is designed to help you reach your goals in the water using a unique, oversized lens design with expanded vision and a low-profile micro-frame. Save valuable seconds with our Quick Fit Buckle offering easy one-touch strap adjustments, and guarantee your perfect position thanks to the Stabilising BiMaterial Nose Bridge for a secure and comfortable fit. Compact fit is most adapted to smaller faces, such as women and young adults.



**SOFTERIL**  
**ULTRA SOFT SKIRT**  
*For comfort and leak resistant seal*

**COMPACT FIT**  
*Made for smaller faces*

**STABILIZING BIMATERIAL NOSE BRIDGE**  
*Provides a secure and comfortable fit*

  **LATEX FREE** **MADE IN ITALY**

- >>> **OTHER FEATURES:**
- Distortion free vision
  - Antiscratch
  - Softeril contains TPR

 **SUNNY**



>>> **EP3150910LPB** <<<

**BROWN POLARIZED**

KAYENNE SMALL.A1 WHT GRY LPB

V.L.T : 11%

 **PARTIALLY  
SUNNY**



>>> **EP3150016LD** <<<

**SMOKE**

KAYENNE SMALL.A1 TRP RASPBERRY LD

V.L.T : 27%

 **INDOOR  
CLOUDY**



>>> **EP3150016LC** <<<

**CLEAR**

KAYENNE SMALL.A1 TRP RASPBERRY LC

V.L.T : 92%

# KAIMAN EXO

**ACTIVE**

>>> Building off the long-standing success of our bestselling Kaiman design, which has sold more than eight million units, the Kaiman EXO incorporates first-of-its kind EXO-core bi-material frame technology that combines maximum stability with comfort. The Kaiman EXO is the perfect for the everyday swimmer looking to maximize comfort and durability.



**EXO  
CORE**

**EXO CORE TECHNOLOGY**

*Provides stability and allows for a great fit*



**EZ ADJUST BUCKLES WITH SILICONE SPLIT STRAP**

*For quick and easy fit adjustments*



**LATEX FREE** **MADE IN ITALY**

>>> **OTHER FEATURES:**

- Ultra soft softeril skirt: for maximum comfort, softeril contains TPR
- Antiscratch

 **SUNNY**



>>> **EP3169800LMS** <<<

**SILVER TITANIUM MIRRORED**

KAIMAN EXO.A1 PETROL TRP LMS

V.L.T : 13%

 **PARTIALLY  
SUNNY**



>>> **EP3169800LD** <<<

**SMOKE**

KAIMAN EXO.A1 PETROL TRP LD

V.L.T : 27%

 **INDOOR  
CLOUDY**



>>> **EP3169800LC** <<<

**CLEAR**

KAIMAN EXO.A1 PETROL TRP LC

V.L.T : 92%

# XCEED

## PERFORMANCE

>>> The XCEED combines curved lens technology and a hydrodynamic low profile fit to give swimmers a competitive edge in perfect clarity. Featuring Exo-Core technology, for maximum comfort, stability and flexibility, the XCEED is a popular Racing and Training partner of many competitive swimmers.



### ADJUSTABLE NOSE BRIDGE

With 4 interchangeable size options for a perfect fit

### EXO CORE

#### TECHNOLOGY

Provides stability and great hydrodynamics



### CURVED LENS GEOMETRY

Provides wide field of vision

### SOFTERIL

#### ULTRA SOFT SKIRT

For maximum comfort



LATEX FREE  
MADE IN ITALY



WORLD AQUATICS  
APPROVED

### >>> OTHER FEATURES:

- Distortion free vision
- Antiscratch
- Softeril contains TPR

 **SUNNY**

**NEW** LIMITED EDITION



>>> **EP3204002LMB** <<<

**BLUE TITANIUM MIRRORRED**  
XCEED.A1 BLUE PINK LMB  
V.L.T : 18%



>>> **EP3200109LMS** <<<

**SILVER TITANIUM MIRRORRED**  
XCEED.A1 BLK BLK WHT LMS  
V.L.T : 8%



>>> **EP3200101LMY** <<<

**YELLOW TITANIUM MIRRORRED**  
XCEED.A1 BLK BLK BLK LMY  
V.L.T : 9%



>>> **EP3200101LMP** <<<

**PINK TITANIUM MIRRORRED**  
XCEED.A1 BLK BLK BLK LMP  
V.L.T : 24%

 **PARTIALLY SUNNY**



>>> **EP3200109LD** <<<

**SMOKE**  
XCEED.A1 BLK BLK WHT LD  
V.L.T : 27%

 **PARTIALLY SUNNY INDOOR**



>>> **EP3200101LMR** <<<

**RED IRIDESCENT MIRRORRED**  
XCEED.A1 BLK BLK BLK LMR  
V.L.T : 48%

# FASTLANE

**ACTIVE**

>>> Turn your pool training sessions up a notch with our Fastlane swim goggles. Improve your stroke and keep building strength in total comfort thanks to the ultra-soft silicone skirt, offering the best in durability and fit. The Stable Strap System keeps your goggles in place while at the same time allowing for quick adjustments on the go. Top that off with the interchangeable nose bridge, and you're guaranteed the perfect fit.

## SILICONE

### ULTRA SOFT INNEREYE GASKET

Assures comfort and leak resistant seal



### ADJUSTABLE NOSE BRIDGE

With 4 interchangeable size options for a perfect fit



### STABLE STRAP SYSTEM

Offers quick adjustments



**LATEX FREE**

WORLD AQUATICS  
APPROVED

## >>> OTHER FEATURES:

- Antiscratch

 **PARTIALLY SUNNY**  
INDOOR

**NEW LIMITED EDITION**



>>> **EP3179940LMP** <<<

**PINK IRIDESCENT MIRRORED**

FASTLANE.A1 MULTICO BLUE LMR

V.L.T : 50%

 **SUNNY**



>>> **EP3170910LMS** <<<

**SILVER TITANIUM MIRRORED**

FASTLANE.A1 WHITE GREY LMS

V.L.T : 13%



>>> **EP3174009LMB** <<<

**BLUE TITANIUM MIRRORED**

FASTLANE.A1 BLUE WHITE LMB

V.L.T : 18%



>>> **EP3170406LMR** <<<

**RED TITANIUM MIRRORED**

FASTLANE.A1 NAVY BLUE RED LMR

V.L.T : 39%

 **PARTIALLY SUNNY**



>>> **EP3179898LD** <<<

**SMOKE**

FASTLANE.A1 PETROL PETROL LD

V.L.T : 27%

 **INDOOR CLOUDY**



>>> **EP3170471LC** <<<

**CLEAR**

FASTLANE.A1 NVY BRIGHT YLW LC

V.L.T : 88%

# SEAL 2.0

**ACTIVE**

>>> Keep improving your fitness levels and take on your next swim sessions in our Seal 2.0 swim mask. Stay focused in the water with the superior fitting AFT leak-resistant seal and an ultra-comfortable silicone skirt designed to fit a wide variety of face shapes. You can also keep your mask fitting snug thanks to the easily adjustable buckle and split silicone strap.

**A·F·T**

**AFT: ADVANCED FIT TECHNOLOGY**

*Provides a leak resistant seal*

**SILICONE**

**COMFORTABLE SKIRT**

*Fits a wide variety of faces for maximum comfort*



**EZ ADJUST BUCKLES WITH SILICONE SPLIT STRAP**

*For quick and easy fit adjustments*



**LATEX FREE** **MADE IN ITALY**

>>> **OTHER FEATURES:**

- Distortion free vision
- Antiscratch

 **PARTIALLY  
SUNNY**



>>> **MS5620103LD** <<<

**SMOKE**

SEAL 2.0.A1 BLK GRN LD

V.L.T : 27%



>>> **MS5623535LD** <<<

**SMOKE**

SEAL 2.0.A1 TINTED GREEN LD

V.L.T : 27%

 **INDOOR  
CLOUDY**



>>> **MS5624109LC** <<<

**CLEAR**

SEAL 2.0.A1 LBL WHT LC

V.L.T : 92%



>>> **MS5620110LC** <<<

**CLEAR**

SEAL 2.0.A1 BLK GRY LC

V.L.T : 92%



>>> **MS5623535LC** <<<

**CLEAR**

SEAL 2.0.A1 TINTED GREEN LC

L.T : 92%



# EAGLE

## ACTIVE

 **INDOOR CLOUDY**



>>> **EP3220000LC** <<<

**CLEAR**

EAGLE.A1 TRP TRP LC  
V.L.T : 92%



>>> **EP3224400LC** <<<

**CLEAR**

EAGLE.A1 DBL TRP LC  
V.L.T : 92%



>>> **EP3100000N** \* <<<

**CLEAR**

OPTICAL LENS T EAGLE  
V.L.T : 92%

>>> Eagle Swim Goggles come with polycarbonate interchangeable lenses that you can easily swap out for custom corrective vision. Utilizing a unique construction of a one-piece silicone skirt and nose bridge frame combined with interchangeable lens retainer allows swimmers to purchase right and left high grade optical lenses to meet their specific vision.

### SILICONE

#### COMFORTABLE SKIRT

*For comfort and leak resistant seal*



#### EZ ADJUST BUCKLES WITH SILICONE SPLIT STRAP

*For quick and easy fit adjustments*

>>> Lenses come in half-step increments from -1.5 to -6.0 to match individual strengths for each eye.

Sold separately.



-1.5	<b>EP3100000N15</b>
-2.0	<b>EP3100000N20</b>
-2.5	<b>EP3100000N25</b>
-3.0	<b>EP3100000N30</b>
-3.5	<b>EP3100000N35</b>
-4.0	<b>EP3100000N40</b>
-4.5	<b>EP3100000N45</b>
-5.0	<b>EP3100000N50</b>
-5.5	<b>EP3100000N55</b>
-6.0	<b>EP3100000N60</b>



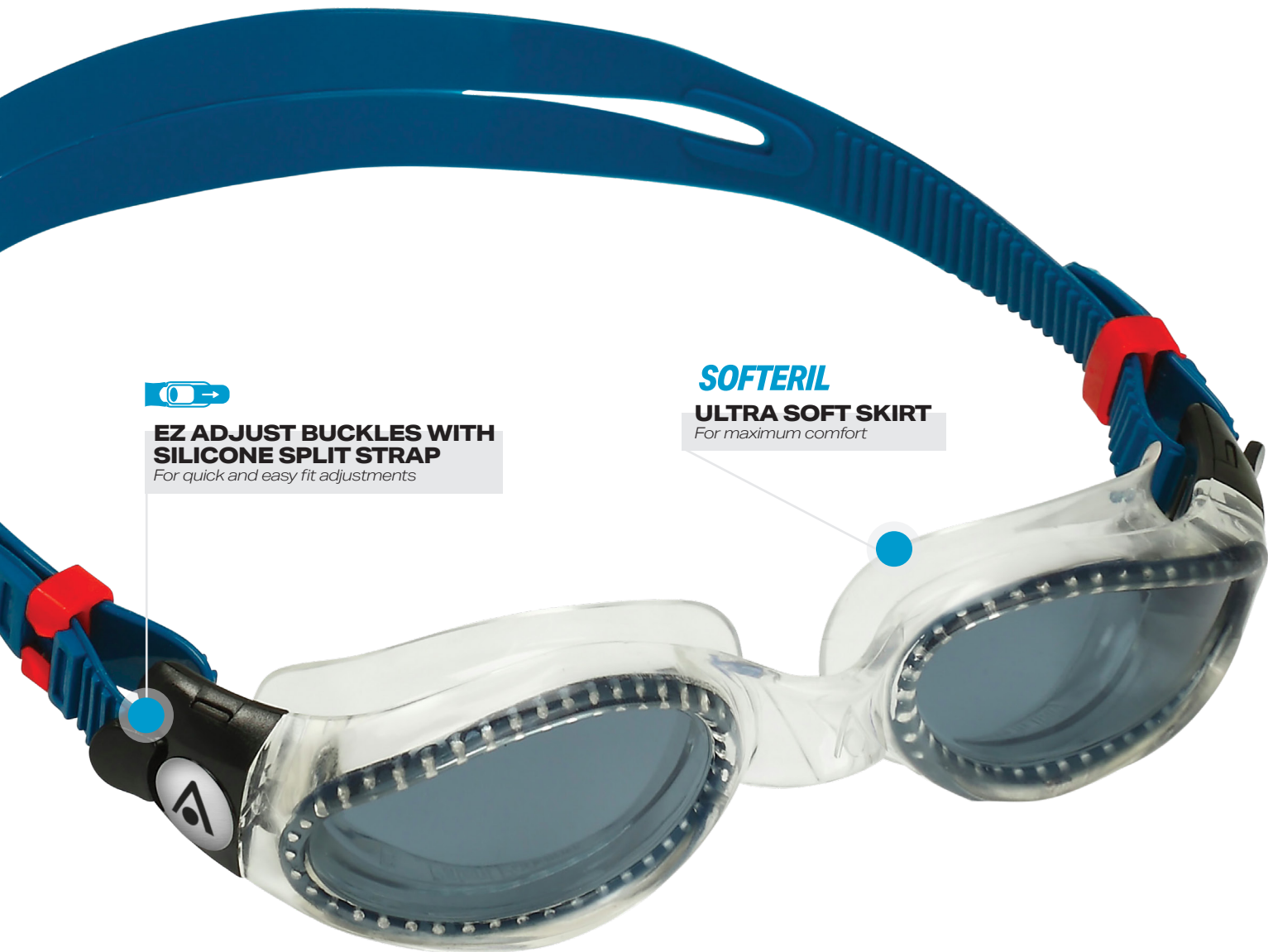
### >>> OTHER FEATURES:

- Antiscratch

# KAIMAN

**ACTIVE**

>>> The Kaiman is the perfect go-to goggle for swimmers who take their training sessions and fitness seriously. Thanks to the ultra-soft silicone Softeril skirt, split strap, and easy-to-use buckle for quick fit adjustments, the KAIMAN has proved time and time again that it is, without a doubt, one of the most comfortable and watertight swim goggles on the market.



**EZ ADJUST BUCKLES WITH SILICONE SPLIT STRAP**

*For quick and easy fit adjustments*

**SOFTERIL**

**ULTRA SOFT SKIRT**

*For maximum comfort*



**LATEX FREE MADE IN ITALY**

>>> **OTHER FEATURES:**

- Antiscratch
- Softeril contains TPR

**SUNNY**



>>> **EP3180098LMS** <<<

**SILVER TITANIUM MIRRORED**

KAIMAN.A1 CLEAR PETROL LMS

V.L.T : 13%

**PARTIALLY  
SUNNY**



>>> **EP3180000LD** <<<

**SMOKE**

KAIMAN.A1 TRP TRP LD

V.L.T : 27%



>>> **EP3180098LD** <<<

**SMOKE**

KAIMAN.A1 CLEAR PETROL LD

V.L.T : 27%



>>> **EP3180101LD** <<<

**SMOKE**

KAIMAN.A1 BLK BLK LD

V.L.T : 27%

**INDOOR  
CLOUDY**



>>> **EP3180000LB** <<<

**BLUE TINTED**

KAIMAN.A1 TRP TRP LB

V.L.T : 58%



>>> **EP3180098LC** <<<

**CLEAR**

KAIMAN.A1 CLEAR PETROL LC

V.L.T : 92%



>>> **EP3180101LC** <<<

**CLEAR**

KAIMAN.A1 BLK BLK LC

V.L.T : 92%



>>> **EP3180000LC** <<<

**CLEAR**

KAIMAN.A1 TRP TRP LC

V.L.T : 92%



>>> **EP3184100LC** <<<

**CLEAR**

KAIMAN.A1 LBL TRP LC

V.L.T : 92%

# KAIMAN COMPACT

**ACTIVE**

>>> The Kaiman Compact is the perfect go-to goggle for swimmers who take their training sessions and fitness seriously. Thanks to the ultra-soft silicone Softeril skirt, split strap, and easy-to-use buckle for quick fit adjustments, the KAIMAN has proved time and time again that it is, without a doubt, one of the most comfortable and watertight swim goggles on the market.



**SOFTERIL**  
**ULTRA SOFT SKIRT**  
*For maximum comfort*



**COMPACT FIT**  
*Made for smaller faces*



**EZ ADJUST BUCKLES WITH SILICONE SPLIT STRAP**  
*For quick and easy fit adjustments*



**LATEX FREE** **MADE IN ITALY**

- >>> **OTHER FEATURES:**
- Antiscratch
  - Softeril contains TPR

 **PARTIALLY  
SUNNY**



>>> **EP3230101LD** <<<

**SMOKE**

KAIMAN SMALL.A1 BLK BLK LD

V.L.T : 27%



>>> **EP3230000LD** <<<

**SMOKE**

KAIMAN SMALL.A1 TRP TRP LD

V.L.T : 27%

 **INDOOR  
CLOUDY**



>>> **EP3230000LB** <<<

**BLUE TINTED**

KAIMAN SMALL.A1 TRP TRP LB

V.L.T : 92%



>>> **EP3230101LC** <<<

**CLEAR**

KAIMAN SMALL.A1 BLK BLK LC

V.L.T : 92%



>>> **EP3230043LC** <<<

**CLEAR**

KAIMAN SMALL.A1 TRP TBL LC

V.L.T : 92%



# MAKO

## ACTIVE

>>> Bringing Aquasphere's comfort and quality to the everyday swimmer, the Mako utilizes a one-piece frame construction and easy-to-adjust side buckles. The Mako is a perfect goggle for the casual swimmer who's looking for a comfortable solution.

### SOFTERIL ULTRA SOFT SKIRT

Allows maximum comfort & leak resistant seal



### EZ ADJUST BUCKLES WITH SILICONE SPLIT STRAP

For quick and easy fit adjustments



LATEX FREE MADE IN ITALY

### >>> OTHER FEATURES:

- Flat lens
- Antiscratch
- Softeril contains TPR

INDOOR  
CLOUDY



>>> EP3240040LB <<<

BLUE TINTED

MAKO2.A1 TRP BLUE LB

V.L.T : 58%



>>> EP3240040LC <<<

CLEAR

MAKO2.A1 TRP BLUE LC

V.L.T : 92%

# VISTA JR

**JUNIOR**

>>> Designed for aged 6+. The Vista Jr fits like a mask by sealing around the outside of the eyes, eliminating any pressure on the eye sockets. This creates a more Comfortable, Leak Free Fit so your kids can wear them all day without worrying about getting water in their eyes.

Incorporating our curved lens technology to offer a wide field of vision to give a very open, unrestricted feel that will boost your kids confidence in the water. Our Quick-Fit Buckle System makes adjusting the Vista Jr head strap easy.



**6+**

**FIT**  
Ages 6+



**QUICK FIT BUCKLE**

Provides perfect fit & easy adjustments

**SOFTERIL**

**ULTRA SOFT SKIRT**

Allows maximum comfort & leak resistant seal



**LATEX FREE** **MADE IN ITALY**

>>> **OTHER FEATURES:**

- Antiscratch
- Softeril contains TPR

INDOOR  
CLOUDY



>>> **MS5630209LB** <<<

**BLUE TINTED**

VISTA JR.A1 PK WHT LB

**V.L.T : 58%**



>>> **MS5630031LB** <<<

**BLUE TINTED**

VISTA JR.A1 TRP BGN LB

**V.L.T : 58%**



>>> **MS5634008LC** <<<

**CLEAR**

VISTA JR.A1 BLU ORG LC

**V.L.T : 92%**



>>> **MS5634007LC** <<<

**CLEAR**

VISTA JUNIOR.A1 BLU YLW LC

**V.L.T : 92%**



>>> **MS5634302LC** <<<

**CLEAR**

VISTA JUNIOR.A1 TRQ PNK LC

**L.T : 92%**

# SEAL KID 2

**JUNIOR**

>>> The evolution of the original swim mask for children, the Seal Kid 2 delivers a leak-free fit for children as young as 3 years old. The Seal Kid 2 utilizes Aquasphere curved lenses technology for a wide field of vision, making children more confident in the water. The easy-adjust side buckles are simple for kids or parents to adjust even while wearing!



## SOFTERIL

### ULTRA SOFT SKIRT

Allows maximum comfort & leak resistant seal

3y+

**FIT**  
Ages 3+



**LATEX FREE** **MADE IN ITALY**

### >>> OTHER FEATURES:

- Torsion-free inserts
- Antiscratch
- Softeril contains TPR

INDOOR  
CLOUDY



>>> **MS5610000LB** <<<

**BLUE TINTED**

SEAL KID2 '18.A1 TRP LIME LB  
V.L.T : 58%



>>> **MS5614002LC** <<<

**CLEAR**

SEAL KID2 '18.A1 BLUE PINK LC  
V.L.T : 92%



>>> **MS5614340LC** <<<

**CLEAR**

SEAL KID2 '18.A1 TURQ BLUE LC  
V.L.T : 92%



>>> **MS5613131LC** <<<

**CLEAR**

SEAL KID2 '18.A1 BGN BGN LC  
LV..T : 92%



>>> **MS5614343LC** <<<

**CLEAR**

SEAL KID2 '18.A1 AQUA LIME LC  
V.L.T : 92%



>>> **MS5610505LC** <<<

**CLEAR**

SEAL KID2 '18.A1 PRP LIME LC  
V.L.T : 92%



>>> **MS5610202LC** <<<

**CLEAR**

SEAL KID2 '18.A1 PK WHITE LC  
V.L.T : 92%

# KAYENNE JR

**JUNIOR**

>>> Designed for ages 6-15. The Kayenne Jr has unique oversized lens design and softeril skirt to combine for a comfortable leak free fit. Quick fit buckles make for easy one touch strap adjustments, even when wearing them!



**SOFTERIL**  
**ULTRA SOFT SKIRT**  
For comfort and leak resistant seal

**EZ ADJUST BUCKLES WITH SILICONE SPLIT STRAP**  
For quick and easy fit adjustments

**6y+**  
**FIT**  
Ages 6+

 **LATEX FREE** **MADE IN ITALY**

- >>> **OTHER FEATURES :**
- Antiscratch
  - Softeril contains TPR

 **PARTIALLY  
SUNNY**



>>> **EP3194009LD** <<<

**SMOKE**

KAYENNE J.R.A1 BLU WHITE LD

V.L.T : 27%

 **INDOOR  
CLOUDY**



>>> **EP3190043LB** <<<

**BLUE TINTED**

KAYENNE J.R.A1 TRP AQUA LB

V.L.T : 58%



>>> **EP3194007LC** <<<

**CLEAR**

KAYENNE J.R.A1 BLU YELLOW LC

V.L.T : 92%



>>> **EP3194302LC** <<<

**CLEAR**

KAYENNE J.R.A1 AQUA PINK LC

V.L.T : 92%



>>> **EP3190131LC** <<<

**CLEAR**

KAYENNE J.R.A1 BLK BGN LC

V.L.T : 92%



>>> **EP3190209LC** <<<

**CLEAR**

KAYENNE J.R.A1 PK WHT LC

V.L.T : 92%

# WETSUITS

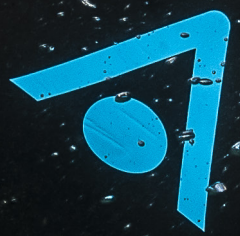
advanced  
**technology**



Innovative mix of performance and long-lasting comfort, we aim to provide triathletes and open water swimmers the best training and race wetsuits.



SPHERE



# MATERIALS

## YAMAMOTO

Durable, lightweight, high-performance Japanese neoprene feels like a second skin thanks to maximum elasticity and thermal insulation.



## YAMAMOTO 38

A more compressive version of the Japanese Yamamoto neoprene contours to your body in areas with smaller motion ranges.



## YAMAMOTO 39

The high-elasticity version of Yamamoto neoprene offers a greater range of motion to reduce muscle fatigue while swimming.



## YAMAMOTO 40

The latest generation of Japanese neoprene features improved flexibility for an unlimited range of motion.



## Bio Stretch Zones

2-way stretch for an unlimited and uncompromised range of motion in the water.



## Super Composite Skin

Hydrophobic coating to reduce surface drag for more speed in the water and during transitions.



# TECHNOLOGIES



## QUICK RELEASE PANELS

Increased mid-calf openings make your suit easier to get off for faster transition times.



## AERODOME TECHNOLOGY

Retain water bubbles in air pockets to boost buoyancy and save energy.

**2.0**  
**AQUAFLEX**

## AQUAFLEX 2.0

Dual-sided SCS neoprene collar to limit water entry and avoid neck chafing. More comfortable than ever.



## THERMO GUARD

More warmth for more time spent at the top of your game.

# RACER.Boost


## PERFORMANCE



**2.0  
AQUAFLEX**  
SCS neoprene double sided collar  
Maximizes comfort  
Prevents chaffing

 **40  
XX**  
**BIO STRETCH ZONES  
& YAMAMOTO 40**  
Maximizes flexibility  
Increase range of motion  
Reduced fatigue

 **AERODOME  
TECHNOLOGY**  
Maximizes buoyancy  
Improved Body position

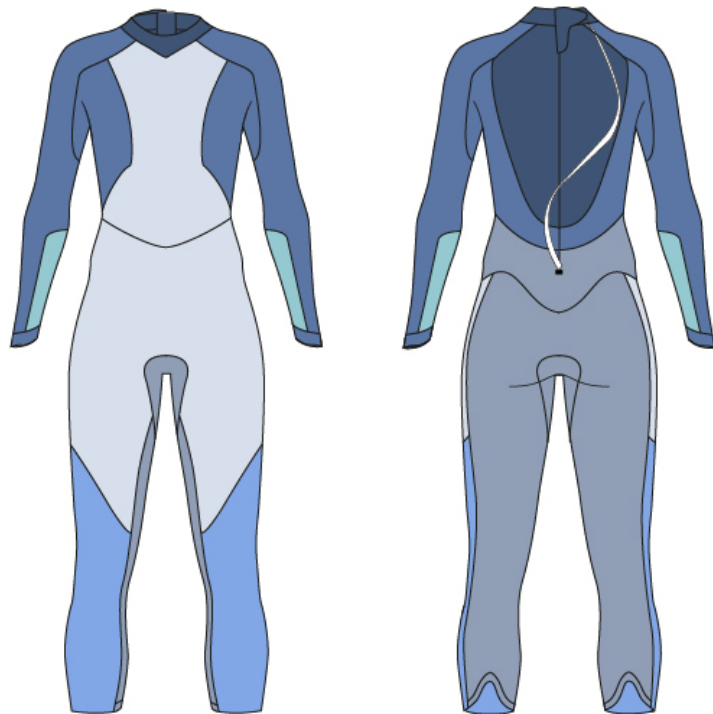
 **QUICK RELEASE PANEL**  
Increased mid-calf opening  
Easy off  
Improved transition time

>>> Feel the difference and save energy during your race with our best in class triathlon wetsuit, the RACER Boost. Strategically placed Aerodome Technology provides extra boost of buoyancy for better horizontal positioning in the water and the latest generation of Yamamoto 40 neoprene improves flexibility in the shoulders and back to reduce muscle fatigue. Experience ultimate comfort with the new Aquaflex 2.0 anti-chafe collar, faster transitions with Quick Release Panels and reduced water drag with our SCS Coating.



YAMAMOTO

- 4MM - #39
- 3.5MM - #39
- 3.5MM - AERODOME
- 2MM - #40
- 1,5MM - #40
- LYCRA FABRIC



**MEN**

>>> **SU0100173** <<<

**BLACK & LIME**

XS / S / M / ML / L / XL / 2XL



**WOMEN**

>>> **SU0110173** <<<

**BLACK & LIME**

XS / S / M / L / XL

**OTHER FEATURES:**

- SCS Coating: reduced drag and water absorption, greater water glide & increased speed
- Thermo Guard: neoprene panels on chest, shoulders and legs, maintains body heat
- Reversed back zipper: top to bottom for easy removal

# RACER.Flex

## PERFORMANCE



### 2.0 AQUAFLEX

SCS neoprene  
double sided collar  
Maximizes comfort  
Prevents chaffing



### BIO STRETCH ZONES & YAMAMOTO 40

Maximizes flexibility  
Increase range of motion  
Reduced fatigue



### SCS COATING

Reduced drag and  
water absorption for a  
greater water glide



### QUICK RELEASE PANEL

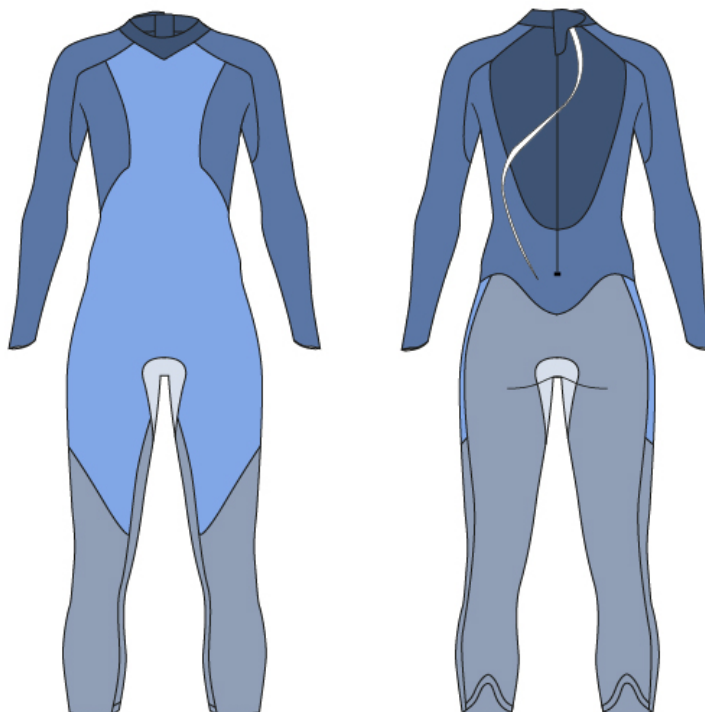
Increased mid-calf opening  
Easy off  
Improved transition time

>>> Set off into your triathlon race with confidence in the RACER.Flex thanks to Bio Stretch Zones and Yamamoto 40 limestone neoprene in strategic area for maximum flexibility and reduced muscle fatigue. Using Thermo Guard technology to maintain body heat and a new Aquaflex 2.0 double-sided collar to prevent chafing means you can focus on your stroke in extreme comfort. The different panels thicknesses allow for ideal buoyancy and greater water glide. The RACER.Flex is the optimal wetsuit for any triathlete.



YAMAMOTO

- 5MM - #39
- 4MM - #39
- 3MM - #39
- 2MM - #39
- 1,5MM - #40



**MEN**

>>> **SU0120131** <<<<  
**BLACK & GREEN**  
 XS / S / M / ML / L / XL / 2XL



**WOMEN**

>>> **SU0130131** <<<<  
**BLACK & GREEN**  
 XS / S / M / L / XL

**OTHER FEATURES:**

- *Thermo Guard: thick neoprene panels on chest, shoulders and legs to maintains body heat*
- *Regular back zipper: easy removal*

# RACER.Active

ACTIVE



## 2.0 AQUAFLEX

SCS neoprene  
double sided collar  
Maximizes comfort  
Prevents chaffing



## BIO STRETCH ZONES

Maximizes flexibility  
Increase range of motion  
Reduced fatigue

## 38 XX

### YAMAMOTO 38

4mm neoprene panels on chest  
and thighs  
Increased buoyancy & reduced  
drag

>>> The RACER.Active is designed to fit you better thanks to 2mm Bio Stretch Zones in critical areas for freedom of movement and more compressive Yamamoto 38 neoprene for extra support where you need it most. Our new and improved Aquaflex 2.0 double-sided collar is our comfiest anti-chafe neck seal yet, while the Thermo Guard panels help you maintain your body temperature so you can stay in the water for longer. Training for your next triathlon has never felt better.



YAMAMOTO

- 4MM - #38
- 3,5MM - #38
- 3MM - #38
- 2MM - #38
- 2MM - #39
- 1,5MM - #38



**OTHER FEATURES:**

- SCS Coating: reduced drag & water absorption, greater water glide
- Thermo Guard: thick neoprene panels on chest, shoulders and legs to maintains body heat
- Regular back zipper: easy removal
- Quick release panels: horse shoe opening, easy off



**MEN**

>>> **SU0220140** <<<

**BLACK & BLUE**

XS / S / M / ML / L / XL / 2XL



**WOMEN**

>>> **SU0230140** <<<

**BLACK & BLUE**

XS / S / M / L / XL

# Aquaskin Full suit

**ACTIVE**



**HYBRID CONSTRUCTION**

Jersey insert  
Increased range of motion

**SCS COATING**

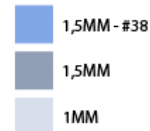
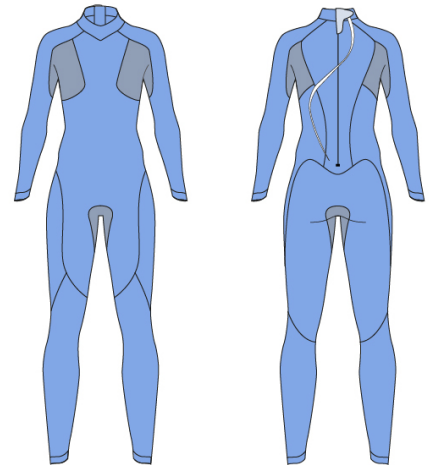
SCS Neoprene 1,5mm  
Maximum flexibility & reduced drag and water absorption

>>> Extend the length of your stroke and increase your speed in the water with 1.5mm SCS Neoprene, designed to provide maximum flexibility where you need it most and reduced drag and water absorption. Experience lighter, warmer or more comfortable swim sessions with the AQUASKIN Full Suit, the perfect match for any open water swimmer.



**OTHER FEATURES:**

- Glued & Blindstitched assembling; watertight seal
- Pull back zipper: easy on & off



**MEN**



**WOMEN**

>>> **SU8400140** <<<

**BLACK & BLUE**  
S / M / L / XL / 2XL

>>> **SU8410140** <<<

**BLACK & BLUE**  
XS / S / M / L / XL

# Aquaskin Shorty

**ACTIVE**



**HYBRID CONSTRUCTION**

Jersey insert  
Increased range of motion

**SCS COATING**

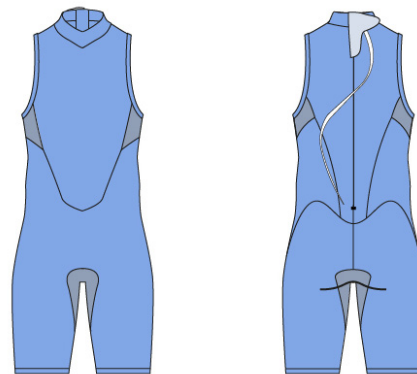
**SCS COATING**  
SCS Neoprene 1,5mm  
Maximum flexibility & reduced drag and water absorption

>>> Maximise your time in water and boost your training sessions with 1.5mm SCS Neoprene for maximum flexibility. Thanks to watertight glued and blind stitched seams, the easy on-and-off back zip AQUASKIN Shorty is the perfect match for any open water swimmer



**OTHER FEATURES :**

- Glued & Blindstitched assembling: watertight seal
- Pull back zipper: easy on & off



**MEN**



**WOMEN**

>>> **SU8520140** <<<

**BLACK & BLUE**  
S / M / L / XL / 2XL

>>> **SU8510140** <<<

**BLACK & BLUE**  
XS / S / M / L / XL

# Aquaskin Top

**ACTIVE**



**HYBRID CONSTRUCTION**  
0.5mm Neoprene on body and fabric on sleeve.

>>> The Aquaskin Top is ultra-light, durable and offers high range of motion thanks to its ultra thin neoprene panels combined with Polyester spandex sleeves.



**MEN**

>>> **SU8430140** <<<

**BLACK & BLUE**  
S / M / L / XL / 2XL



**WOMEN**

>>> **SU8440140** <<<

**BLACK & BLUE**  
XS / S / M / L / XL

# Aquaskin Hood

**ACTIVE**



**S·C·S COATING**  
Neoprene 2mm  
Warmth & Comfort

**OTHER FEATURES:**  
• Glued and blindstitched assembling



>>> **SU8230140** <<<

**BLACK & BLUE**  
S / M / L / XL





# Stingray

**JUNIOR**

>>> The Stingray core warmer keeps kids warm and allows the freedom of movement they need while playing in and out of the water.



### UPF 40

Protect against harmful rays.

### HYBRID CONSTRUCTION

Neoprene and fabric (80%Nylon, 20% Spandex) panels



>>> **SJ4384204** <<<

**ROYAL BLUE NAVY BLUE**

2/4/6/8/10/12



>>> **SJ4380204** <<<

**PINK NAVY BLUE**

2/4/6/8/10/12



>>> **SJ4383104** <<<

**BRIGHT GREEN NAVY BLUE**

2/4/6/8/10/12

# SIZING CHART

## MEN

WETSUITS	HEIGHT (INCH/CM)	WEIGHT (LB/KG)
<b>XS</b>	59 - 65	121 - 143
	150 - 165	55 - 63
<b>S</b>	65 - 69	139 - 161
	165 - 175	63 - 73
<b>M</b>	68 - 73	155 - 175
	173 - 185	70 - 80
<b>ML</b>	70 - 75	165 - 198
	178 - 190	75 - 90
<b>L</b>	73 - 76	187 - 214
	185 - 195	85 - 97
<b>XL</b>	75 - 80	207 - 242
	190 - 205	94 - 110
<b>2XL</b>	78 +	242 +
	200+	110+

## WOMEN

WETSUITS	HEIGHT (INCH/CM)	WEIGHT (LB/KG)
<b>XS</b>	57 - 61	100 - 115
	145 - 155	45 - 52
<b>S</b>	61 - 65	110 - 125
	155 - 165	50 - 57
<b>M</b>	65 - 69	120 - 145
	165 - 175	54 - 64
<b>L</b>	68 - 73	140 - 165
	173 - 185	64 - 75
<b>XL</b>	73+	165+
	185+	75+

## KIDS

STINGRAY	HEIGHT (INCH/CM)	WEIGHT (LB/KG)
<b>2</b>	33 - 39	25 - 35
	84 - 99	11 - 16
<b>4</b>	40 - 44	35 - 45
	101 - 112	16 - 20
<b>6</b>	45 - 47	42 - 47
	114 - 119	19 - 22
<b>8</b>	48 - 50	47 - 54
	122 - 127	21 - 25
<b>10</b>	51 - 56	55 - 70
	130 - 142	25 - 32
<b>12</b>	55 - 60	73 - 84
	140 - 152	33 - 38

# TECHSUITS

*purposefully*  
advanced  
**technologies**

Designed for the elite athletes, our competitive tech suits feature compressive support and exceptional hydrodynamics.





# BLAST.Ultra

LIMITED  
EDITION

## PERFORMANCE



Swim to win in the BLAST.Ultra race suit. Designed and tested with the top athletes and experts in the industry, this suit is made with hydrophobic 4-way stretch fabric for less drag, greater glide and increased speed in the water. The smart compression zones ensure support in critical areas, while the strategic lining, taping and flexible yet durable straps provide unmatched comfort. The BLAST.Ultra is the ultimate balance between compression and comfort to enhance your pool performance and boost your competition results.



### HYDROPHOBIC FABRICS

Greater glide  
Increased speed

### 4 WAY STRETCH ITALIAN FABRIC

Increased flexibility  
Smart compression

### STRATEGIC TAPE PLACEMENT

Muscle compression  
Reduced drag

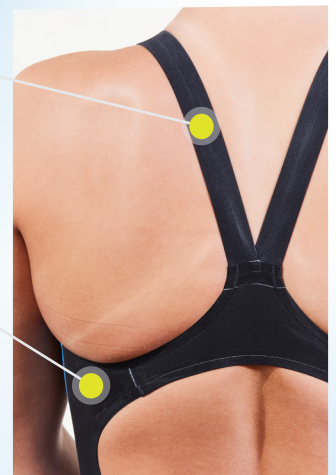


### FLEXIBLE & DURABLE STRAPS

Increased comfort and freedom  
movement

### STRATEGIC INTERIOR LINING

Higher comfort  
Body support



### OTHER FEATURES:

- Strategic interior lining : higher comfort and body support
- Inter leg gusset construction
- Antislip
- Inner draw cords (men)



APPROVED

NEW



WOMEN

&gt;&gt; CW0220199 &lt;&lt;&lt;

**CLOSE BACK**  
**BLACK MULTICOLOR**

26 /28 /30 /32 /34 /36/38/40

NEW



WOMEN

&gt;&gt; CW0230199 &lt;&lt;&lt;

**OPEN BACK**  
**BLACK MULTICOLOR**

26 /28 /30 /32 /34 /36/38/40

NEW



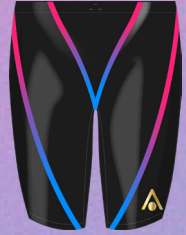
MEN

&gt;&gt; CM0170199 &lt;&lt;&lt;

**LOW WAIST**  
**BLACK MULTICOLOR**

50/55/60/65/70/75/80/85

NEW



MEN

&gt;&gt; CM0180199 &lt;&lt;&lt;

**HIGH WAIST**  
**BLACK MULTICOLOR**

50/55/60/65/70/75/80/85

## SIZING CHART

### MEN

<b>FR</b>		50	55	60	65	70	75	80	85
<b>UK / US</b>		20	22	24	26	28	30	32	34
<b>DE / A / CH</b>		000	00	0	1	2	3	4	5
<b>IT</b>		34	36	38	40	42	44	46	48
<b>WAIST</b>	<b>cm</b>	66-69	69-71	71-74	74-76	76-79	79-81	81-84	84-87
	<b>inches</b>	26-27	27-28	28-29	29-30	30-31	31-32	32-33	33-34
<b>HIPS</b>	<b>cm</b>	78-82	82-84	84-87	87-92	92-97	97-99	99-102	102-104
	<b>inches</b>	30-32	32-33	33-34	34-36	36-38	38-39	39-40	40-41

### WOMEN

<b>FR</b>		26	28	30	32	34	36	38	40
<b>UK / US</b>		20	22	24	26	28	30	32	34
<b>DE / A / CH</b>		24	26	28	30	32	34	36	38
<b>IT</b>		30	32	34	36	38	40	42	44
<b>CHEST</b>	<b>cm</b>	64-70	70-81	81-84	84-89	89-92	92-97	97-99	99-102
	<b>inches</b>	25-27	27-32	32-33	33-35	35-36	36-38	38-39	39-40
<b>WAIST</b>	<b>cm</b>	51-56	56-61	61-66	66-71	71-74	74-76	76-79	79-81
	<b>inches</b>	20-22	22-24	24-26	26-28	28-29	29-30	30-31	31-32
<b>HIPS</b>	<b>cm</b>	71-76	76-81	81-87	87-92	92-97	97-102	102-107	107-112
	<b>inches</b>	28-30	30-32	32-34	34-36	36-38	38-40	40-42	42-44
<b>BODY LOOP</b>	<b>cm</b>	135	140	145	150	155	160	165	170
	<b>inches</b>	53-54	55-56	57-58	59-60	61-62	63-64	65-66	67-68

NOTE: THIS CHART IS INTENDED TO BE USED AS A GENERAL SIZING GUIDELINE.

# RACER.Speedsuit

## PERFORMANCE

>>> Speed through the warm water like never before using a combination of hydrophobic fabric that decreases drag and reduces water absorption, jacquard fabric for more flexibility, and woven materials for compressive support when you need it most. Designed for the elite triathlete, the exceptionally hydrodynamic RACER Speedsuit is engineered with Thermo-Bonded Seams to prevent chafing and an Auto-Lock Zipper with an easy release for super-fast, fuss-free transitions.



### JACQUARD FABRIC

Increased flexibility



### THERMO BOUNDED SEAMS

Prevents chaffing & maximize comfort



### WOVEN FABRIC

Increased compression



### HYDROPHOBIC FABRICS

Muscle vibrating control, reduced water absorption & drag



● JACQUARD fabric  
● Woven fabric

### OTHER FEATURES:

- Auto Lock Zipper
- Back staydown puller: quick transition & easy release



MEN

>>> CM0130101 <<<

BLACK

XS/S/M/ML/L/XL/2XL



WOMEN

>>> CW0180101 <<<

BLACK

XS/S/M/L/XL

# SIZING CHART

## MEN

TECHSUITS	HEIGHT (INCH/CM)	WEIGHT (LB/KG)
<b>XS</b>	59 - 65	121 - 143
	150 - 165	55 - 63
<b>S</b>	65 - 69	139 - 161
	165 - 175	63 - 73
<b>M</b>	68 - 73	155 - 175
	173 - 185	70 - 80
<b>ML</b>	70 - 75	165 - 198
	178 - 190	75 - 90
<b>L</b>	73 - 76	187 - 214
	185 - 195	85 - 97
<b>XL</b>	75 - 80	207 - 242
	190 - 205	94 - 110
<b>2XL</b>	78 +	242 +
	200+	110+

## WOMEN

TECHSUITS	HEIGHT (INCH/CM)	WEIGHT (LB/KG)
<b>XS</b>	57 - 61	100 - 115
	145 - 155	45 - 52
<b>S</b>	61 - 65	110 - 125
	155 - 165	50 - 57
<b>M</b>	65 - 69	120 - 145
	165 - 175	54 - 64
<b>L</b>	68 - 73	140 - 165
	173 - 185	64 - 75
<b>XL</b>	73+	165+
	185+	75+

# SWIMWEAR

insightful &  
**sustainable**

Our swimwear chlorine-resistant and sustainable fabrics mixed to the right amount of stretch offers durability, functionality and comfort.



R

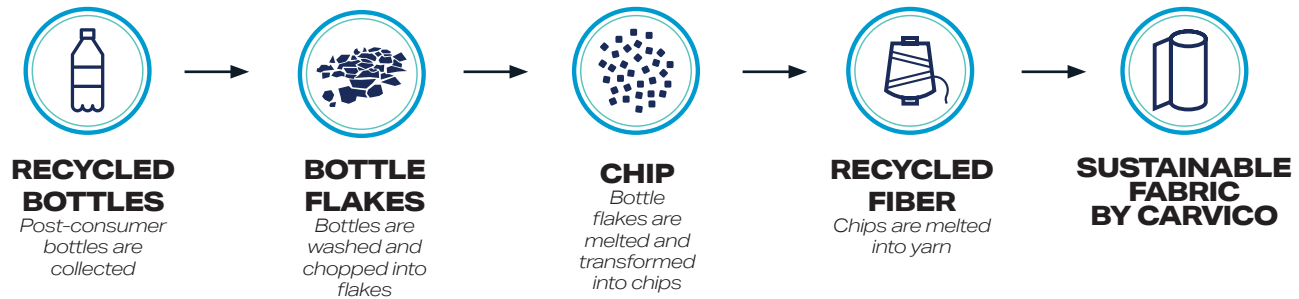




# SWIMWEAR FABRICS

**SUSTAINABILITY**

All our Essentials training suits are made from 2 to 5 plastic bottles.



**SUSTAINABLE FABRICS**

Sydney Eco and Xplay sustainable fabrics have been designed to last through any intense training.

- 

**CHLORINE PROOF**
- 

**FOUR-WAY STRETCH**
- 

**RECYCLED YARN**
- 

**PILLING RESISTANT**
- 

**BREATHABLE**

**51%**  
Recycled Polyester

---

**+ 49%**  
P.B.T

**SYDNEY ECO**

**78%**  
Recycled Polyester from post-consumer recycled PET bottles

---

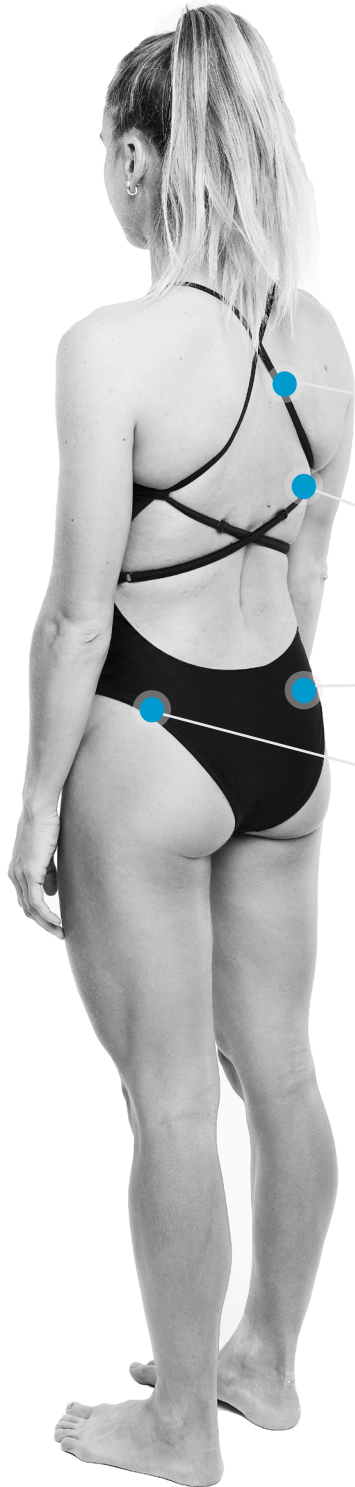
**+ 22%**  
XLance® elastomer

**XPLAY**

# DIAMOND BACK **ADJ**

## ESSENTIALS

>>> The Essentials Diamond Back Adjustable has been designed to last through any intense training. Crafted with XPLAY sustainable fabric, it assures great support and comfort during swim training, and features adjustable straps for a greater fit. Co-designed with international athletes. This training suit is made of 4 plastic bottles!\*



**DIAMOND BACK**  
Trendy sport design

**SILICONE ADJUSTABLE STRAPS**  
With sliders, ensure a perfect fit  
Durable for long lasting comfort

**100%**  
Chlorine resistant

**HIGH-LEG CUT**  
Greater range of motion



**LIMITED EDITION**



>>> **SW4739907** <<<

**MULTICOLOR YELLOW**

34/36/38/40/42/44/46



>>> **SW4730402** <<<

**NAVY BLUE PINK**

34/36/38/40/42/44/46



>>> **SW4730107** <<<

**BLACK YELLOW**

34/36/38/40/42/44/46

**OTHER FEATURES:**

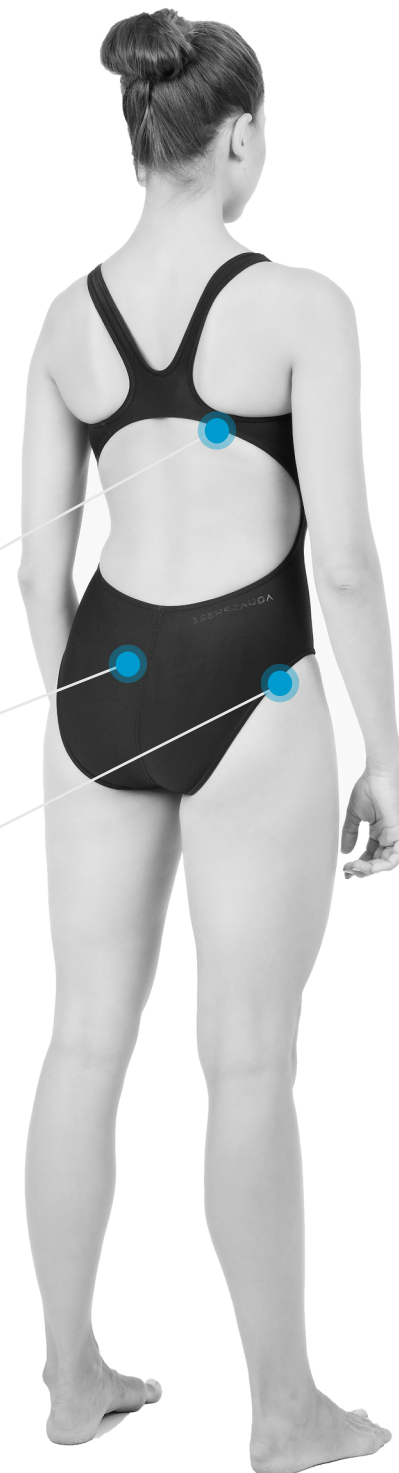
- Durable Fabric Elasticity
- Sustainable lining material
- X-Play sustainable fabric: 78% Recycled Polyester from post-consumer recycled PET bottle + 22% Elastolefin

\* Based on 1L bottle and size FR 36

# CLASSIC BACK

## ESSENTIALS

>>> The Essential Classic Back has been designed to assure long lasting comfort during swim training. Crafted with X-Play sustainable fabric, it allows high flexible fit guaranteeing greater range of motion. This training suit is made of 4 plastic bottles!\*



**CLASSIC BACK**  
Greater coverage & better stability

**100%**  
Chlorine resistant

**MIDDLE-LEG CUT**  
Greater coverage



>>> **SW4680107** <<<

**BLACK YELLOW**

36/38/40/42/44/46/48

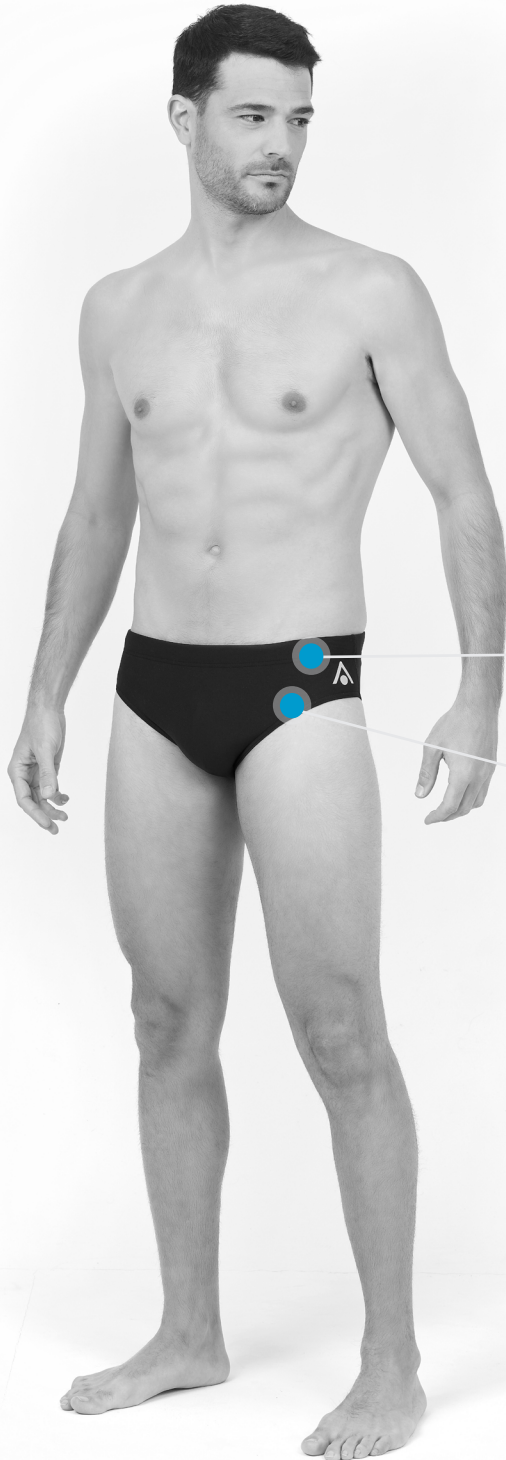
**OTHER FEATURES:**

- Durable Fabric Elasticity
- Double lining
- X-Play sustainable fabric: 78% Recycled Polyester from post-consumer recycled PET bottle + 22% Elastolefin

\*Based on 1L bottle and size FR 36

# BRIEF8CM

## ESSENTIALS



>>> The Essentials Brief 8cm has been designed to last through any intense training. Crafted with Sydney Eco sustainable fabric, it allows a compressive and breathable fit while guaranteeing long lasting comfort.

This training suit is made of 2 plastic bottles!\*



**100%**  
Chlorine resistant

**FULLY LINED**  
Long-lasting comfort

LIMITED EDITION

NEW

NEW



>>> **SM4749941** <<<  
**MULTICOLOR LIGHT BLUE**  
70/75/80/85/90/95



>>> **SM4740402** <<<  
**NAVY BLUE PINK**  
70/75/80/85/90/95



>>> **SM4749904** <<<  
**BLACK YELLOW**  
70/75/80/85/90/95

**OTHER FEATURES:**

- Durable Fabric Elasticity
- Adjustable inner draw cords
- Sydney Eco composition:  
51% Recycled Polyester from post-consumer recycled PET bottles + 49% polyester from PBT

\*Based on 1L bottle and size 85

# BRIEF 14CM

## ESSENTIALS

>>> The Essentials Brief 14cm has been designed to last through any intense training. Crafted with Sydney Eco sustainable fabric, it allows a compressive and breathable fit while guaranteeing long lasting comfort.

This training suit is made of 2 plastic bottles\*



CHLORINE PROOF



TWO-WAY STRETCH



RECYCLED YARN



PILLING RESISTANT



SHAPE RETENTION



BREATHABLE



**100%**  
Chlorine resistant

**FULLY LINED**  
Long-lasting comfort

LIMITED EDITION

NEW



>>> **SM4779941** <<<

MULTICOLOR LIGHT BLUE

70/75/80/85/90/95

NEW



>>> **SM4770402** <<<

NAVY BLUE PINK

70/75/80/85/90/95



>>> **SM4770107** <<<

BLACK YELLOW

70/75/80/85/90/95

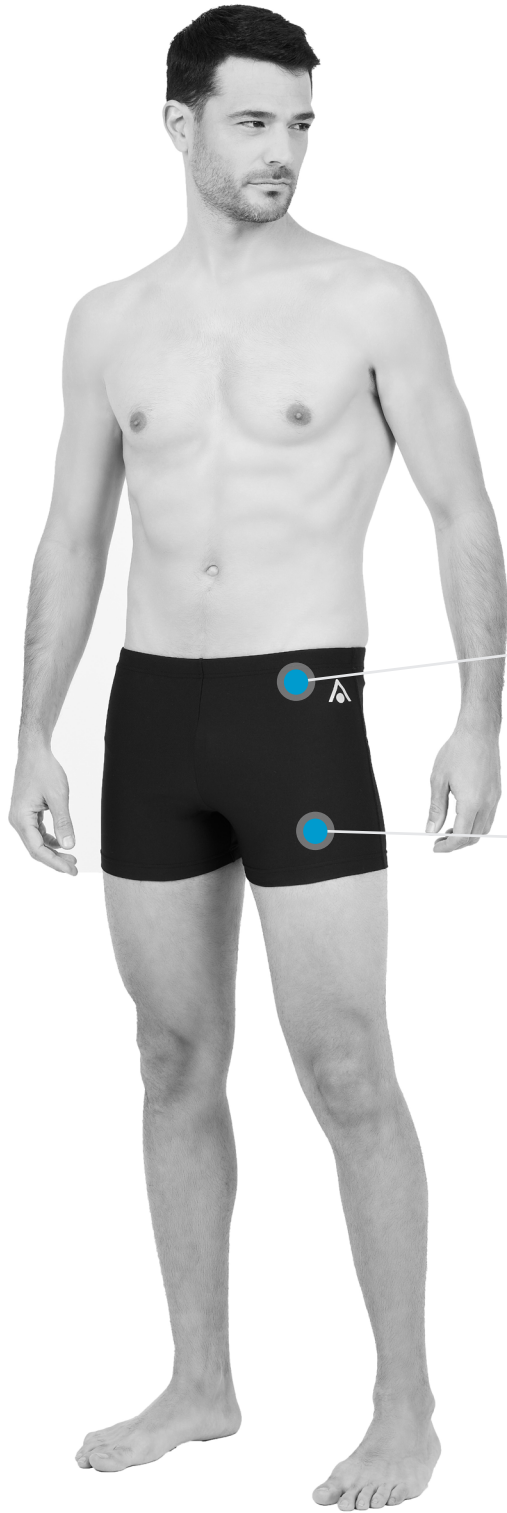
**OTHER FEATURES:**

- Durable Fabric Elasticity
- Adjustable inner draw cords
- Sydney Eco composition: 51% Recycled Polyester from post-consumer recycled PET bottles + 49% polyester from PBT

\* Based on 1L bottle and size 85

# BOXER

## ESSENTIALS



**100%**  
Chlorine resistant

**FULLY LINED**  
Long-lasting comfort

>>> The Essential Boxer has been designed to guarantee long lasting comfort during swim training



**CHLORINE PROOF**



**FOUR-WAY STRETCH**



**RECYCLED YARN**



**PILLING RESISTANT**



**SHAPE RETENTION**



**BREATHABLE**

**OTHER FEATURES:**

- Durable Fabric Elasticity
- Adjustable inner draw cords
- Xplay composition:  
78% Recycled Polyester from post-consumer recycled PET bottles  
+22% Elastolefin

\*Based on 1L bottle and size FR 36



>>> **SM4750107** <<<

**BLACK YELLOW**

70/75/80/85/90/95

# SIZING CHART

## MEN

### SWIMWEAR

SIZE		2XS	XS	S	M	L	XL
FR		70	75	80	85	90	95
UK / US		28	30	32	34	36	38
DE / A / CH		2	3	4	5	6	7
IT		42	44	46	48	50	52
HEIGHT	cm	141-152	153-165	166-172	173-179	180-183	184-186
	inches	55.5 - 59.8	60.2 - 64.9	65.3 - 67.7	68.1 - 70.5	70.9 - 72	72.4 - 73.2
WAIST	cm	73	75	80	85	90	95
	inches	28.5	29.5	31.5	33.5	35.5	37.5
WAIST	cm	88	90	95	100	105	110
	inches	34.5	35.5	37.5	39.5	41.5	43.5

## WOMEN

### SWIMWEAR

FR	34	36	38	40	42	44	46	48	
UK / US	28	30	32	34	36	38	40	42	
DE / A / CH	32	34	36	38	40	42	44	46	
IT	38	40	42	44	46	48	50	52	
HEIGHT	cm	168	170	172	174	176	178	180	182
	inches	66	66.9	67.7	68.5	69.3	70	70.8	71.6
CHEST	cm	81 - 84	85 - 90	91 - 95	96 - 100	101 - 105	106 - 110	111 - 115	116-120
	inches	32 - 33	33.5 - 35.5	36 - 37.5	38 - 39.5	40 - 41.5	41.5 - 43.5	43.5 - 45.5	45.5 - 47.2
WAIST	cm	62 - 65	66 - 70	71 - 75	76 - 80	81 - 85	86 - 90	91 - 95	96-100
	inches	24.5 - 25.5	26 - 27.5	28 - 29.5	30 - 31.5	32 - 33.5	34 - 35.5	36 - 37.5	37.8 - 39.4
HIPS	cm	88 - 90	91 - 95	96 - 100	101 - 105	106 - 110	111 - 115	116 - 120	121-125
	inches	34.5 - 35.5	36 - 37.5	37.5 - 39.5	39.5 - 41.5	41.5 - 43.5	43.5 - 45.5	45.5 - 47	47.6 - 49.2



# TRAINING GEAR & ACCESSORIES

Our commitment to innovation leads us to design tailored training equipment and accessories dedicated to developing specific workouts and muscle groups to achieve an individual's personal training requirements.

# TAKE CARE OF YOUR SWIM GOGGLES

## SEA-CLR ECO FRIENDLY ANTI-FOG



>>> SA2130040 <<<

SEA-CLR SPRAY

### FEATURES:

- Clean and restore plastic lenses for swim goggles
- Crystal vision and anti-fog guard
- Environmentally safe
- Physiologically safe
- Anti-fog
- Scratch-resistant
- No eye irritation
- Reef safe formula
- Made in Italy
- 35mL

## SWIM MASK AND GOGGLE CASE EYEWEAR STORAGE CASE



>>> ST1750141 <<<

SWIM MASK CASE  
110 X 230 MM



>>> ST1760106 <<<

SWIM GOGGLE CASE  
80 X 190 MM

### FEATURES:

- Fits and protects all your small accessories
- Two inner pocket for valuables (anti-fog, nose clip, ear plugs...)
- 3D mesh for ventilation against moisture
- EVA thermoformed case to protect and resist against impacts

# TRANSITION BACKPACK

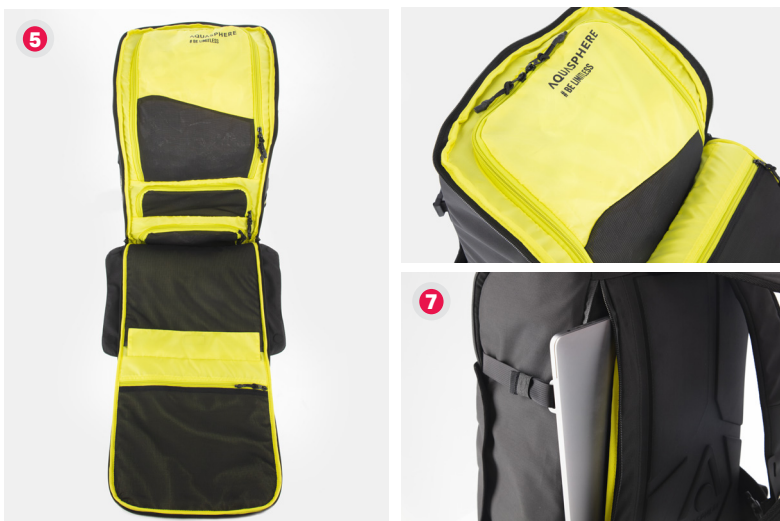
## TRIATHLON BAG 35L



Organisation is key to shaving time off your transitions. The Transition bag provides dedicated spaces for all your race day and travel essentials, including 2 shoe compartments, wet bag for your suit, helmet hanger, Bike-Pump securing strap, accessory pocket for goggles and small items, expandable side pocket fitting 2 water bottles and a handy padded laptop slot. The adjustable chest and waist belt coupled with a breathable Thermoformed back panel ensure an ultra-comfortable fit before, during, and after your triathlon.



- 1 STAND ALONE STRUCTURE**  
*Stays upright for easy loading*
- 2 THERMOFORMED BACKPANEL**  
*Increases air flow for greater ventilation and ultimate comfort*
- 3 DRY BAG 40X30CM**  
*To store your wet items*
- 4 ADJUSTABLE CHEST AND WAIST BELTS**  
*For perfect fit and comfort*
- 5 MULTIPLE STORAGE POCKETS**  
*For greater items organisation*
- 6 BIKE PUMP SECURING STRAPS**  
*Easily access and store your pump*
- 7 PADDED LAPTOP COMPARTMENT**  
*Store and protect your device, side zipped access - fits most of 15 inches laptops*
- 8 HELMET HANGER**  
*Securing hook on the front of the bag*



**>>> BA2000171 <<<**

**BLACK & BRIGHT YELLOW**

32 X 52 X 22 CM

**FEATURES:**

- Includes dry bag; store your wet items
- Chest and waist belts; perfect fit
- Magnetic closure
- Cloth hanger



# POOL BACKPACK

## EQUIPMENT BAG 30L

>>> Stay prepared for your next swim session or competition with the Pool Backpack. Featuring a stand-alone structure for accessibility, a handy removable dry bag for your wet kit, and plenty of storage compartments to keep everything organized.



- 1 STAND ALONE STRUCTURE**  
*Stays upright for easy loading*
- 2 THERMOFORMED BACKPANEL**  
*Increases air flow for greater ventilation and ultimate comfort*
- 3 DRY BAG 40X30CM**  
*To store wet gear*
- 4 STORAGE COMPARTMENTS**  
*Fits all swimgear and lifestyle items (swimwear, kickboard, snorkel, fins)  
1 inside zip pocket  
1 elastic mesh pocket*



>>> **BA2040171** <<<

**BLACK & BRIGHT YELLOW**

32 X 52 X 18 CM

**FEATURES:**

- Side pocket: fits 2 bottles (1L each)
- Padded laptop compartment (up to 16 inches): store and protect your device, side zipped access
- Chest belt: perfect fit and comfort
- Clothes clip

# GEAR MESH BACKPACK

EQUIPMENT BAG 30L



**RIGID ROLL TOP OPENING**

*For easy loading*

**MESH FABRIC**

*Allows maximum breathing and quick drying*

**POLYESTER 210D PU RIPSTOP**

*Lightweight and resistant to heavy loading*



>>> **SA2170401** <<<

**NAVY BLACK**

55 X 36 X 15,5 CM

**FEATURES:**

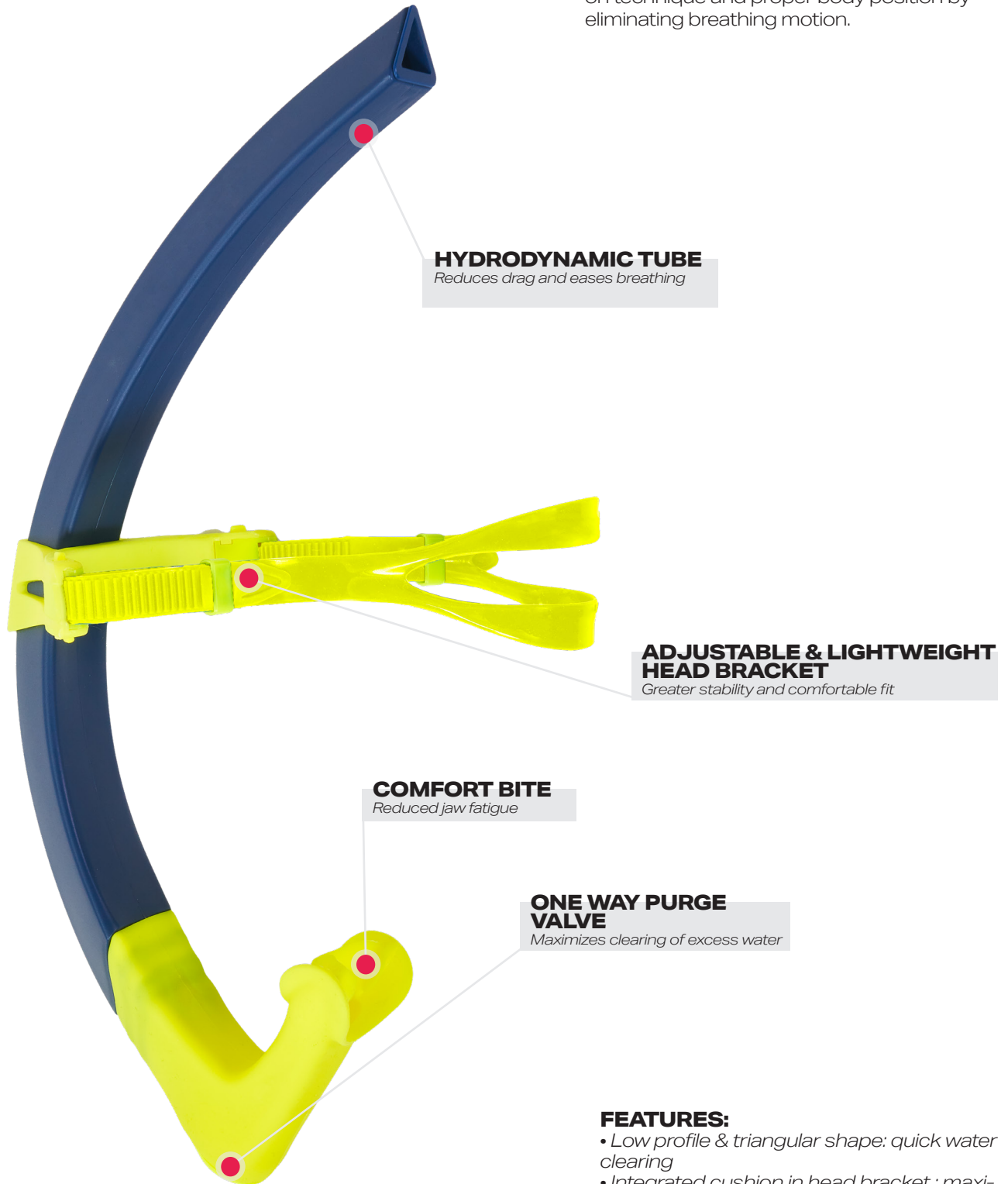
- Fits all your wet equipment (pull buoy, kickboard, focus snorkel...)
- 2 ways of closing: from the top or on the side to adapt to the volume of your equipment.
- Adjustable shoulder straps: allows to wear as backpack for comfort.
- One outside zip pocket: store your small accessories (eyewear, nose clip, ear plugs...)
- One outside mesh bottle pocket



# FOCUS SNORKEL

SWIM TRAINING SNORKEL

>>> The Focus swim training snorkel features a unique, low-profile design that has been engineered for maximum comfort and durability, allowing the swimmer to focus solely on technique and proper body position by eliminating breathing motion.



**HYDRODYNAMIC TUBE**

*Reduces drag and eases breathing*

**ADJUSTABLE & LIGHTWEIGHT HEAD BRACKET**

*Greater stability and comfortable fit*

**COMFORT BITE**

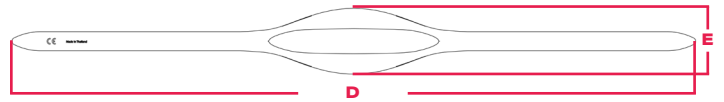
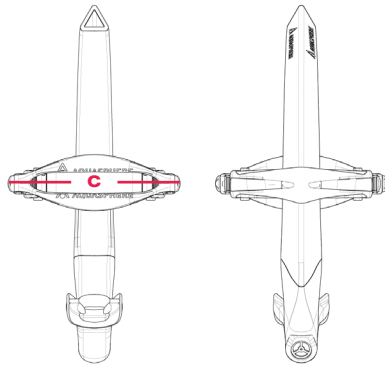
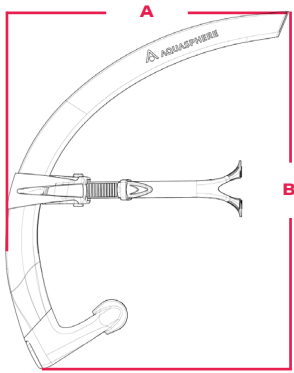
*Reduced jaw fatigue*

**ONE WAY PURGE VALVE**

*Maximizes clearing of excess water*

**FEATURES:**

- Low profile & triangular shape: quick water clearing
- Integrated cushion in head bracket : maximum comfort
- Silicone piece for the palate inspired from scuba diving: greater stability and comfort
- Soft silicone mouth piece: minimize jaw fatigue



OUR SIZES	SMALL FIT	REGULAR FIT
<b>A - WIDTH (CM)</b>	25.5	27.5
<b>B - HEIGHT (CM)</b>	33.9	34.9
<b>C - BASE WIDTH (CM)</b>	12.1	14
<b>D - STRAP WIDTH (CM)</b>	57.6	57.6
<b>E - STRAP HEIGHT (CM)</b>	5.5	5.5



>>> **ST1720471** <<<

**NAVY BRIGHT YELLOW**

REGULAR FIT



>>> **ST1720110** <<<

**BLACK GREY**

REGULAR FIT



>>> **ST1730471** <<<

**NAVY BRIGHT YELLOW**

SMALL FIT



>>> **ST1730110** <<<

**BLACK GREY**

SMALL FIT

# REPLACEMENT PARTS



>>> **ST1791000M** <<<

**MOUTH PIECE GREY**

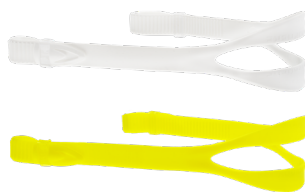
REGULAR FIT



>>> **ST1790700M** <<<

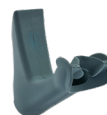
**MOUTH PIECE YELLOW**

REGULAR FIT



>>> **ST1800709** <<<

**STRAPS PACK**  
1 WHITE + 1 YELLOW



>>> **ST1791000S** <<<

**MOUTH PIECE GREY**

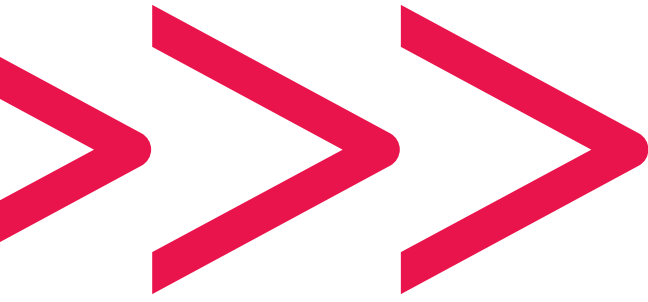
SMALL FIT



>>> **ST1790700S** <<<

**MOUTH PIECE YELLOW**

SMALL FIT



# PULLBUOY

UPPER BODY CONDITIONING



>>> **ST1520471** <<<

**NAVY BRIGHT YELLOW**

**FEATURES:**

- Maximizes upper body workout by immobilizing the legs
- Isolates the arm motion to improve stroke form, strengthen and tone
- High density EVA foam with an ergonomic shape
- Durable and will not waterlog

# KICKBOARD

LOWER BODY CONDITIONING

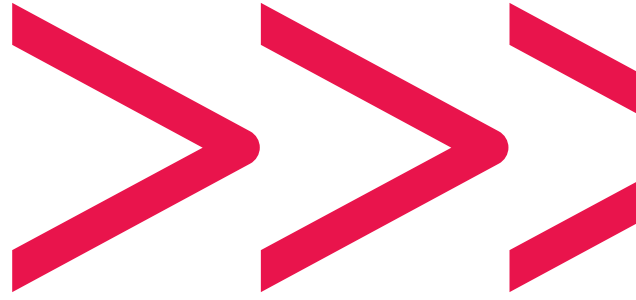


>>> **ST1740471** <<<

**NAVY BRIGHT YELLOW**

**FEATURES:**

- Maximizes lower body workout by immobilizing the upper body
- High density EVA foam
- Textured to protect against scratches
- Durable and will not waterlog



# ZIP VX

**INCREASE THRUST AND BODY POSITION**



>>> **FA3790401** <<<  
**BLUE & BLACK**  
S/M/L



>>> **FA3790101** <<<  
**BLACK**  
S/M/L

**FEATURES:**

- Leverages natural kicking motion
- Hole in the blade for increased thrust
- Narrow blade improves kicking mechanics
- Easy-adjust buckles for a custom fit
- Non-slip pads on fin rails provide traction

USA	EU	SIZE
M 4-7   W 5-8	35-40	S
M 7-10   W 8-11	40-44	M
M 10-13   W 11-14	44-48	L

# MICROFIN

**LEG WORKOUT**



>>> **FA3250101** <<<  
**BLACK / BLACK**  
XS/S/M/L/XL/XXL



>>> **FA3250701** <<<  
**YELLOW / BLACK**  
XS/S/M/L/XL/XXL

**FEATURES:**

- Rigid sole helps prevent cramping
- Closed foot pocket made of durable and ultrasoft TPR polymer
- Anti-slip rubber pads for grip on slippery surfaces
- Improves technique
- Muscles reinforcement

USA	EU	SIZE
4-5	36-37	XS
5-6	38-39	S
6-7	40-41	M
8-9	42-43	L
9 <sup>1</sup> / <sub>2</sub> -10 <sup>1</sup> / <sub>2</sub>	44-45	XL
11-12	46-47	XXL

# SWIMGLOVES

LOW IMPACT RESISTANCE



>>> SA2230171 <<<

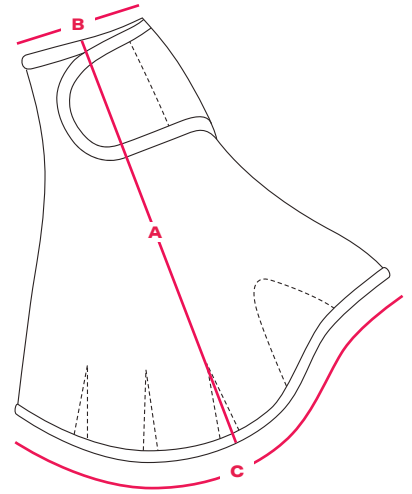
BLACK & BRIGHT YELLOW

S/M/L

**FEATURES:**

- Neoprene construction: comfort and flexibility
- Webbed fingers: low impact resistance
- Help build upper body strength
- Hook & loop wrist closure: perfect fit
- Quick drying
- Reinforced stitches

		S	M	L	TOL +/-
A	HEIGHT	21.5	22.5	23.5	1
B	BOTTOM WIDTH	5.5	6	6.5	0.5
C	TOP WIDTH	22.5	23	26	1



# DRY TOWEL



>>> SA2211010 <<<

GREY

34X44CM



>>> SA2214141 <<<

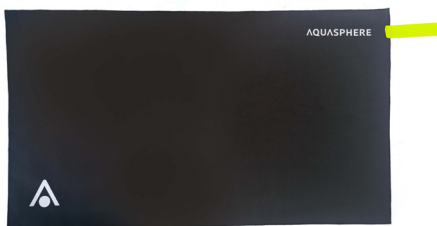
LIGHT BLUE

34X44CM

**FEATURES:**

- Super-absorbent
- Fast drying
- Lightweight and soft material
- Double sided printed
- Composition: 90% PVA sponge + 10% polyester
- Includes PET storage bottle

# MICROTOWEL



>>> SA2250109 <<<

BLACK & WHITE

80X40CM

**FEATURES:**

- Ultra absorbent
- Ultra soft
- Composition: 89% polyester + 11% nylon
- Ultra soft micro fiber

# TRICAP

ADULT SWIM CAP



>>> SA1280109 <<<  
SA128EU0109  
BLACK WHITE



>>> SA1287110 <<<  
SA128EU7110  
BRIGHT YELLOW GREY

**FEATURES:**

- Designed for training and competition
- Semi-formed shape
- Durable chlorine-resistant silicone

# PLAINCAP

ADULT SWIM CAP

LIMITED EDITION



>>> SA2129907 <<<  
SA212EU9907  
MULTICOLOR YELLOW



>>> SA2124009 <<<  
SA212EU4009  
BLUE WHITE

**FEATURES:**

- Designed for training and competition
- Durable chlorine-resistant Silicone



>>> SA2120109 <<<  
SA212EU0109  
BLACK WHITE



>>> SA2123209 <<<  
SA212EU3209  
DARK GREEN WHITE



>>> SA2120901 <<<  
SA212EU0901  
WHITE BLACK



>>> SA2120601 <<<  
SA212EU0601  
RED BLACK

# AQUACOMFORT

ADULT SWIM CAP



>>> SA216EU0101 <<<  
BLACK

**FEATURES**

- Adjustable, ultra-lightweight and comfortable for the casual aquatic enthusiast
- Adjustable headband
- Ultra lightweight, quick-drying and durable
- 90% Polyester, 10% Rubber





