

BUYER'S GUIDE 2025

WQUASPHERE

EYEWEAR	P.6
WETSUITS	P.42
SWIMWEAR	P.62
SWIM EQUIPMENT & ACCESSORIES	P.72

YOUR PLAYGROUND. YOUR CHALLENGES. BE LIMITLESS.

BORN IN 1998

Inspired by years of working in the scuba diving industry, it took the Italian engineers, P. Ferraro and G. Beltrani, two years of experimenting, testing and prototyping to finally patent the first curved lens with no visibility distortion: the Seal swim mask.

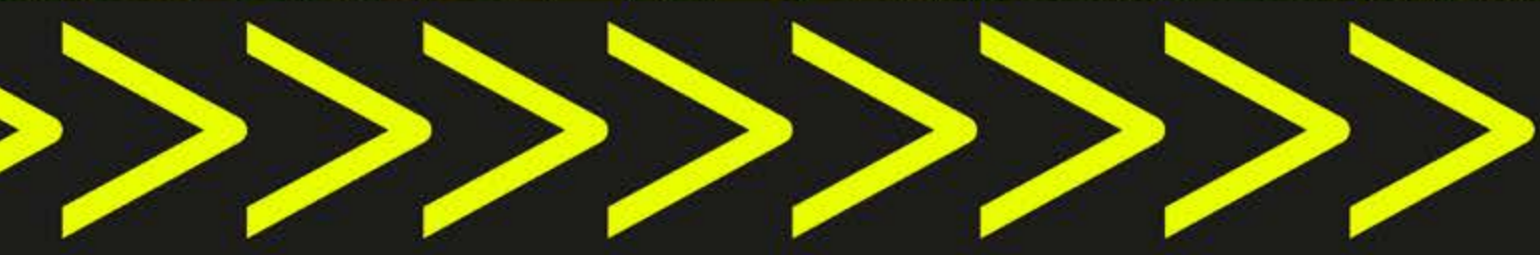
FROM CREATIVE INGENUITY TO PERFORMANCE

Sharpened over more than 30 years of research, Aquasphere's craftsmanship excellence is based on purposefully advanced and patented technologies, high-quality materials and driven by our swimming community.

AUTHENTIC PASSION

Whatever the playground, we gear the free-spirited swimmer and celebrate each individual in their pursuit of achievement.

It's **not just swimming**.
It's about **breaking your personal barriers** and reaching **new horizons**.
It's about **embracing your individuality** while sharing **your PASSION**.
It's the **right to be real**, to be BOLD.



EXOCET.ULTRA

OPEN WATER WETSUIT



45
XX
YAMAMOTO 45

3 SHIELD

COLLAR FUSE

REFLECTIVE PRINT

CONQUER THE OPEN WATER

CHALLENGE DRIVEN

Our passion for purposeful driven and innovative swim eyewear, keeps inspiring us to elevate our products to enhance our swimmers experience.



EYEWEAR

Lens for EVERY CONDITION

SUNNY

PARTIALLY SUNNY

INDOOR CLOUDY

> PHOTOCROMATIC

light transmission 27%-78%

SILVER TITANIUM
> MIRRORING

light transmission 8%-13%*

BROWN
> POLARIZED

light transmission 11%

YELLOW TITANIUM
> MIRRORING

light transmission 9%-12%*

INDIGO TITANIUM
> MIRRORING

light transmission 16%-26%*

BLUE TITANIUM
> MIRRORING

light transmission 18%-27%*

RED TITANIUM
> MIRRORING

light transmission 20%-43%*

> SMOKE

light transmission 27%-53%*

RED IRIDESCENT
> MIRRORING

light transmission 48%

BLUE
> TINTED

light transmission 58%

> CLEAR

light transmission 88%-92%*

*depending on the model

LENS TECHNOLOGY

A full assortment of performance-engineered lenses in a wide range of tints to enhance our swimmers experience.



PHOTOCHROMATIC ☁️☀️

- Adapts to all conditions
- Changes with level of UV
- Improves visual comfort
- VLT : 27% to 78%



SILVER TITANIUM MIRRORED ☀️

- Ultimate light protection
- Keeps neutral color
- Reduced eye strain
- VLT : 8% - 13%
- Lens base : Smoke



BROWN POLARIZED ☀️

- Ultimate glare cut
- Reduced eye strain
- Improved visual acuity
- Enhanced warm tints
- VLT : 11%
- Lens base : Clear



YELLOW TITANIUM MIRRORED ☀️

- Ultimate light protection
- Reduced glare
- Enhanced contrast
- Enhanced blue tints
- VLT : 9% - 12%
- Lens base : Smoke



INDIGO TITANIUM MIRRORED ☀️

- Increased glare reduction
- Enhanced yellow and orange tints
- Greater visual acuity
- VLT : 16% - 26%
- Lens base : Smoke



BLUE TITANIUM MIRRORED ☀️

- Increased glare reduction
- Enhanced yellow and orange tints
- Greater visual acuity
- VLT : 18% - 27%
- Lens base : Smoke



RED TITANIUM MIRRORED ☀️

- Enhanced depth perception
- Reduced color saturation
- Reduced eye strain
- VLT : 20% - 43%
- Lens base : Smoke



SMOKE ☀️

- Increased light protection
- Maintains natural color saturation
- VLT : 27% - 53%



RED IRIDESCENT MIRRORED ☀️🏠

- Enhanced depth perception
- Reduced eye strain
- Keeps natural contrasts
- VLT : 48%
- Lens base : Pink



BLUE TINTED ☁️🏠

- Improved color perception
- Keeps visual comfort
- VLT : 58%



CLEAR ☁️🏠

- Transmits natural light
- Maximized clarity
- VLT : 88% - 92%

	CLEAR	TINTED	IRIDESCENT	PHOTO CHROMATIC	SMOKE	POLARIZED	TITANIUM MIRRORED									
							RED	INDIGO	BLUE	YELLOW	SILVER					
CONDITIONS	☁️☀️	☁️	☀️🏠	☁️☀️	☀️	☀️	☀️	☀️	☀️	☀️	☀️					
DEFY.ULTRA					☀️			☀️			☀️	☀️	☀️			
VISTA	☀️				☀️											
VISTA XP	☀️				☀️											
KAYENNE PRO	☀️			☀️	☀️	☀️										☀️
KAYENNE	☀️			☀️	☀️	☀️										
XCEED			☀️		☀️							☀️	☀️	☀️		
FASTLANE	☀️				☀️			☀️	☀️	☀️						
SEAL 2.0	☀️				☀️											
KAIMAN	☀️	☀️			☀️											
KAIMAN COMPACT	☀️	☀️			☀️											
MAKO	☀️	☀️			☀️											
VISTA JR	☀️	☀️			☀️											
SEAL KID	☀️	☀️			☀️											
KAYENNE JR	☀️	☀️			☀️											
MOBY KID	☀️	☀️			☀️											

Light Transmission may vary depending on skus.
VLT : Visual Light Transmission

LENS FEATURES



A combined spherical and cylindrical lens for revolutionary distortion-free panoramic vision. Lateral and vertical sight like never before.

AVAILABLE FOR: DEFY, ULTRA



CURVED LENS

Premium optical engineering and three critically placed radii let you experience a wide field of vision.



ANTI-FOG

Durable anti-fog treatment for guaranteed clearer vision. Use our eco-friendly anti-fog solution Sea-Clr Antifog spray for extra protection.



LIGHT PROTECTION

Embedded within the lens material (polycarbonate and plexisol), the properties of our lenses protect your eyes from harmful rays.

FRAME FEATURES



Cool silicone injected directly onto the lens creates an ultra-light frameless construction for a ground-breaking hydrodynamic shape.

AVAILABLE FOR: DEFY, ULTRA.



PRECISION FIT TECHNOLOGY

Ultra-thin silicone provides the perfect fit, contouring to every face shape for a comfortable, leak-free seal.

AVAILABLE FOR: DEFY, ULTRA.



ADVANCED FIT TECHNOLOGY

The dual texture and dual-density soft grip on the face reduces skin marks while ensuring a watertight seal for focused performance.

AVAILABLE FOR: KAYENNE PRO, KAIMAN EXO, SEAL 2.0.



Bi-material frame technology combines exceptional stability with maximum comfort. A semi-rigid exoskeleton protects the lens with an integrated structure, while the ultra-soft Softeril material creates a streamlined, lightweight design.

AVAILABLE FOR: XCEED, KAIMAN EXO.



ADJUSTABLE NOSE BRIDGE

The adjustable nose bridge ensures a snug, leak-free seal that adapts to any face shape.

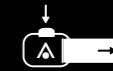
AVAILABLE FOR: KAYENNE PRO, XCEED, FASTLANE.



QUICK FIT BUCKLE 2.0

An integrated rotating buckle attaching the strap to the lens for a quick and efficient fine-tuned fit.

AVAILABLE FOR: DEFY, ULTRA.



QUICK FIT

Easy push button to tighten or loosen your goggles while still wearing them.

AVAILABLE FOR: VISTA, VISTA XP, KAYENNE PRO, KAYENNE, VISTA JUNIOR.



E-Z ADJUST

Low profile strap allows for precise adjustment. Simply pull the straps back to your desired level of tension for a leak free fit or lift the buckle tabs and pull the goggle forward to loosen.

AVAILABLE FOR: KAIMAN EXO, KAIMAN, KAIMAN COMPACT SEAL 2.0, MAKO, KAYENNE JUNIOR, EAGLE, SEAL KID, MOBY KID.



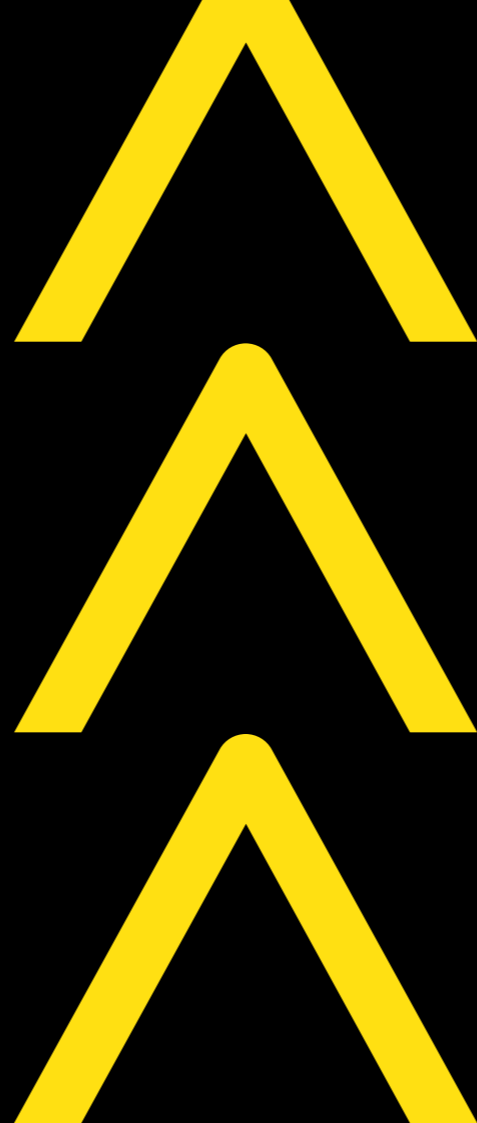
DEFY.Ultra



reddot winner 2023

PERFORMANCE

INFINITE VISION



DUOCURVE

- Revolutionary combination of spherical and cylindrical curved lenses.
- Enhances panoramic vision & provides distortion-free clarity.

COOLINJECT FRAMELESS

- Innovative technique: cool silicone injected directly onto the lens, creating an ultralight frameless construction.
- Increases hydrodynamics and reduces drag.

SUNNY



MS5420171LMY

YELLOW TITANIUM MIRRORED

DEFY. ULTRA BLACK BRIGHTYELLOW LMY

V.L.T : 12%

NEW



MS5420171LMB

INDIGO TITANIUM MIRRORED

DEFY. ULTRA BLACK BRIGHTYELLOW LMB

V.L.T : 26%



MS5420171LMS

SILVER TITANIUM MIRRORED

DEFY. ULTRA BLACK BRIGHTYELLOW LMS

V.L.T : 13%

PARTIALLY SUNNY



MS5420171LD

SMOKE

DEFY. ULTRA BLACK BRIGHTYELLOW LD

V.L.T : 30%

>>> Experience infinite vision and conquer open waters with the Defy.Ultra. Our new swim mask features an all-new DuoCurve lens, offering panoramic vision both laterally and vertically, ultra-thin silicone Precision Fit Technology skirt for a comfortable, leak-free seal and a groundbreaking ultra-light frameless design thanks to our Cool Inject Technology for reduced drag in the water. Prepare to lock in your new personal best time with a low-profile hydrodynamic design and the Quick Fit Buckle 2.0 on the strap.



OTHER FEATURES:



LOW PROFILE
Wider field of vision.



P.F.T PRECISION FIT TECHNOLOGY
Ultra-thin silicone for ultimate fit and comfort.



QUICK FIT BUCKLE 2.0
Quick and secure adjustment.



THERMOFORMED NOSE PIECE
Reduced drag.



LATEX FREE

VISTA

ACTIVE



>>> Popular with Open Water Swimmers ready for a challenge, the Vista is a durable silicone mask made for unpredictable environments. Vista's low profile reduces the drag experienced with other swimming masks. Its soft silicone skirt, and quick fit buckle, you are ensured a comfortable, custom fit to focus on your swim, not your gear.

QUICK FIT BUCKLE
Provides perfect fit & easy adjustments

SILICONE COMFORTABLE SKIRT
Assures leak resistant seal

LATEX FREE

CURVED LENS GEOMETRY
Provides wide field of vision

>>> **OTHER FEATURES:**
• Distortion free vision
• Antiscratch

PARTIALLY SUNNY



>>> **MS5600915LD** <<<
SMOKE
VISTA.A1 WHITE RED LD
V.L.T : 27%



>>> **MS5600012LD** <<<
SMOKE
VISTA.A1 TRP DGY LD
V.L.T : 27%

INDOOR CLOUDY



>>> **MS5600915LC** <<<
CLEAR
VISTA.A1 WHITE RED LC
V.L.T : 88%



>>> **MS5600916LC** <<<
CLEAR
VISTA.A1 WHITE RASPBERRY LC
V.L.T : 88%



>>> **MS5600012LC** <<<
CLEAR
VISTA.A1 TRP DGY LC
V.L.T : 88%



>>> **MS5604340LC** <<<
CLEAR
VISTA.A1 TBL BLU LC
V.L.T : 88%

VISTA XP

ACTIVE

>>> The Vista XP swim mask is the perfect addition to your open water training. Take off with confidence thanks to the ultra-flexible Softeril skirt, providing a secure seal and ensuring you lasting comfort during both quick and long swim sessions. Experience visual clarity and a wide field of vision under the water with the single lens, as well as quick and easy adjustments using the Quick Fit buckle.



**SOFTERIL
ULTRA SOFT SKIRT**
For maximum comfort



SINGLE LENS
Provides wide field of vision



>>> **OTHER FEATURES:**

- Antiscatch
- Softeril contains TPR

**PARTIALLY
SUNNY**



>>> **MS5640001LD** <<<

SMOKE

VISTA XPA1 TRP BLACK LD
V.L.T : 27%

**INDOOR
CLOUDY**



>>> **MS5644009LC** <<<

CLEAR

VISTA XPA1 BLUE WHITE LC
V.L.T : 92%



>>> **MS5640006LC** <<<

CLEAR

VISTA XPA1 TRP RED LC
V.L.T : 92%

KAYENNE PRO

PERFORMANCE

>>> The Kayenne Pro, featuring an adjustable nose bridge with 4 interchangeable sizes and a superior fitting AFT leak-resistant seal, is perfect for any triathlete looking to up their game. Keep markers in sight using Curved Lens Geometry technology and our oversized Plexisol lens for an exceptional peripheral vision with increased upper visibility. Start every race with confidence thanks to the high performance ultra-light frame and a Quick Fit Buckle.

A·F·T

AFT: ADVANCED FIT TECHNOLOGY
Provides a leak resistant seal



QUICKFIT BUCKLE
Provides perfect fit & easy adjustments



CURVED LENS GEOMETRY
Provides wide field of vision



ADJUSTABLE NOSE BRIDGE
With 4 interchangeable size options for a perfect fit



>>> **OTHER FEATURES:**

- Ultra soft softeril skirt: for maximum comfort, softeril contains TPR
- Oversized plexisol lens: increase upper visibility
- Wide gasket: improve stability
- Antiscratch

PARTIALLY SUNNY
CLOUDY

ADAPTIVE V.L.T



>>> **EP3210171LPH** <<<
PHOTOCHROMATIC
KAYENNE PRO.A1 BLK BR. YLW LPH
V.L.T : 27% to 78%

SUNNY



>>> **EP3210910LP** <<<
BROWN POLARIZED
KAYENNE PRO.A1 WHT GRY LPB
V.L.T : 11%



>>> **EP3210010LMS** <<<
SILVER TITANIUM MIRRORRED
KAYENNE PRO.A1 TRP GRY LMS
V.L.T : 13%

PARTIALLY SUNNY



>>> **EP3210010LD** <<<
SMOKE
KAYENNE PRO.A1 TRP GRY LD
V.L.T : 27%

INDOOR CLOUDY

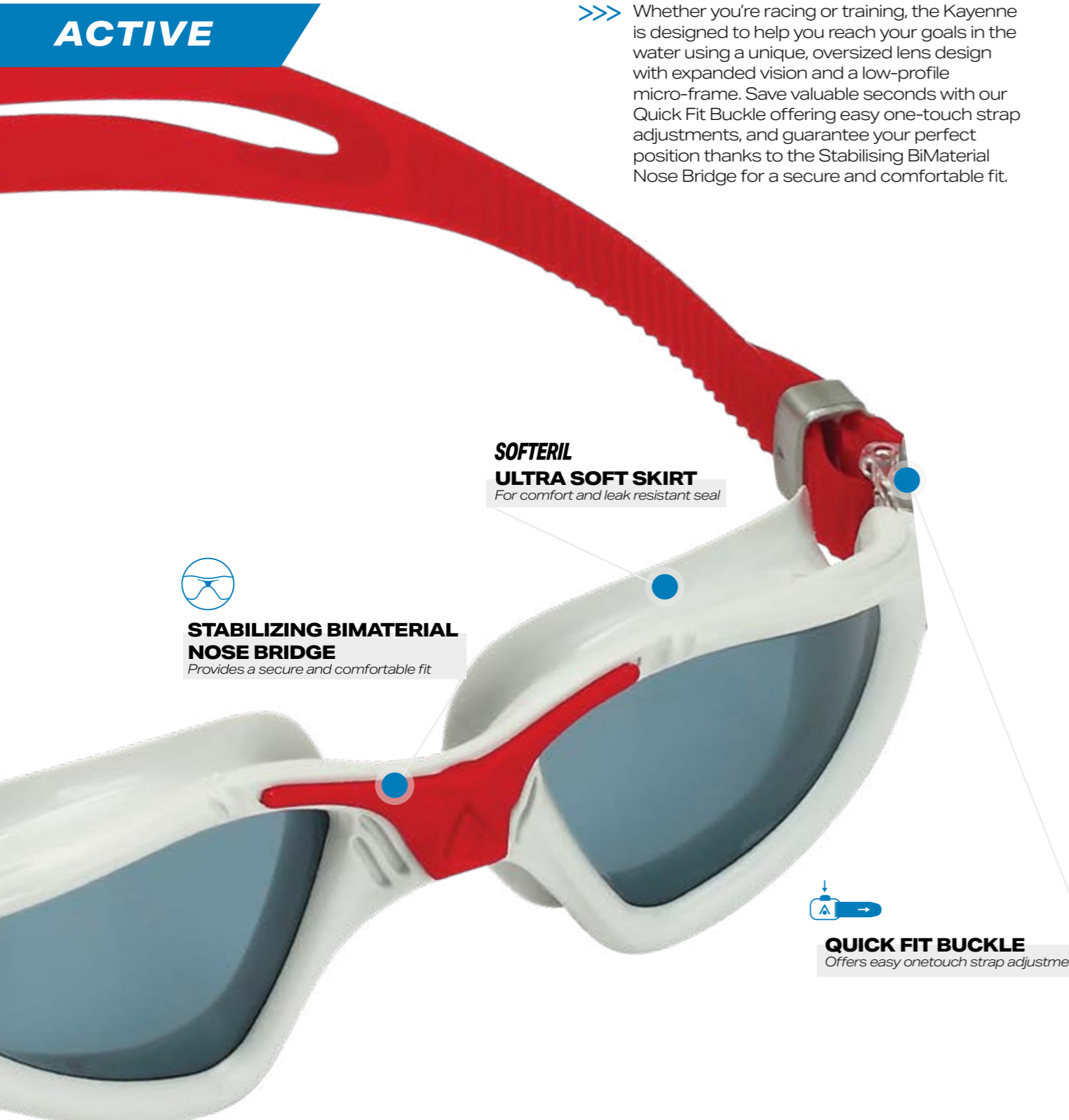


>>> **EP3210010LC** <<<
CLEAR
KAYENNE PRO.A1 TRP GRY LC
V.L.T : 92%

KAYENNE

ACTIVE

>>> Whether you're racing or training, the Kayenne is designed to help you reach your goals in the water using a unique, oversized lens design with expanded vision and a low-profile micro-frame. Save valuable seconds with our Quick Fit Buckle offering easy one-touch strap adjustments, and guarantee your perfect position thanks to the Stabilising BiMaterial Nose Bridge for a secure and comfortable fit.



**SOFTERIL
ULTRA SOFT SKIRT**
For comfort and leak resistant seal

**STABILIZING BIMATERIAL
NOSE BRIDGE**
Provides a secure and comfortable fit

QUICK FIT BUCKLE
Offers easy onetouch strap adjustments



- >>> **OTHER FEATURES:**
- Distortion free vision
 - Antiscratch
 - Softeril contains TPR

**PARTIALLY SUNNY
CLOUDY**

ADAPTIVE V.L.T



>>> **EP3141203LPH** <<<
PHOTOCHROMATIC
KAYENNE.A1 DK GRY GRN LPH
V.L.T : 27% to 78%

SUNNY



>>> **EP3141008LPB** <<<
BROWN POLARIZED
KAYENNE.A1 GRY ORG LPB
V.L.T : 11%

**PARTIALLY
SUNNY**



>>> **EP3140115LD** <<<
SMOKE
KAYENNE.A1 BLK SLV LD
V.L.T : 27%



>>> **EP3140098LD** <<<
SMOKE
KAYENNE.A1 TR SILVER PETR LD
V.L.T : 27%



>>> **EP3141006LD** <<<
SMOKE
KAYENNE.A1 GREY RED LD
V.L.T : 27%

**INDOOR
CLOUDY**



>>> **EP3140115LC** <<<
CLEAR
KAYENNE.A1 BLK SLV LC
V.L.T : 92%



>>> **EP3140098LC** <<<
CLEAR
KAYENNE.A1 TR SILVER PETR LC
V.L.T : 92%



>>> **EP3140001LC** <<<
CLEAR
KAYENNE.A1 TRP BLK LC
V.L.T : 92%

XCEED

PERFORMANCE



ADJUSTABLE NOSE BRIDGE

With 4 interchangeable size options for a perfect fit

>>> The XCEED combines curved lens technology and a hydrodynamic low profile fit to give swimmers a competitive edge in perfect clarity. Featuring Exo-Core technology, for maximum comfort, stability and flexibility, the XCEED is a popular Racing and Training partner of many competitive swimmers.



EXO CORE

TECHNOLOGY
Provides stability and great hydrodynamics



CURVED LENS GEOMETRY

Provides wide field of vision

SOFTERIL

ULTRA SOFT SKIRT
For maximum comfort



LATEX FREE



>>> OTHER FEATURES:

- Distortion free vision
- Antiscratch
- Softeril contains TPR



SUNNY



>>> EP3200109LMS <<<

SILVER TITANIUM MIRRORED
XCEED.A1 BLK BLK WHT LMS
V.L.T : 8%



>>> EP3200101LMY <<<

YELLOW TITANIUM MIRRORED
XCEED.A1 BLK BLK BLK LMY
V.L.T : 9%



PARTIALLY SUNNY



>>> EP3200109LD <<<

SMOKE
XCEED.A1 BLK BLK WHT LD
V.L.T : 27%



PARTIALLY SUNNY INDOOR



>>> EP3200101LMR <<<

RED IRIDESCENT MIRRORED
XCEED.A1 BLK BLK BLK LMR
V.L.T : 48%

FASTLANE

ACTIVE

>>> Turn your pool training sessions up a notch with our Fastlane swim goggles. Improve your stroke and keep building strength in total comfort thanks to the ultra-soft silicone skirt, offering the best in durability and fit. The Stable Strap System keeps your goggles in place while at the same time allowing for quick adjustments on the go. Top that off with the interchangeable nose bridge, and you're guaranteed the perfect fit.



SILICONE

ULTRA SOFT INNEREYE GASKET
Assures comfort and leak resistant seal



STABLE STRAP SYSTEM
Offers quick adjustments



ADJUSTABLE NOSE BRIDGE
With 4 interchangeable size options for a perfect fit

SUNNY



>>> **EP3170910LMS** <<<
SILVER TITANIUM MIRRORRED
FASTLANE.A1 WHITE GREY LMS
V.L.T : 13%



>>> **EP3174009LMB** <<<
BLUE TITANIUM MIRRORRED
FASTLANE.A1 BLUE WHITE LMB
V.L.T : 18%



>>> **EP3170406LMR** <<<
RED TITANIUM MIRRORRED
FASTLANE.A1 NAVY BLUE RED LMR
V.L.T : 39%

PARTIALLY SUNNY



>>> **EP3179898LD** <<<
SMOKE
FASTLANE.A1 PETROL PETROL LD
V.L.T : 27%

INDOOR CLOUDY



>>> **EP3170471LC** <<<
CLEAR
FASTLANE.A1 NVY BRIGHT YLW LC
V.L.T : 88%



>>> **OTHER FEATURES:**
• Antiscratch

SEAL 2.0

ACTIVE

>>> Keep improving your fitness levels and take on your next swim sessions in our Seal 2.0 swim mask. Stay focused in the water with the superior fitting AFT leak-resistant seal and an ultra-comfortable silicone skirt designed to fit a wide variety of face shapes. You can also keep your mask fitting snug thanks to the easily adjustable buckle and split silicone strap.



A·F·T

AFT: ADVANCED FIT TECHNOLOGY

Provides a leak resistant seal

SILICONE

COMFORTABLE SKIRT

Fits a wide variety of faces for maximum comfort



EZ ADJUST BUCKLES WITH SILICONE SPLIT STRAP

For quick and easy fit adjustments

PARTIALLY SUNNY



>>> MS5620103LD <<<

SMOKE

SEAL 2.0.A1 BLK GRN LD
V.L.T : 27%

INDOOR CLOUDY



>>> MS5624109LC <<<

CLEAR

SEAL 2.0.A1 LBL WHT LC
V.L.T : 92%



>>> MS5620110LC <<<

CLEAR

SEAL 2.0.A1 BLK GRY LC
V.L.T : 92%



LATEX FREE

>>> OTHER FEATURES:

- Distortion free vision
- Antiscratch

KAIMAN

ACTIVE

>>> The Kaiman is the perfect go-to goggle for swimmers who take their training sessions and fitness seriously. Thanks to the ultra-soft silicone Softeril skirt, split strap, and easy-to-use buckle for quick fit adjustments, the KAIMAN has proved time and time again that it is, without a doubt, one of the most comfortable and watertight swim goggles on the market.



EZ ADJUST BUCKLES WITH SILICONE SPLIT STRAP
For quick and easy fit adjustments

SOFTERIL
ULTRA SOFT SKIRT
For maximum comfort

PARTIALLY SUNNY



>>> **EP318000LD** <<<
SMOKE
KAIMANA1 TRP TRP LD
V.L.T : 27%



>>> **EP3180098LD** <<<
SMOKE
KAIMANA1 CLEAR PETROL LD
V.L.T : 27%



>>> **EP3180101LD** <<<
SMOKE
KAIMANA1 BLK BLK LD
V.L.T : 27%

INDOOR CLOUDY



>>> **EP3180000LB** <<<
BLUE TINTED
KAIMANA1 TRP TRP LB
V.L.T : 58%



>>> **EP3180098LC** <<<
CLEAR
KAIMANA1 CLEAR PETROL LC
V.L.T : 92%



>>> **EP3180101LC** <<<
CLEAR
KAIMANA1 BLK BLK LC
V.L.T : 92%



>>> **EP3180000LC** <<<
CLEAR
KAIMANA1 TRP TRP LC
V.L.T : 92%



>>> **EP3184100LC** <<<
CLEAR
KAIMANA1 LBL TRP LC
V.L.T : 92%



- >>> **OTHER FEATURES:**
- Antiscratch
 - Softeril contains TPR

KAIMAN COMPACT

ACTIVE

>>> The Kaiman Compact is the perfect go-to goggle for swimmers who take their training sessions and fitness seriously. Thanks to the ultra-soft silicone Softeril skirt, split strap, and easy-to-use buckle for quick fit adjustments, the KAIMAN has proved time and time again that it is, without a doubt, one of the most comfortable and watertight swim goggles on the market.



**SOFTERIL
ULTRA SOFT SKIRT**
For maximum comfort



COMPACT FIT
Made for smaller faces



EZ ADJUST BUCKLES WITH SILICONE SPLIT STRAP
For quick and easy fit adjustments



LATEX FREE

>>> **OTHER FEATURES:**

- Antiscratch
- Softeril contains TPR

PARTIALLY SUNNY



>>> **EP3230101LD** <<<
SMOKE
KAIMAN SMALLA1 BLK BLK LD
V.L.T : 27%



>>> **EP3230000LD** <<<
SMOKE
KAIMAN SMALLA1 TRP TRP LD
V.L.T : 27%

INDOOR CLOUDY



>>> **EP3230000LB** <<<
BLUE TINTED
KAIMAN SMALLA1 TRP TRP LB
V.L.T : 58%



>>> **EP3230101LC** <<<
CLEAR
KAIMAN SMALLA1 BLK BLK LC
V.L.T : 92%



>>> **EP32300043LC** <<<
CLEAR
KAIMAN SMALLA1 TRP TBL LC
V.L.T : 92%

MAKO

ACTIVE

>>> Bringing Aquasphere's comfort and quality to the everyday swimmer, the Mako utilizes a one-piece frame construction and easy-to-adjust side buckles. The Mako is a perfect goggle for the casual swimmer who's looking for a comfortable solution.

**SOFTERIL
ULTRA SOFT
SKIRT**
*Allows maximum comfort &
leak resistant seal*



**EZ ADJUST BUCKLES WITH
SILICONE SPLIT STRAP**
For quick and easy fit adjustments



>>> **OTHER FEATURES:**

- Flat lens
- Antiscratch
- Softeril contains TPR

**INDOOR
CLOUDY**



>>> **EP3240040LB** <<<

BLUE TINTED

MAKO2.A1 TRP BLUE LB

V.L.T : 58%



>>> **EP3240040LC** <<<

CLEAR

MAKO2.A1 TRP BLUE LC

V.L.T : 92%

NEW



>>> **EP3240101LD** <<<

SMOKE

MAKO2.A1 BLACK LD

V.L.T : 27%

NEW



>>> **EP3240101LC** <<<

CLEAR

MAKO2.A1 BLACK LC

V.L.T : 92%

VISTA JR

JUNIOR

>>> Designed for aged 6+. The Vista Jr fits like a mask by sealing around the outside of the eyes, eliminating any pressure on the eye sockets. This creates a more Comfortable, Leak Free Fit so your kids can wear them all day without worrying about getting water in their eyes.

Incorporating our curved lens technology to offer a wide field of vision to give a very open, unrestricted feel that will boost your kids confidence in the water. Our Quick-Fit Buckle System makes adjusting the head strap easier than ever!



6+

FIT
Ages 6+



QUICK FIT BUCKLE
Provides perfect fit & easy adjustments

SOFTERIL

ULTRA SOFT SKIRT
Allows maximum comfort & leak resistant seal

INDOOR CLOUDY



>>> **MS5630209LB** <<<

BLUE TINTED

VISTA JRA1 PK WHT LB
V.L.T : 58%



>>> **MS5630031LB** <<<

BLUE TINTED

VISTA JRA1 TRP BR GREEN LB
V.L.T : 58%



>>> **MS5634008LC** <<<

CLEAR

VISTA JRA1 BLU ORG LC
V.L.T : 92%



>>> **MS5634007LC** <<<

CLEAR

VISTA JUNIORA1 BLU YLW LC
V.L.T : 92%



>>> **MS5634302LC** <<<

CLEAR

VISTA JUNIORA1 TRQ PNK LC
L.T : 92%



LATEX FREE

>>> **OTHER FEATURES:**

- Antiscratch
- Softeril contains TPR

SEAL KID 2

JUNIOR

>>> The evolution of the original swim mask for children, the Seal Kid 2 delivers a leak-free fit for children as young as 3 years old. The Seal Kid 2 utilizes Aquasphere curved lenses technology for a wide field of vision, making children more confident in the water. The easy-adjust side buckles are simple for kids or parents to adjust even while wearing!



SOFTERIL
ULTRA SOFT SKIRT
Allows maximum comfort & leak resistant seal

3y+
FIT
Ages 3+



- >>> **OTHER FEATURES:**
- Antiscratch
 - Softeril contains TPR

☁️ 🏠 **INDOOR CLOUDY**



>>> **MS5610000LB** <<<
BLUE TINTED
SEAL KID2 '18.A1 TRP LIME LB
V.L.T : 58%



>>> **MS5614002LC** <<<
CLEAR
SEAL KID2 '18.A1 BLUE PINK LC
V.L.T : 92%



>>> **MS5614343LC** <<<
CLEAR
SEAL KID2 '18.A1 AQUA LIME LC
V.L.T : 92%



>>> **MS5614340LC** <<<
CLEAR
SEAL KID2 '18.A1 TURQ BLUE LC
V.L.T : 92%



>>> **MS5610505LC** <<<
CLEAR
SEAL KID2 '18.A1 PRP LIME LC
V.L.T : 92%



>>> **MS5613131LC** <<<
CLEAR
SEAL KID2 '18.A1 BGN BLUE LC
LV.T : 92%

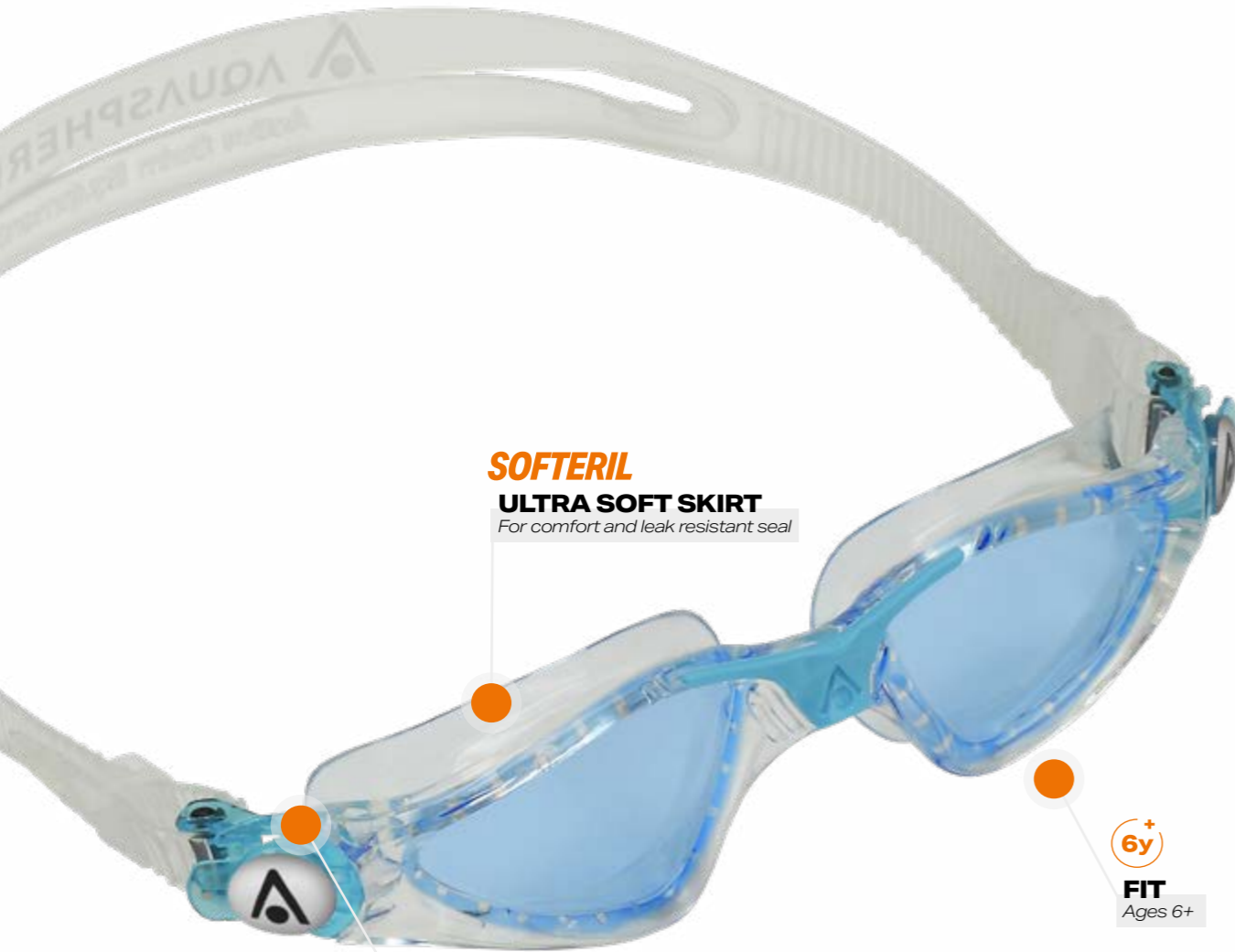


>>> **MS5610202LC** <<<
CLEAR
SEAL KID2 '18.A1 PK WHITE LC
V.L.T : 92%

KAYENNE JR

JUNIOR

>>> Designed for ages 6-15. The Kayenne Jr has unique oversized lens design and softeril skirt to combine for a comfortable leak free fit. Quick fit buckles make for easy one touch strap adjustments, even while wearing them!



SOFTERIL
ULTRA SOFT SKIRT
For comfort and leak resistant seal

EZ ADJUST BUCKLES WITH SILICONE SPLIT STRAP
For quick and easy fit adjustments

6+
FIT
Ages 6+

INDOOR CLOUDY



>>> **EP3190043LB** <<<
BLUE TINTED
KAYENNE JRA1 TRP AQUA LB
V.L.T : 58%



>>> **EP3194007LC** <<<
CLEAR
KAYENNE JRA1 BLU YELLOW LC
V.L.T : 92%



>>> **EP3194302LC** <<<
CLEAR
KAYENNE JRA1 AQUA PINK LC
V.L.T : 92%



>>> **EP3190131LC** <<<
CLEAR
KAYENNE JRA1 BLK BGN LC
V.L.T : 92%



>>> **EP3190209LC** <<<
CLEAR
KAYENNE JRA1 PK WHT LC
V.L.T : 92%



- >>> **OTHER FEATURES :**
- Torsion-free inserts
 - Antiscratch
 - Softeril contains TPR

MOBY KID

JUNIOR

>>> Bringing Aquasphere comfort and quality to the beginning swimmer, the Moby Kid utilizes a one-piece frame construction, Aquasphere proprietary Softeril material, and easy to adjust side buckles.



INDOOR CLOUDY



>>> **EP3280073LB** <<<
BLUE TINTED
MOBY KID.A1 TRP LIME LB
V.L.T : 58%



>>> **EP3280209LC** <<<
CLEAR
MOBY KID.A1 PINK WHITE LC
V.L.T : 92%



>>> **EP3284008LC** <<<
CLEAR
MOBY KID.A1 BLUE ORANGE LC
V.L.T : 92%



- >>> **OTHER FEATURES:**
- Antiscratch
 - Softeril contains TPR

ADVANCED TECHNOLOGY

Innovative mix of performance and long-lasting comfort, we aim to provide triathletes and open water swimmers the best training and race wetsuits.



WETSUITS
& TECHSUITS

MATERIALS

YAMAMOTO

Durable, lightweight, high-performance Japanese neoprene feels like a second skin thanks to maximum elasticity and thermal insulation.



YAMAMOTO 38

A more compressive version of the Japanese Yamamoto neoprene contours to your body in areas with smaller motion ranges.



YAMAMOTO 39

The high-elasticity version of Yamamoto neoprene offers a greater range of motion to reduce muscle fatigue while swimming.



YAMAMOTO 40

Developed by improving the flexibility of #39 adopted by triathletes requiring an increased range of motion.



YAMAMOTO 45

Flagship neoprene famed for its ultra-flexibility. The premier choice for experiencing and becoming one with the open sea.



BIO STRETCH ZONES

2-way stretch for an unlimited and uncompromised range of motion in the water.



SUPER COMPOSITE SKIN

Hydrophobic coating to reduce surface drag for more speed in the water and during transitions.



	38 "STANDARD" <i>Standard rubber</i>	39 "SUPER LIGHT" <i>The lightest rubber</i>	40 "SUPER STETCH" <i>Light, warm and flexible</i>	45 "PRO" <i>Most flexible rubber</i>
STRENGTH	■ ■ ■ ■ □ □	■ ■ ■ ■ □ □	■ ■ ■ ■ □ □	■ ■ ■ ■ □ □
FLEX	■ ■ ■ ■ □ □	■ ■ ■ ■ □ □	■ ■ ■ ■ ■ □	■ ■ ■ ■ ■ ■
BUOYANCY	■ ■ ■ ■ ■ □	■ ■ ■ ■ ■ ■	■ ■ ■ ■ ■ □	■ ■ ■ ■ □ □

TECHNOLOGIES



COLLAR FUSE

Moulded neoprene collar with pressed edges and double sided SCS coating, to perfectly follow the neck line & reduce water entries while increasing comfort and avoid chafing.



AQUAFLEX 2.0

Dual-sided SCS neoprene collar to limit water entry and avoid neck chafing.



3 SHIELD

3-panel front construction with ultra flexible neoprene stripes on the side allows for effortless movement and breathing, while the thicker neoprene at centre chest keeps your core warm.



AERODOME TECHNOLOGY

Retain air bubbles in air pockets to increase buoyancy, improve body position and boost speed.



QUICK RELEASE PANELS

Increased mid-calf openings make your suit easier to get off for faster transition times.



THERMO GUARD

More warmth for more time spent at the top of your game.

EXOCET.Ultra

PERFORMANCE



COLLAR FUSE
Double sided SCS Neoprene
Engineered for ultimate comfort
and reduced chafing



3 SHIELD
Easy breathing
High Freedom of movement
Reinforced thermal protection

45
XX

YAMAMOTO 45
Maximizes flexibility
Increase range of motion
Reduced muscle fatigue



REFLECTIVE PRINT
Large Reflective Print
High Visibility in Open Sea
for Safety



INTEGRATED BACKLOOP
Hassle Free Buoy Attachment Space
Swim safely without discomfort



>>> Experience aquatic freedom with our EXOCET Ultra Open Water Wetsuit, meticulously crafted in collaboration with professional swimmers. Unleash unparalleled flexibility with Yamamoto 45 neoprene, paired with a front 3SHIELD panel for wide chest and arm movement. Say goodbye to the typical wetsuit feel and welcome natural buoyancy, all the while staying visible in open waters with reflective back prints and vibrant yellow details. Prioritize comfort with a fused finish collar, double-sided with SCS coated neoprene, and a lower neck opening to limit chafing and increase comfort during head movements. Conquer the wild with a wetsuit that feels like a second skin.



- 4MM
- 3MM
- 2MM #45
- 2MM #39
- 1,5MM #39



NEW



MEN

>>> **WS0230173** <<<
BLACK & LIME
XS / S / M / ML / L / XL / 2XL

NEW



WOMEN

>>> **WS0240173** <<<
BLACK & LIME
XS / S / M / L / XL

OTHER FEATURES:

- SCS Coating: reduced drag and water absorption, greater water glide & increased speed
- Thermo Guard: neoprene panels on chest, shoulders and legs, maintains body heat
- Regular back zipper with woven leash

EXOCET GLOVES

ACTIVE

NEW



>>> GL1890171 <<<

BLACK & LIME
S/M/L/XL



>>> Level up with our Open Water Swim Gloves. Preformed fingers offer a natural hand feel, while the 2.5mm thickness ensures optimal body temperature without compromising flexibility. Enhanced palm grip boosts durability and prevents slips. Elevate your outdoor swims with these performance-driven gloves.



FEATURES:

- Preformed shape – comfort and swim ready
- Antislip grip in palm for shore abrasion
- Neoprene 2.5mm – retains heat

EXOCET SOCKS

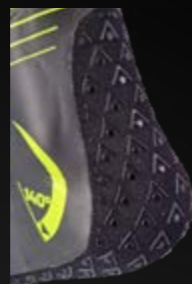
ACTIVE

NEW



>>> BS2200171 <<<

BLACK & LIME
S/M/L/XL



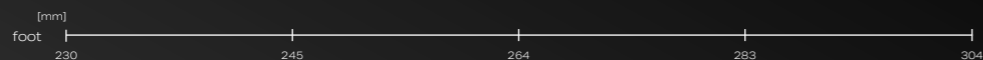
>>> Meet the perfect addition to your next open water session. Crafted in a 2.5mm neoprene, these Open Water Swim Socks feature a 140° angled shape for natural foot positioning. Glide effortlessly with the open cell neoprene and revel in comfort with the jersey lining. The 3D grip pattern on the outer sole ensures durability and prevents slipping on wet rocks, making these socks your essential companion for a warmer, safer swim session.



FEATURES:

- 140° ankle angle - swim ready
- Anti-slip sole - for shore abrasion and durability
- Neoprene 2,5mm - retains heat
- Glide skin outside - ideal for swimming

	S			M			L			XL		
EUR	36	37	38	39	40	41	42	43	44	45	46	47
US	4	5	5.5	6	7	8	9	9.5	10	11	11.5	12
UK	3	4	5	6	6.5	7	8	9	9.5	10.5	11	12



RACER.Boost

PERFORMANCE



**2.0
AQUAFLEX**
SCS neoprene double sided collar
Maximizes comfort
Prevents chafing

**40
XX**
BIO STRETCH ZONES & YAMAMOTO 40
Maximizes flexibility
Increase range of motion
Reduced fatigue

AERODOME TECHNOLOGY
Maximizes buoyancy
Improved Body position

QUICK RELEASE PANEL
Increased mid-calf opening
Easy off
Improved transition time

>>> Feel the difference and save energy during your race with our best in class triathlon wetsuit, the RACER.Boost. Strategically placed Aerodome Technology provides extra boost of buoyancy for better horizontal positioning in the water and the latest generation of Yamamoto 40 neoprene improves flexibility in the shoulders and back to reduce muscle fatigue. Experience ultimate comfort with the new Aquaflex 2.0 anti-chafe collar, faster transitions with Quick Release Panels and reduced water drag with our SCS Coating.



- YAMAMOTO**
- 4MM - #39
 - 3.5MM - #39
 - 3.5MM - AERODOME
 - 2MM - #40
 - 1.5MM - #40
 - LYCRA FABRIC



OTHER FEATURES:

- SCS Coating: reduced drag and water absorption, greater water glide & increased speed
- Thermo Guard: neoprene panels on chest, shoulders and legs, maintains body heat
- Reversed back zipper: top to bottom for easy removal

NEW



MEN

>>> **SU0100173** <<<
BLACK & LIME
XS / S / M / ML / L / XL / 2XL

NEW



WOMEN

>>> **SU0110173** <<<
BLACK & LIME
XS / S / M / L / XL

RACER.Flex

PERFORMANCE



2.0 AQUAFLEX
SCS neoprene
double sided collar
Maximizes comfort
Prevents chaffing

40 XX
BIO STRETCH ZONES & YAMAMOTO 40
Maximizes flexibility
Increase range of motion
Reduced fatigue

SCS COATING
SCS COATING
Reduced drag and
water absorption for a
greater water glide

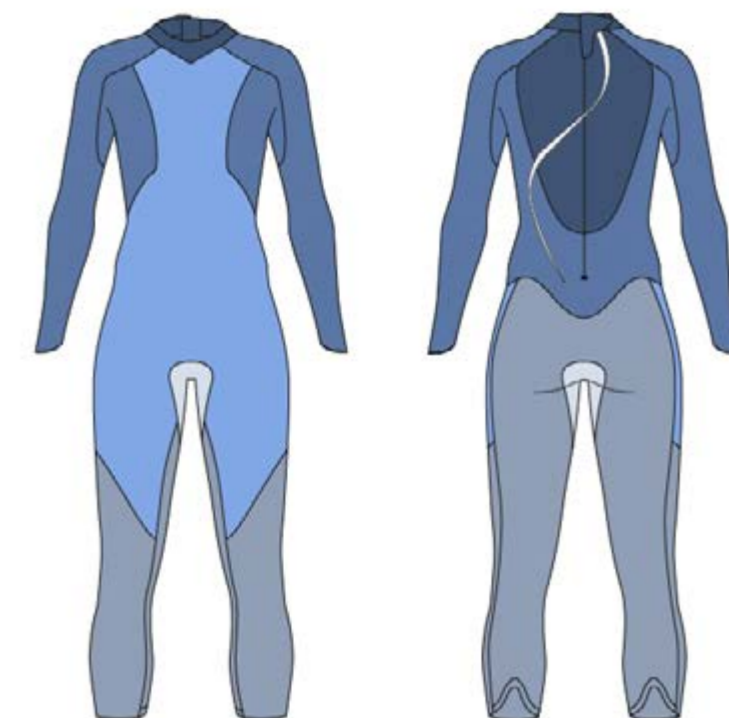
QUICK RELEASE PANEL
Increased mid-calf opening
Easy off
Improved transition time

>>> Set off into your triathlon race with confidence in the RACER.Flex thanks to Bio Stretch Zones and Yamamoto 40 limestone neoprene in strategic area for maximum flexibility and reduced muscle fatigue. Using Thermo Guard technology to maintain body heat and a new Aquaflex 2.0 double-sided collar to prevent chafing means you can focus on your stroke in extreme comfort. The different panels thicknesses allow for ideal buoyancy and greater water glide. The RACER.Flex is the optimal wetsuit for any triathlete.



YAMAMOTO

5MM	#39
4MM	#39
3MM	#39
2MM	#39
1,5MM	#40



OTHER FEATURES:

- Thermo Guard: thick neoprene panels on chest, shoulders and legs to maintains body heat
- Regular back zipper: easy removal

NEW

MEN

>>> **SU0120131** <<<<
BLACK & GREEN
XS / S / M / ML / L / XL / 2XL

NEW

WOMEN

>>> **SU0130131** <<<<
BLACK & GREEN
XS / S / M / L / XL

RACER.Active

ACTIVE



**2.0
AQUAFLEX**
SCS neoprene
double sided collar
Maximizes comfort
Prevents chaffing

BIO STRETCH ZONES
Maximizes flexibility
Increase range of motion
Reduced fatigue

**38
XX**
YAMAMOTO 38
4mm neoprene panels on chest
and thighs
Increased buoyancy & reduced
drag

>>> The RACER.Active is designed to fit you better thanks to 2mm Bio Stretch Zones in critical areas for freedom of movement and more compressive Yamamoto 38 neoprene for extra support where you need it most. Our new and improved Aquaflex 2.0 double-sided collar is our comfiest anti-chafe neck seal yet, while the Thermo Guard panels help you maintain your body temperature so you can stay in the water for longer. Training for your next triathlon has never felt better.



YAMAMOTO

4MM - #38
3,5MM - #38
3MM - #38
2MM - #38
2MM - #39
1,5MM - #38



OTHER FEATURES:

- SCS Coating: reduced drag & water absorption, greater water glide
- Thermo Guard: thick neoprene panels on chest, shoulders and legs to maintains body heat
- Regular back zipper: easy removal
- Quick release panels: horse shoe opening, easy off

NEW



MEN

>>> **SU0220140** <<<
BLACK & BLUE
XS / S / M / ML / L / XL / 2XL

NEW



WOMEN

>>> **SU0230140** <<<
BLACK & BLUE
XS / S / M / L / XL

AQUASKIN FULL SUIT

ACTIVE



HYBRID CONSTRUCTION
Jersey insert
Increased range of motion

SCS COATING
SCS Neoprene 1,5mm
Maximum flexibility & reduced drag and water absorption

>>> Extend the length of your stroke and increase your speed in the water with 1.5mm SCS Neoprene, designed to provide maximum flexibility where you need it most and reduced drag and water absorption. Experience lighter, warmer or more comfortable swim sessions with the AQUASKIN Full Suit, the perfect match for any open water swimmer.



OTHER FEATURES:

- Glued & Blindstitched assembling: watertight seal
- Pull back zipper: easy on & off



1,5MM - #38
1,5MM
1MM

NEW



>>> **SU8400140** <<<
BLACK & BLUE
S / M / L / XL / 2XL

NEW



>>> **SU8410140** <<<
BLACK & BLUE
XS / S / M / L / XL

WOMEN

AQUASKIN SHORTY

ACTIVE



HYBRID CONSTRUCTION
Jersey insert
Increased range of motion

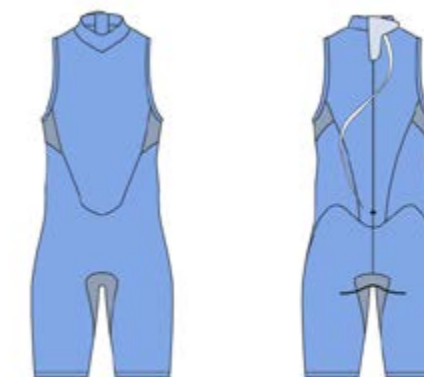
SCS COATING
SCS Neoprene 1,5mm
Maximum flexibility & reduced drag and water absorption

>>> Maximise your time in water and boost your training sessions with 1.5mm SCS Neoprene for maximum flexibility. Thanks to water-tight glued and blind stitched seams, the easy on-and-off back zip AQUASKIN Shorty is the perfect match for any open water swimmer



OTHER FEATURES :

- Glued & Blindstitched assembling: watertight seal
- Pull back zipper: easy on & off



1,5MM - #38
1MM
1MM - NYLON

NEW



>>> **SU8520140** <<<
BLACK & BLUE
S / M / L / XL / 2XL

NEW



>>> **SU8510140** <<<
BLACK & BLUE
XS / S / M / L / XL

WOMEN

AQUASKIN HOOD

ACTIVE



S-C-S COATING
Neoprene 2mm
Warmth & Comfort



OTHER FEATURES:
• Glued and blindstitched assembling

NEW



SU8230140

BLACK & BLUE

S/M/L/XL

RACER. Speedsuit

PERFORMANCE

>>> Speed through the warm water like never before using a combination of hydrophobic fabric that decreases drag and reduces water absorption, jacquard fabric for more flexibility, and woven materials for compressive support when you need it most. Designed for the elite triathlete, the exceptionally hydrodynamic RACER. Speedsuit is engineered with Thermo-Bonded Seams to prevent chafing and an Auto-Lock Zipper with an easy release for super-fast, fuss-free transitions.



JACQUARD FABRIC
Increased flexibility



THERMO BOUNDED SEAMS
Prevents chafing & maximize comfort



WOVEN FABRIC
Increased compression



HYDROPHOBIC FABRICS
Muscle vibrating control, reduced water absorption & drag



● **JACQUARD fabric**
● **Woven fabric**

OTHER FEATURES:
• Auto Lock Zipper
• Back staydown puller: quick transition & easy release



MEN

CM0130101

BLACK

XS/S/M/L/XL/2XL



WOMEN

CW0180101

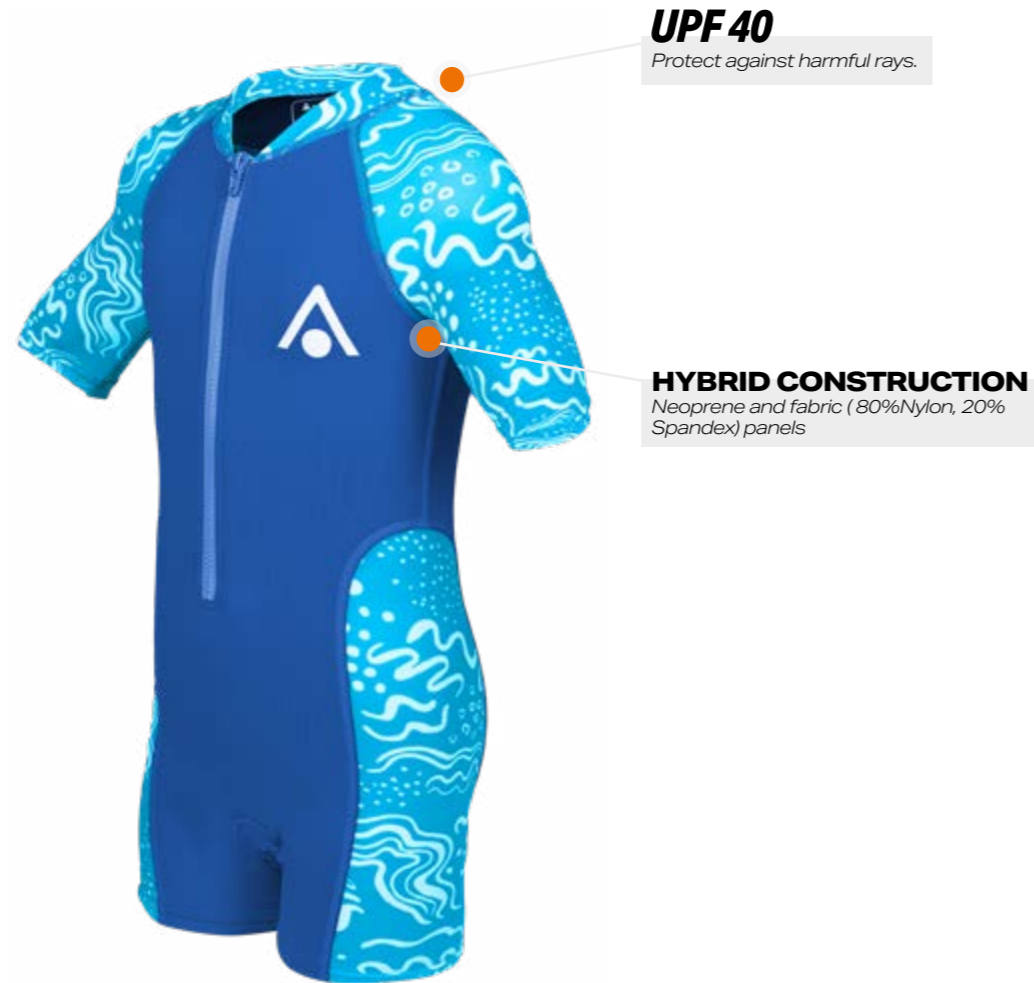
BLACK

XS/S/M/L/XL

STINGRAY 2.0

JUNIOR

>>> The Stingray 2.0 core warmer keeps kids warm and allows the freedom of movement they need while playing in and out of the water.



UPF 40

Protect against harmful rays.

HYBRID CONSTRUCTION

Neoprene and fabric (80%Nylon, 20% Spandex) panels

NEW



>>> **SJ4404041** <<<

BLUE LIGHT BLUE

2/4/6/8/10/12

NEW



>>> **SJ4401602** <<<

RASPBERRY PINK

2/4/6/8/10/12

NEW



>>> **SJ4400307** <<<

GREEN YELLOW

2/4/6/8/10/12

SIZING CHART

MEN

	HEIGHT (INCH/CM)	WEIGHT (LB/KG)
XS	59 - 65	121 - 143
	150 - 165	55 - 63
S	65 - 69	139 - 161
	165 - 175	63 - 73
M	68 - 73	155 - 175
	173 - 185	70 - 80
ML	70 - 75	165 - 198
	178 - 190	75 - 90
L	73 - 76	187 - 214
	185 - 195	85 - 97
XL	75 - 80	207 - 242
	190 - 205	94 - 110
2XL	78 +	242 +
	200+	110+

WOMEN

	HEIGHT (INCH/CM)	WEIGHT (LB/KG)
XS	57 - 61	100 - 115
	145 - 155	45 - 52
S	61 - 65	110 - 125
	155 - 165	50 - 57
M	65 - 69	120 - 145
	165 - 175	54 - 64
L	68 - 73	140 - 165
	173 - 185	64 - 75
XL	73+	165+
	185+	75+

KIDS

	HEIGHT (INCH/CM)	WEIGHT (LB/KG)	CHEST (LB/KG)	
2	33 - 40	24 - 33	20 - 22	±1
	83 - 100	11 - 15	52 - 56	±2.5
4	40 - 44	35 - 45	22 - 24	±1
	100 - 113	15 - 19	56 - 60	±2.5
6	45 - 50	42 - 55	24 - 25	±1
	113 - 126	19 - 25	60 - 64	±2.5
8	50 - 54	55 - 66	25 - 28	±1
	126 - 137	25 - 30	64 - 70	±2.5
10	54 - 58	66 - 84	28 - 31	±1
	137 - 148	30 - 38	70 - 78	±2.5
12	58 - 63	84 - 105	31 - 33	±1
	148 - 160	38 - 48	78 - 84	±2.5

NOTE: THIS CHART IS INTENDED TO BE USED AS A GENERAL SIZING GUIDELINE.

INSIGHTFUL & SUSTAINABLE

Our swimwear chlorine-resistant and sustainable fabrics mixed to the right amount of stretch offers durability, functionality and comfort.

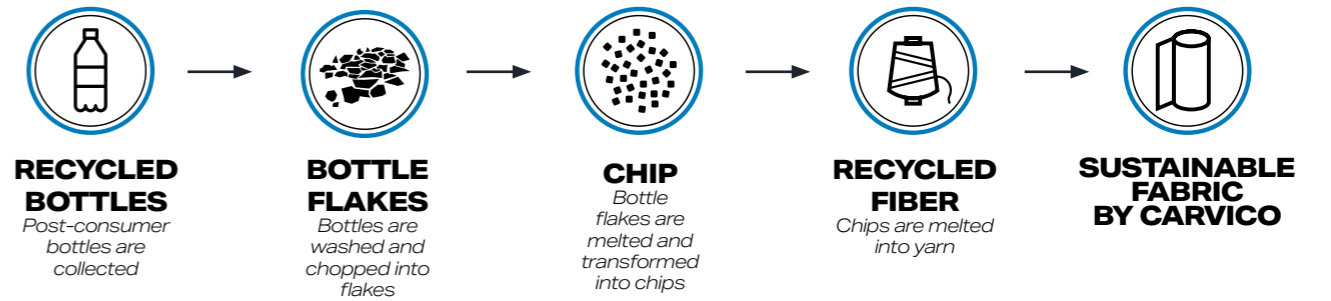


SWIMWEAR



SUSTAINABILITY

All our Essentials training suits are made from 2 to 5 plastic bottles.



SUSTAINABLE FABRICS

Sydney Eco and Xplay sustainable fabrics have been designed to last through any intense training.

- CHLORINE PROOF**
- FOUR-WAY STRETCH**
- RECYCLED YARN**
- PILLING RESISTANT**
- BREATHABLE**

51%
Recycled Polyester

+ 49%
P.B.T

SYDNEY ECO

78%
Recycled Polyester from post-consumer recycled PET bottles

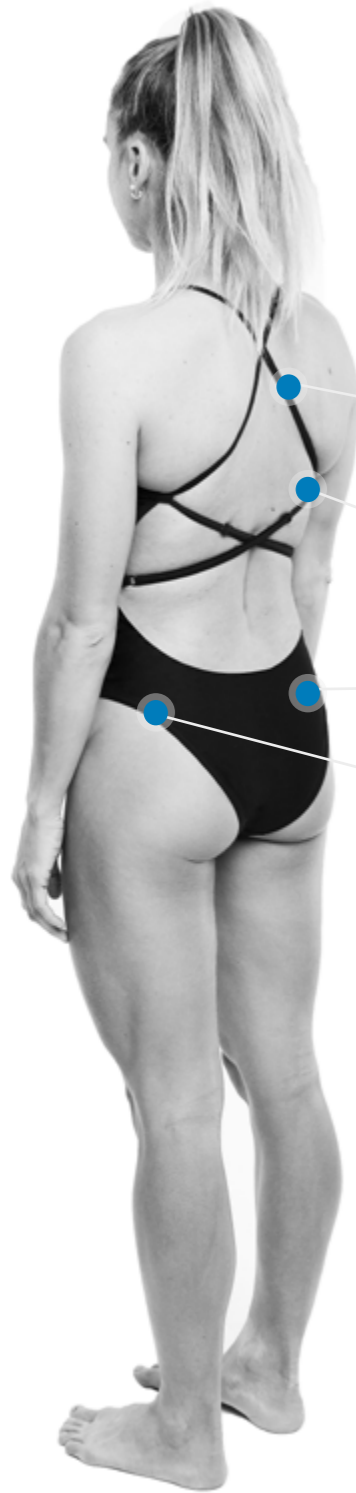
+ 22%
XLance® elastomer

XPLAY

SWIMWEAR FABRICS

DIAMOND BACK **ADJ**

ESSENTIALS



DIAMOND BACK
Trendy sport design

SILICONE ADJUSTABLE STRAPS
With sliders, ensure a perfect fit
Durable for long lasting comfort

100%
Chlorine resistant

HIGH-LEG CUT
Greater range of motion

>>> The Essentials Diamond Back Adjustable has been designed to last through any intense training. Crafted with XPLAY sustainable fabric, it assures great support and comfort during swim training, and features adjustable straps for a greater fit. Co-designed with international athletes. This training suit is made of 4 plastic bottles!*



CHLORINE PROOF



PILLING RESISTANT



FOUR-WAY STRETCH



SHAPE RETENTION



RECYCLED YARN



BREATHABLE



>>> **SW4730107** <<<

BLACK YELLOW

34/36/38/40/42/44/46

>>> The Essential Classic Back has been designed to assure long lasting comfort during swim training. Crafted with X-Play sustainable fabric, it allows high flexible fit guaranteeing greater range of motion. This training suit is made of 4 plastic bottles!*



CHLORINE PROOF



PILLING RESISTANT



FOUR-WAY STRETCH



SHAPE RETENTION



RECYCLED YARN



BREATHABLE



>>> **SW4680107** <<<

BLACK YELLOW

36/38/40/42/44/46/48

NEW



>>> **SW4734607** <<<

FROZEN BLUE YELLOW

34/36/38/40/42/44/46

NEW



>>> **SW4730446** <<<

NAVY FROZEN BLUE

34/36/38/40/42/44/46

NEW



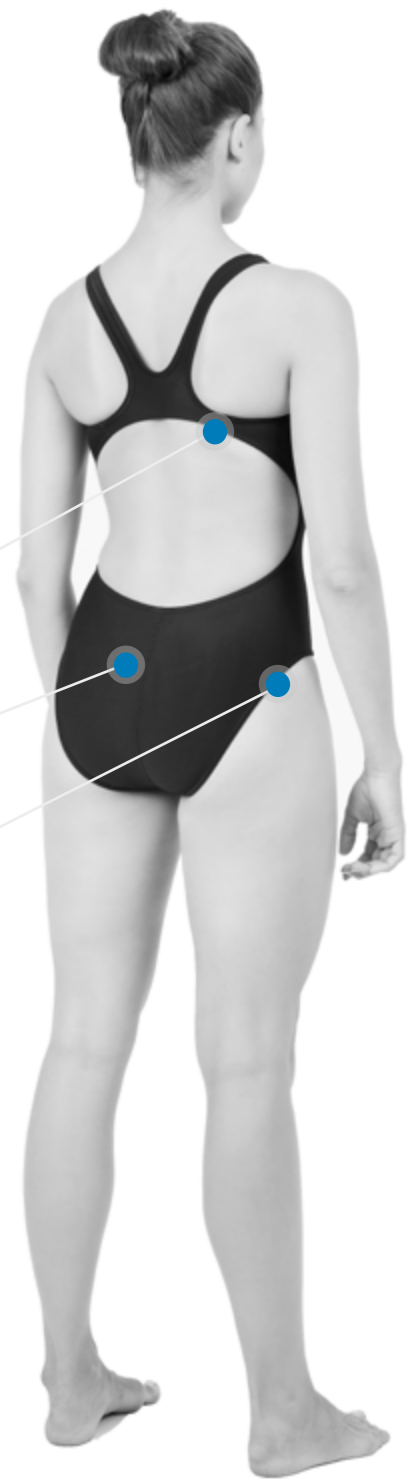
>>> **SW4680446** <<<

NAVY FROZEN BLUE

36/38/40/42/44/46/48

CLASSIC **BACK**

ESSENTIALS



CLASSIC BACK
Greater coverage & better stability

100%
Chlorine resistant

MIDDLE-LEG CUT
Greater coverage

OTHER FEATURES:

- Durable Fabric Elasticity
- Double lining
- X-Play sustainable fabric: 78% Recycled Polyester from post-consumer recycled PET bottle + 22% Elastolefin

* Based on 1L bottle and size FR 36

OTHER FEATURES:

- Durable Fabric Elasticity
- Sustainable lining material
- X-Play sustainable fabric: 78% Recycled Polyester from post-consumer recycled PET bottle + 22% Elastolefin

* Based on 1L bottle and size FR 36

BRIEF 8CM

ESSENTIALS



>>> The Essentials Brief 8cm has been designed to last through any intense training. Crafted with Sydney Eco sustainable fabric, it allows a compressive and breathable fit while guaranteeing long lasting comfort.

This training suit is made of 2 plastic bottles!*



100%
Chlorine resistant

FULLY LINED
Long-lasting comfort



>>> **SM4740107** <<<
BLACK YELLOW
70/75/80/85/90/95



>>> **SM4770107** <<<
BLACK YELLOW
70/75/80/85/90/95



>>> **SM4744607** <<<
FROZEN BLUE YELLOW
70/75/80/85/90/95



>>> **SM4740407** <<<
NAVY YELLOW
70/75/80/85/90/95



>>> **SM4774607** <<<
FROZEN BLUE YELLOW
70/75/80/85/90/95



>>> **SM4770407** <<<
NAVY YELLOW
70/75/80/85/90/95

OTHER FEATURES:

- Durable Fabric Elasticity
- Adjustable inner draw cords
- Sydney Eco composition: 51% Recycled Polyester from post-consumer recycled PET bottles + 49% polyester from PBT

* Based on 1L bottle and size 85

BRIEF 14CM

ESSENTIALS



>>> The Essentials Brief 14cm has been designed to last through any intense training. Crafted with Sydney Eco sustainable fabric, it allows a compressive and breathable fit while guaranteeing long lasting comfort.

This training suit is made of 2 plastic bottles!*



100%
Chlorine resistant

FULLY LINED
Long-lasting comfort

OTHER FEATURES:

- Durable Fabric Elasticity
- Adjustable inner draw cords
- Sydney Eco composition: 51% Recycled Polyester from post-consumer recycled PET bottles + 49% polyester from PBT

* Based on 1L bottle and size 85

BOXER

ESSENTIALS

>>> The Essential Boxer has been designed to guarantee long lasting comfort during swim training



CHLORINE PROOF



FOUR-WAY STRETCH



RECYCLED YARN



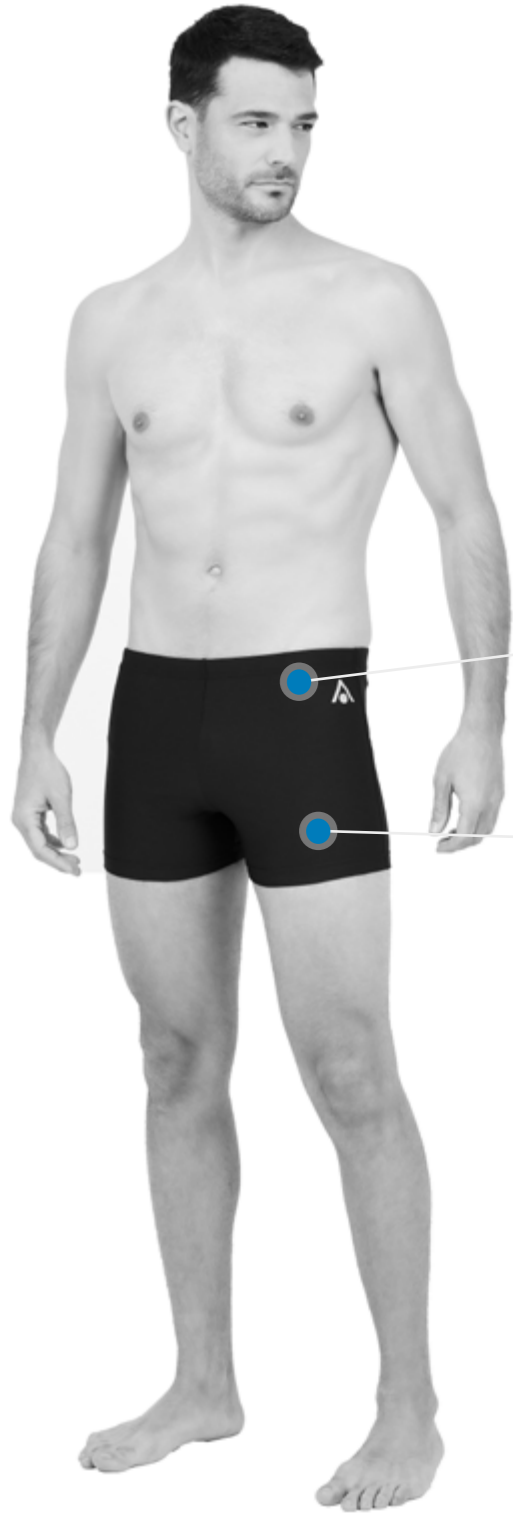
PILLING RESISTANT



SHAPE RETENTION



BREATHABLE



100%
Chlorine resistant

FULLY LINED
Long-lasting comfort



>>> **SM4750107** <<<

BLACK YELLOW

70/75/80/85/90/95

NEW



>>> **SM4750407** <<<

NAVY YELLOW

70/75/80/85/90/95

OTHER FEATURES:

- Durable Fabric Elasticity
- Adjustable inner draw cords
- Xplay composition:
78% Recycled Polyester from post-consumer recycled PET bottles +22% Elastolefin

*Based on 1L bottle and size FR 36

SIZING CHART

MEN

SWIMWEAR

SIZE	2XS	XS	S	M	L	XL	
FR	70	75	80	85	90	95	
UK / US	28	30	32	34	36	38	
DE / A / CH	2	3	4	5	6	7	
IT	42	44	46	48	50	52	
HEIGHT	cm	141-152	153-165	166-172	173-179	180-183	184-186
	inches	55.5 - 59.8	60.2 - 64.9	65.3 - 67.7	68.1 - 70.5	70.9 - 72	72.4 - 73.2
WAIST	cm	73	75	80	85	90	95
	inches	28.5	29.5	31.5	33.5	35.5	37.5
WAIST	cm	88	90	95	100	105	110
	inches	34.5	35.5	37.5	39.5	41.5	43.5

WOMEN

SWIMWEAR

FR	34	36	38	40	42	44	46	48	
UK / US	28	30	32	34	36	38	40	42	
DE / A / CH	32	34	36	38	40	42	44	46	
IT	38	40	42	44	46	48	50	52	
HEIGHT	cm	168	170	172	174	176	178	180	182
	inches	66	66.9	67.7	68.5	69.3	70	70.8	71.6
CHEST	cm	81 - 84	85 - 90	91 - 95	96 - 100	101 - 105	106 - 110	111 - 115	116-120
	inches	32 - 33	33.5 - 35.5	36 - 37.5	38 - 39.5	40 - 41.5	41.5 - 43.5	43.5 - 45.5	45.5 - 47.2
WAIST	cm	62 - 65	66 - 70	71 - 75	76 - 80	81 - 85	86 - 90	91 - 95	96-100
	inches	24.5 - 25.5	26 - 27.5	28 - 29.5	30 - 31.5	32 - 33.5	34 - 35.5	36 - 37.5	37.8 - 39.4
HIPS	cm	88 - 90	91 - 95	96 - 100	101 - 105	106 - 110	111 - 115	116 - 120	121-125
	inches	34.5 - 35.5	36 - 37.5	37.5 - 39.5	39.5 - 41.5	41.5 - 43.5	43.5 - 45.5	45.5 - 47	47.6 - 49.2

NOTE: THIS CHART IS INTENDED TO BE USED AS A GENERAL SIZING GUIDELINE.

Our commitment to innovation leads us to design tailored training equipment and accessories dedicated to developing specific workouts and muscle groups to achieve an individual's personal training requirements.

TRAINING GEAR & ACCESSORIES



TAKE CARE OF YOUR SWIM GOGGLES

SEA-CLR ECO FRIENDLY ANTI-FOG



>>> SA2130040 <<<
SEA-CLR SPRAY

FEATURES:

- Clean and restore plastic lenses for swim goggles
- Crystal vision and anti-fog guard
- Environmentally safe
- Physiologically safe
- Anti-fog
- Scratch-resistant
- No eye irritation
- Reef safe formula
- Made in Italy
- 35mL

SWIM MASK AND GOGGLE CASE EYEWEAR STORAGE CASE



>>> ST1750141 <<<
SWIM MASK CASE
110 X 230 MM



>>> ST1760106 <<<
SWIM GOGGLE CASE
80 X 190 MM

FEATURES:

- Fits and protects all your small accessories
- Two inner pocket for valuables (anti-fog, nose clip, ear plugs..)
- 3D mesh for ventilation against moisture
- EVA thermoformed case to protect and resist against impacts

POOL BACKPACK

EQUIPMENT BAG 30L

>>> Stay prepared for your next swim session or competition with the Pool Backpack. Featuring a stand-alone structure for accessibility, a handy removable dry bag for your wet kit, and plenty of storage compartments to keep everything organized.



- 1 **STAND ALONE STRUCTURE**
Stays upright for easy loading
- 2 **THERMOFORMED BACKPANEL**
Increases air flow for greater ventilation and ultimate comfort
- 3 **DRY BAG 40X30CM**
To store wet gear
- 4 **STORAGE COMPARTMENTS**
*Fits all swimgear and lifestyle items (swimwear, kickboard, snorkel, fins)
1 inside zip pocket
1 elastic mesh pocket*



>>> **BA204017130L** <<<

BLACK & BRIGHT YELLOW

32 X 52 X 18 CM

FEATURES:

- Side pocket: fits 2 bottles (1L each)
- Padded laptop compartment (up to 16 inches): store and protect your device, side zipped access
- Chest belt: perfect fit and comfort
- Clothes clip

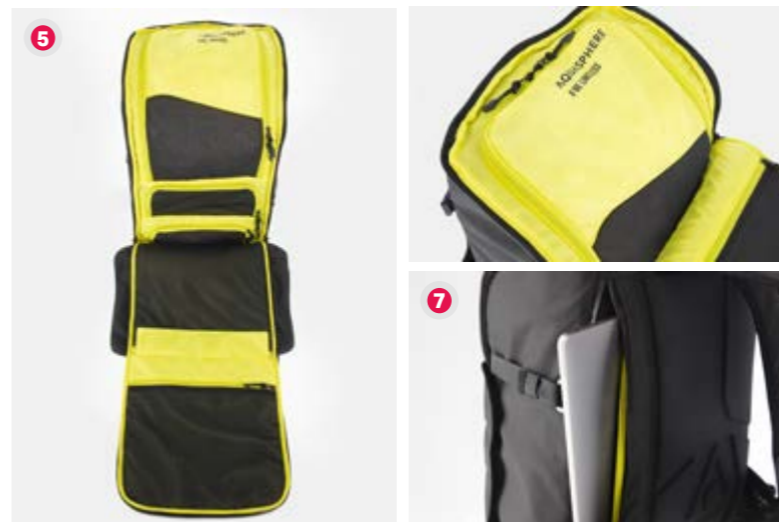
TRANSITION BACKPACK

TRIATHLON BAG 35L

>>> Organisation is key to shaving time off your transitions. The Transition bag provides dedicated spaces for all your race day and travel essentials, including 2 shoe compartments, wet bag for your suit, helmet hanger, Bike-Pump securing strap, accessory pocket for goggles and small items, expandable side pocket fitting 2 water bottles and a handy padded laptop slot. The adjustable chest and waist belt coupled with a breathable Thermoformed back panel ensure an ultra-comfortable fit before, during, and after your triathlon.



- 1 **STAND ALONE STRUCTURE**
Stays upright for easy loading
- 2 **THERMOFORMED BACKPANEL**
Increases air flow for greater ventilation and ultimate comfort
- 3 **DRY BAG 40X30CM**
To store your wet items
- 4 **ADJUSTABLE CHEST AND WAIST BELTS**
For perfect fit and comfort
- 5 **MULTIPLE STORAGE POCKETS**
For greater items organisation
- 6 **BIKE PUMP SECURING STRAPS**
Easily access and store your pump
- 7 **PADDED LAPTOP COMPARTMENT**
Store and protect your device, side zipped access - fits most of 15 inches laptops
- 8 **HELMET HANGER**
Securing hook on the front of the bag



>>> **BA2000171** <<<

BLACK & BRIGHT YELLOW

32 X 52 X 22 CM

FEATURES:

- Includes dry bag: store your wet items
- Chest and waist belts: perfect fit
- Magnetic closure
- Cloth hanger

GEAR MESH BACKPACK

EQUIPMENT BAG 30L



RIGID ROLL TOP OPENING
For easy loading

MESH FABRIC
Allows maximum breathing and quick drying

POLYESTER 210D PU RIPSTOP
Lightweight and resistant to heavy loading



>>> **SA2170401** <<<

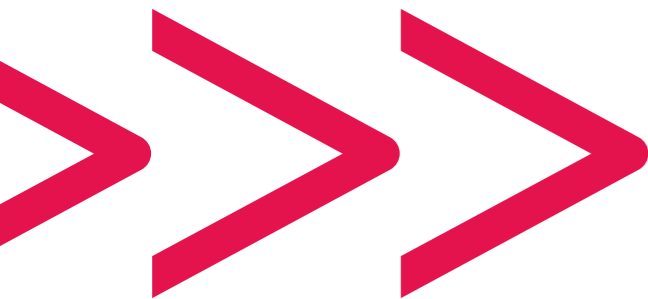
NAVY BLACK

55 X 36 X 15,5 CM

FEATURES:

- Fits all your wet equipment (pull buoy, kickboard, focus snorkel...)
- 2 ways of closing: from the top or on the side to adapt to the volume of your equipment.
- Adjustable shoulder straps: allows to wear as backpack for comfort.
- One outside zip pocket: store your small accessories (eyewear, nose clip, ear plugs...)
- One outside mesh bottle pocket





PULLBUOY

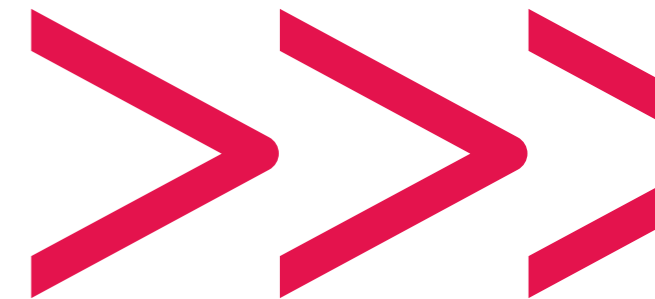
UPPER BODY CONDITIONING



FEATURES:

- Maximizes upper body workout by immobilizing the legs
- Isolates the arm motion to improve stroke form, strengthen and tone
- High density EVA foam with an ergonomic shape
- Durable and will not waterlog

>>> **ST1830471** <<<
NAVY BRIGHT YELLOW



ZIP VX

INCREASE THRUST AND BODY POSITION



>>> **FA3790401** <<<
BLUE & BLACK
S/M/L



>>> **FA3790101** <<<
BLACK
S/M/L

FEATURES:

- Leverages natural kicking motion
- Hole in the blade for increased thrust
- Narrow blade improves kicking mechanics
- Easy-adjust buckles for a custom fit
- Non-slip pads on fin rails provide traction

USA	EU	SIZE
M 4-7 W 5-8	35-40	S
M 7-10 W 8-11	40-44	M
M 10-13 W 11-14	44-48	L

KICKBOARD

LOWER BODY CONDITIONING



FEATURES:

- Maximizes lower body workout by immobilizing the upper body
- High density EVA foam
- Textured to protect against scratches
- Durable and will not waterlog

>>> **ST1820471** <<<
NAVY BRIGHT YELLOW

MICROFIN

LEG WORKOUT



>>> **FA3250101** <<<
BLACK / BLACK
XS/S/M/L/XL



>>> **FA3250701** <<<
YELLOW / BLACK
XS/S/M/L/XL

FEATURES:

- Rigid sole helps prevent cramping
- Closed foot pocket made of durable and ultrasoft TPR polymer
- Anti-slip rubber pads for grip on slippery surfaces
- Improves technique
- Muscles reinforcement

USA	EU	SIZE
4-5	36-37	XS
5-6	38-39	S
6-7	40-41	M
8-9	42-43	L
9 ^{1/2} -10 ^{1/2}	44-45	XL

SWIMGLOVES

LOW IMPACT RESISTANCE

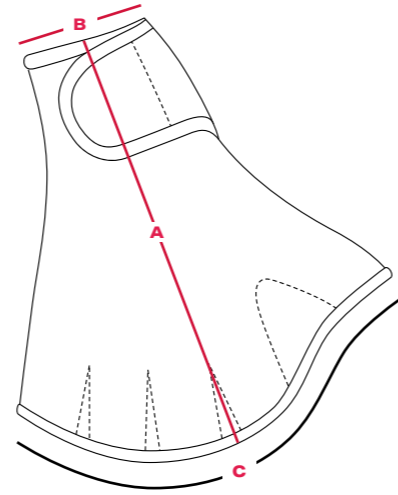


>>> **SA2230171** <<<
BLACK & BRIGHT YELLOW
S/M/L

FEATURES:

- Neoprene construction: comfort and flexibility
- Webbed fingers: low impact resistance
- Help build upper body strength
- Hook & loop wrist closure: perfect fit
- Quick drying
- Reinforced stitches

		S	M	L	TOL +/-
A	HEIGHT	21.5	22.5	23.5	1
B	BOTTOM WIDTH	5.5	6	6.5	0.5
C	TOP WIDTH	22.5	23	26	1



SWIMBUOY

OPEN WATER TOWING BUOY



FEATURES:

- 15L Roll up top
- Dry compartment - store your belongings
- Adjustable leash - customized towing length
- Adjustable waist belt - perfect fit
- 2 attachments possible - compatible with Exocet Wetsuit, around the waist or attached to wetsuit backloop



>>> **ST18108115L** <<<



TRI CAP

ADULT SWIM CAP



>>> **SA128EU0109** <<<
BLACK WHITE



>>> **SA128EU7110** <<<
BRIGHT YELLOW GREY

FEATURES:

- Designed for training and competition
- Semi-formed shape
- Durable chlorine-resistant silicone

PLAINCAP

ADULT SWIM CAP



>>> **SA212EU9907** <<<
MULTICOLOR YELLOW



>>> **SA212EU4009** <<<
BLUE WHITE

FEATURES:

- Designed for training and competition
- Durable chlorine-resistant Silicone



>>> **SA212EU0109** <<<
BLACK WHITE



>>> **SA212EU3209** <<<
DARK GREEN WHITE



>>> **SA212EU0901** <<<
WHITE BLACK



>>> **SA212EU0601** <<<
RED BLACK

AQUACOMFORT

ADULT SWIM CAP



>>> **SA216EU0101** <<<
BLACK

FEATURES

- Adjustable, ultra-lightweight and comfortable for the casual aquatic enthusiast
- Adjustable headband
- Ultra lightweight, quick-drying and durable
- 90% Polyester, 10% Rubber



AQUASPHERE

